

● MINERAL ● AGGREGATES ● IN ONTARIO

Statistical Update

1 9 9 9

Prepared by:



**THE ONTARIO AGGREGATE
RESOURCES CORPORATION**

MINERAL AGGREGATES IN ONTARIO

PRODUCTION STATISTICS

1999

Prepared by

The Ontario Aggregate Resources Corporation

TABLE OF CONTENTS

Overview	1
Management of Ontario's Mineral Aggregate Resources	1
Role of the Ministry of Natural Resources	2
Aggregate Production	4

TABLES AND GRAPHS

1. Aggregate Production in Ontario 1987-1999	5
2. Licence and Wayside Permit Production by Lower Tier Municipality	6
3. Licence and Wayside Permit Production by Upper Tier Municipality	13
4. The Top 10 Producing Municipalities	14
5. Number and Type of Aggregate Licences	15
6. Licenced Aggregate Production by Commodity Type (MNR Districts).....	16
7. Aggregate Permit Production by Commodity Type (MNR Districts)	17
8. Aggregate Permit & Licence Production (CPCA Geographic Areas)	18
9. Rehabilitation of Licenced Aggregate Sites	19
10. Number and Type of Aggregate Permits.....	20

APPENDICES

- A. Glossary of Terms
- B. Historical Designation of Private Land under the Pits and Quarries Control Act and the Aggregate Resources Act
- C. CPCA Geographic Areas
- D. Map of Areas Designated under the Aggregate Resources Act
- E. Aggregate Officers of Ontario Map

Additional copies of this report may be obtained at a cost of \$5.00 each to cover preparation and postage from:

The Ontario Aggregate Resources Corporation
1001 Champlain Avenue, Suite 103
Burlington, ON L7L 5Z4
or telephone (905) 319-7424
or fax (905) 319-7423

Cette publication spécialisée n'est disponible qu'en anglais

For internal use only.

MINERAL AGGREGATES IN ONTARIO

Overview

Mineral aggregate is an indispensable commodity to the infrastructure of our modern 'built environment'. High quality aggregate is a key ingredient in the production of ready-mixed concrete, manufactured concrete products of all types (block, brick, precast, etc.), asphalt pavements and sub-surface fill which is so important in providing drainage and load bearing base for structures. Aggregates literally provide the basis for a \$30 billion construction industry that employs over 270,000 people in Ontario. The aggregate industry employs an estimated 7,000 people directly and some 34,000 people indirectly in services such as transportation and equipment.

In 1999, this basic non-renewable resource was supplied from 2,807 licensed aggregate sites on private land in designated parts of the Province and 2,909 permitted sites on Crown land. It is estimated that over 50% of all aggregate produced in the Province is sold to public authorities for the construction and maintenance of the public infrastructure such as roads, bridges, etc.

Management of Ontario's Mineral Aggregate Resources

At the Provincial level, the management of Ontario's aggregate resources is the responsibility of the Ministry of Natural Resources (MNR). In 1997, in an effort to better focus resources on the delivery of core programs, the MNR took steps to build a partnership with private industry to manage certain administrative functions. Accordingly, subsections 6.1 (1) and 6.1 (3) of the *Aggregate Resources Act*, R.S.O. 1990, Chap. A.8, as amended (the "Act"), gave the Minister the power to create the Aggregate Resources Trust (the "Trust") and appoint a trustee to look after its affairs. An indenture signed in June of 1997 between the Aggregate Producers' Association of Ontario (APAO) and the MNR established the Aggregate Resources Trust and appointed The Ontario Aggregate Resources Corporation (TOARC) to act as trustee.

The Trust Purposes include:

1. The rehabilitation of land for which a Licence or Permit has been revoked and for which final rehabilitation has not been completed;
2. The rehabilitation of abandoned pits and quarries, including surveys and studies respecting their location and condition;
3. Research on aggregate resources management, including rehabilitation;
4. Payments to the Crown in right of Ontario and to regional municipalities, counties and local municipalities in accordance with regulations made pursuant to the Act;
5. The management of the Abandoned Pits and Quarries Rehabilitation Fund;
6. Such other purposes as may be provided for by or pursuant to Paragraph 6.1(2) 5 of the Act.

In August of 1999, Addendum 1 to the Original Trust Indenture was signed to expand the Trust Purposes to include:

- (a) The education and training of persons engaged in or interested in the management of the aggregate resources of Ontario, the operation of pits or quarries, or the rehabilitation of land from which aggregate has been excavated;
- (b) The gathering, publishing and dissemination of information relating to the management of the aggregate resources of Ontario, the control and regulation of aggregate operations and the rehabilitation of land from which aggregate has been excavated.

TOARC is owned by the APAO as the single shareholder, but is directed by a multi-stakeholder board of directors. The seven-member Board is composed of APAO directors and representatives from environmental groups, municipalities and non-APAO member aggregate producers. TOARC is arms-length from APAO in terms of separate office facilities and management staff. TOARC as the ARA trustee is responsible to the Minister of Natural Resources to fulfill the Trust purposes as outlined in Bill 52. The MNR maintains a presence on the Board with an ex officio representative.

Since its inception in 1997, TOARC has focused upon developing systems for the efficient collection and disbursement of aggregate resource charges, the rehabilitation of abandoned pits and quarries through the MAAP program, the creation of an inventory of sites where licences have been revoked and the general management of the Trust assets.

Role of the Ministry of Natural Resources

While the MNR has developed certain external partnerships for the delivery of portions of their Aggregate Resources Program, their mission remains:

- To protect the provincial interest in aggregate resources and develop, maintain and enforce appropriate technical standards.
- To provide leadership in the development of partnerships with key stakeholders for the effective management of aggregate resources to benefit the people of Ontario.

With the guidance of the mission statements, a number of program objectives have been created which drive MNR's daily business practices. These program objectives include:

- Promote exploration and ensure availability through the conservation and orderly development of aggregate resources.
- Ensure that aggregate resources are developed with a high standard of environmental protection and public safety.

- Upgrade and maintain current information databases essential for sound technical and scientific decisions.
- Ensure fair revenue from the production of Crown resources.
- Ensure industry compliance with technical standards.
- Train staff and external clients in skills and knowledge essential for the effective delivery of the Aggregate Resources Program.

The continued business approach for the Aggregate Resources Program is based on the following principles:

- The core business of the program is:
 - Standards and policy development
 - Technical approvals
 - Ensuring compliance with standards
- Private industry clients assume responsibility and accountability for:
 - Compliance reporting
 - Financial management
 - Operations

Regional technical committees have been established that provide continuous feedback and solutions to technical issues in the delivery of the Aggregate Resources Program. The Non-Renewable Resources Section provides coordination and leadership to these committees.

The delegation of authority policy approved in July of 1998 continues. The objective of this policy is to delegate Ministerial authority to the level that provides the best efficiencies and customer service. Standing committees with the industry continue to encourage ongoing communication and customer service.

Core program staff responsible for the standards and policy development, program design and program coordination, evaluation and monitoring are part of the Non Renewable Resources Section, Lands and Natural Heritage Branch, Natural Resource Management Division. The districts that have either Aggregate Resources Officers or Aggregate Technicians deliver this program. The specialists and technicians, who are designated inspectors, are the core staff responsible for the acceptance of applications and are leads when dealing with compliance. These inspectors often have responsibility beyond the administrative boundaries of their districts. Also, at the district level, reporting to the Compliance Supervisor, Conservation Officers take an active role in enforcement actions under the Aggregate Resources Act.

In 1997, certain responsibilities with respect to the issuing and administration of permits and wayside permits were delegated to the Ontario Ministry of Transportation (MTO), specific to MTO contracts and needs.

Aggregate Production

The production of mineral aggregates in 1999 totaled approximately 157 million tonnes, up 7.5% from the previous year. Production from licensed operations increased by 7 million tonnes in 1999 to 131 million tonnes. Production from wayside pits was down while production from aggregate permits on Crown Land increased by approximately 2 million tonnes compared to 1998.

Table 1

AGGREGATE PRODUCTION IN ONTARIO - 1987 - 1999
(rounded to nearest million tonnes)

	1987	1988	1989	1990	1991	1992	1993	1994	1995	1996	1997	1998	1999
Licences	149	154	154	135	107	101	105	113	109	114	124	124	131
Wayside Permits*	5	5	4	3	2	2	2	2	2	2	1	2	1
Aggregate Permits	18	24	25	11	14	13	12	10	9	9	8	9	11
Category 14 (Forest Industry)	-	-	-	-	-	-	-	-	-	-	-	-	2
Private Land Non-Designated (estimated)	13	14	14	12	12	12	12	11	10	11	11	11	12
ONTARIO TOTAL	185	197	197	161	135	128	131	136	130	136	144	146	157

*Wayside Permit production is reported as the total applied tonnage of all permits issued, adjusted where actual tonnages for completed contracts are known.

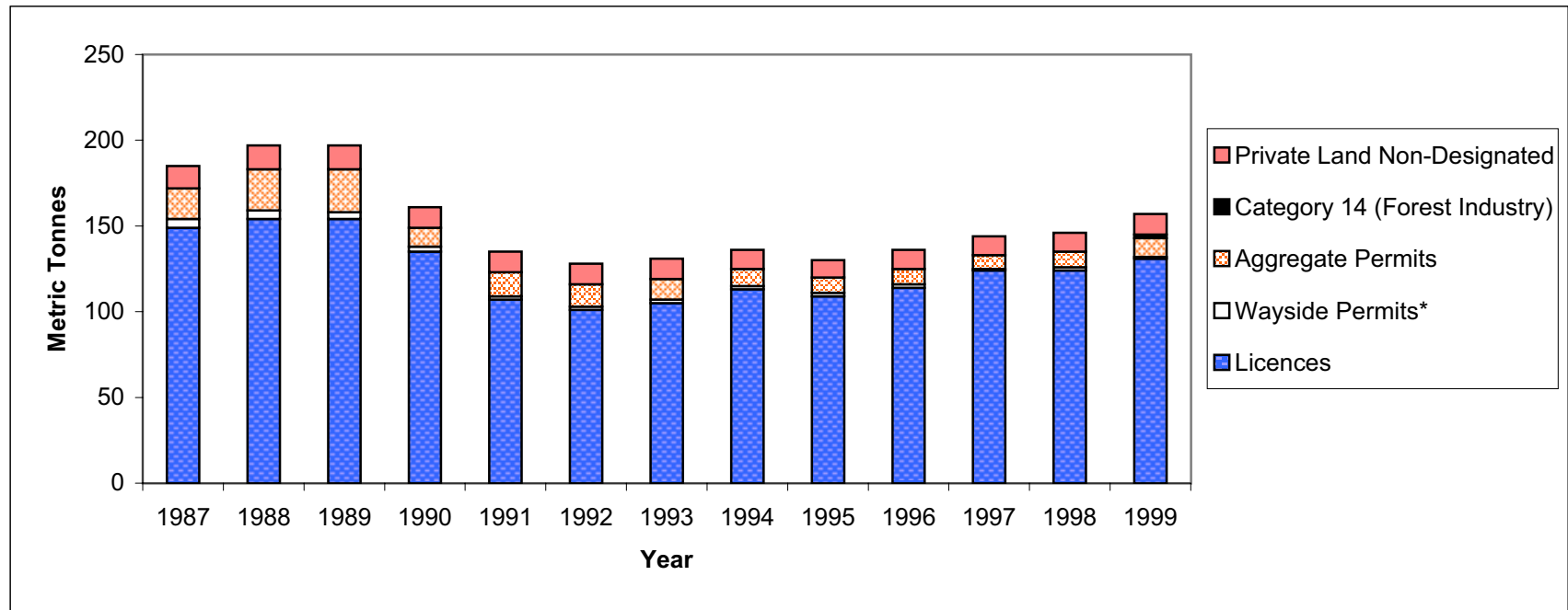


Table 2

**LICENCE AND WAYSIDE PERMIT PRODUCTION
BY LOWER TIER MUNICIPALITY**
(Reported in Metric Tonnes)

Municipality	Licences	Wayside Permits	Total
Algoma District			
Algoma District, Unorganized	46,801.60		46,801.60
Hilton Tp	36,312.00		36,312.00
Jocelyn Tp	30,706.84		30,706.84
Johnson/St. Joseph/Tarbutt & Tarbutt Add'l Tp	35,697.20		35,697.20
Laird Tp	3,309.20		3,309.20
Macdonald, Meredith & Aberdeen Add'l	2,695.64		2,695.64
Sault Ste. Marie, City of	636,324.61		636,324.61
Sub-Total	791,847.09	0.00	791,847.09
Brant			
Brant, County of/Brantford, City of	1,472,112.90		1,472,112.90
Sub-Total	1,472,112.90	0.00	1,472,112.90
Bruce			
Arran-Elderslie, Municipality of	153,558.04		153,558.04
Brockton, Municipality of	197,298.80		197,298.80
Huron-Kinloss Tp	194,303.48		194,303.48
Kincardine, Municipality of	114,330.21		114,330.21
Northern Bruce Peninsula, Municipality of	143,642.14		143,642.14
Saugeen Shores, Town of	213,086.92		213,086.92
South Bruce, Municipality of	304,491.80		304,491.80
South Bruce Peninsula, Town of	205,192.51		205,192.51
Sub-Total	1,525,903.90	0.00	1,525,903.90
Chatham-Kent			
Chatham-Kent, Municipality of	464,272.33		464,272.33
Sub-Total	464,272.33	0.00	464,272.33
Dufferin			
Amaranth Tp	90,894.32		90,894.32
East Garafraxa Tp	720,376.12		720,376.12
East Luther Grand Valley Tp	82,782.80		82,782.80
Melancthon/Mono Tp	654,983.03		654,983.03
Mulmur Tp	558,375.62		558,375.62
Sub-Total	2,107,411.89	0.00	2,107,411.89
Durham			
Brock Tp	1,515,678.95		1,515,678.95
Clarington, Municipality of	3,756,306.42		3,756,306.42
Clark Tp		70,000.00	70,000.00
Oshawa, City of/Whitby, Town of/Scugog Tp	438,533.38		438,533.38
Uxbridge Tp	3,392,643.31		3,392,643.31
Sub-Total	9,103,162.06	70,000.00	9,173,162.06
Elgin			
Bayham, Municipality of/Malahide Tp	61,825.74		61,825.74
Central Elgin, Municipality of	418,580.78		418,580.78
West Elgin, Municipality of	159,003.03		159,003.03
Sub-Total	639,409.55	0.00	639,409.55

Table 2

**LICENCE AND WAYSIDE PERMIT PRODUCTION
BY LOWER TIER MUNICIPALITY**
(Reported in Metric Tonnes)

Municipality	Licences	Wayside Permits	Total
Essex			
Amherstburg, Town of/Pelee Tp	1,057,236.03		1,057,236.03
Kingsville, Town of/Windsor, City of	315,797.40		315,797.40
Leamington, Municipality of	529,952.11		529,952.11
Sub-Total	1,902,985.54	0.00	1,902,985.54
Frontenac			
Frontenac Islands Tp	22,222.12		22,222.12
Kingston, City of	1,002,320.93		1,002,320.93
South Frontenac Tp	284,188.32		284,188.32
Sub-Total	1,308,731.37	0.00	1,308,731.37
Grey			
Artemesia Tp	211,274.55		211,274.55
Bentinck Tp	231,899.88	15,000.00	246,899.88
Blue Mountains, Town of	216,290.76		216,290.76
Derby Tp	69,651.60	96,634.00	166,285.60
Egremont Tp	159,306.32		159,306.32
Euphrasia/St. Vincent/Sarawak Tp	93,385.61	150,000.00	243,385.61
Glenelg Tp	125,672.12		125,672.12
Holland Tp	87,705.85		87,705.85
Keppel Tp	469,642.39	6,360.00	476,002.39
Normanby Tp	88,220.75		88,220.75
Osprey Tp	147,572.94		147,572.94
Proton Tp	130,140.59		130,140.59
Sullivan Tp	272,132.53		272,132.53
Sydenham Tp	268,366.30		268,366.30
Sub-Total	2,571,262.19	267,994.00	2,839,256.19
Haldimand-Norfolk			
Delhi Tp/Dunnville, Town of	224,992.05		224,992.05
Haldimand/Simcoe, Town of	1,467,683.00		1,467,683.00
Nanticoke, City of	279,774.99		279,774.99
Sub-Total	1,972,450.04	0.00	1,972,450.04
Halton			
Burlington, City of/Halton Hills, Town of	6,135,761.06		6,135,761.06
Milton, Town of	7,679,491.44		7,679,491.44
Sub-Total	13,815,252.50	0.00	13,815,252.50
Hamilton-Wentworth			
Flamborough, Town of/Stoney Creek, City of	4,633,300.59		4,633,300.59
Sub-Total	4,633,300.59	0.00	4,633,300.59

Table 2

**LICENCE AND WAYSIDE PERMIT PRODUCTION
BY LOWER TIER MUNICIPALITY**
(Reported in Metric Tonnes)

Municipality	Licences	Wayside Permits	Total
Hastings			
Belleville, City of	344,878.80		344,878.80
Centre Hastings, Municipality of	33,895.83		33,895.83
Madoc Tp	680,743.05		680,743.05
Marmora & Lake Tp	15,156.20		15,156.20
Quinte West, City of	688,744.44		688,744.44
Stirling-Rawdon/Tyendinaga Tp	352,134.71		352,134.71
Tweed, Municipality of	79,519.06		79,519.06
Sub-Total	2,195,072.09	0.00	2,195,072.09
Huron			
Ashfield Tp	105,240.30		105,240.30
Colborne Tp	306,650.27		306,650.27
East Wawanosh Tp	312,753.20		312,753.20
Grey Tp	379,530.96		379,530.96
Goderich Tp	393,990.94		393,990.94
Hay/Stanley/Turnberry Tp	53,200.16		53,200.16
Howick Tp	261,897.50		261,897.50
Hullett Tp	112,149.99		112,149.99
McKillop Tp	320,544.66		320,544.66
Morris Tp	147,217.04		147,217.04
Tuckersmith Tp	72,035.00		72,035.00
Usborne Tp	110,366.40		110,366.40
West Wawanosh Tp	210,613.47		210,613.47
Sub-Total	2,786,189.89	0.00	2,786,189.89
Lambton			
Bosanquet, Town of	75,151.58		75,151.58
Enniskillen/Plympton/Warwick Tp	521,330.64		521,330.64
Sub-Total	596,482.22	0.00	596,482.22
Lanark			
Bathurst, Burgess, Sherbrooke Tp	48,031.08		48,031.08
Beckwith Tp	99,357.24		99,357.24
Drummond-North Elmsley Tp	193,717.11		193,717.11
Lanark Highlands Tp	1,129,967.97	15,340.00	1,145,307.97
Mississippi Mills, Town of	3,982.00		3,982.00
Montague Tp	57,043.91		57,043.91
Sub-Total	1,532,099.31	15,340.00	1,547,439.31
Leeds & Grenville			
Augusta Tp	142,212.69		142,212.69
Edwardsburgh Tp	337,510.15		337,510.15
Elizabethtown Tp	583,196.93		583,196.93
Front of Escott/Front of Yonge/Rear of Yonge & Escotte/Kitley Tp	136,462.73		136,462.73
Front of Leeds & Lansdowne Tp	33,201.13		33,201.13
Merrickville-Wolford, Village of	135,167.30		135,167.30
North Grenville Tp	419,303.76		419,303.76
Rear of Leeds & Lansdowne Tp	395,473.70		395,473.70
Rideau Lakes Tp	62,805.12		62,805.12
Sub-Total	2,245,333.51	0.00	2,245,333.51

Table 2

**LICENCE AND WAYSIDE PERMIT PRODUCTION
BY LOWER TIER MUNICIPALITY**
(Reported in Metric Tonnes)

Municipality	Licences	Wayside Permits	Total
<i>Lennox & Addington</i>			
Greater Napanee, Town of	1,400,007.02		1,400,007.02
Loyalist/Stone Mills Tp	304,594.97		304,594.97
Sub-Total	1,704,601.99	0.00	1,704,601.99
<i>Middlesex</i>			
Adelaide/East Williams/Lucan Biddulph Tp	56,677.22		56,677.22
Caradoc Tp	21,765.00		21,765.00
London, City of	2,478,829.09		2,478,829.09
McGillivray Tp	34,335.60		34,335.60
Middlesex Centre Tp	994,831.84		994,831.84
North Dorchester Tp	918,148.21		918,148.21
West Nissouri Tp	1,033,237.17		1,033,237.17
West Williams Tp	85,857.05		85,857.05
Sub-Total	5,623,681.18	0.00	5,623,681.18
<i>Niagara</i>			
Fort Erie/Port Colborne, City of/Wainfleet Tp	1,371,337.20		1,371,337.20
Lincoln/Niagara-on-the-Lake/Pelham, Town of	1,962,994.29		1,962,994.29
Niagara Falls, City of	996,541.83		996,541.83
Sub-Total	4,330,873.32	0.00	4,330,873.32
<i>Northumberland</i>			
Alnwick/Hope Tp	82,187.86		82,187.86
Brighton Tp	391,090.80		391,090.80
Campbellford-Seymour, Municipality of	107,126.70		107,126.70
Cramahe Tp	2,192,725.72		2,192,725.72
Haldimand Tp	310,946.14	142,711.00	453,657.14
Hamilton Tp	192,313.39		192,313.39
Percy Tp	149,060.05		149,060.05
Sub-Total	3,425,450.66	142,711.00	3,568,161.66
<i>Ottawa-Carleton</i>			
Cumberland Tp	424,052.01		424,052.01
Gloucester, City of	2,386,207.68		2,386,207.68
Goulbourn Tp	677,881.53		677,881.53
Nepean, City of	2,226,832.68		2,226,832.68
Osgoode Tp	489,390.60		489,390.60
Rideau Tp	4,519.00		4,519.00
West Carleton Tp	1,899,531.11		1,899,531.11
Sub-Total	8,108,414.61	0.00	8,108,414.61
<i>Oxford</i>			
Blandford-Blenheim Tp	226,358.13		226,358.13
East Zorra-Tavistock Tp/Woodstock, City of	67,919.14		67,919.14
Norwich/South-West Oxford Tp	764,485.91		764,485.91
Zorra Tp	4,068,007.89		4,068,007.89
Sub-Total	5,126,771.07	0.00	5,126,771.07

Table 2

**LICENCE AND WAYSIDE PERMIT PRODUCTION
BY LOWER TIER MUNICIPALITY**
(Reported in Metric Tonnes)

Municipality	Licences	Wayside Permits	Total
Peel			
Brampton/Mississauga, City of	296,777.09		296,777.09
Caledon, Town of	4,207,954.74		4,207,954.74
Sub-Total	4,504,731.83	0.00	4,504,731.83
Perth			
North Perth, Town of/St. Marys, Separated Town of	87,698.35		87,698.35
Perth East Tp	233,734.30		233,734.30
Perth South Tp	1,178,250.31		1,178,250.31
West Perth Tp	54,917.50		54,917.50
Sub-Total	1,554,600.46	0.00	1,554,600.46
Peterborough			
Asphodel-Norwood Tp	68,953.72		68,953.72
Douro-Dummer Tp	420,286.12		420,286.12
Galway-Cavendish-Harvey Tp	147,779.83		147,779.83
Havelock-Belmont-Methuen Tp	256,031.61		256,031.61
Cavan-Millbrook-North Monaghan Tp	93,229.66		93,229.66
Otonabee-South Monaghan Tp	469,111.60		469,111.60
Smith-Ennismore Tp	380,052.88		380,052.88
Sub-Total	1,835,445.42	0.00	1,835,445.42
Prescott & Russell			
Alfred & Plantagenet Tp	164,540.50		164,540.50
Champlain Tp	317,455.56		317,455.56
Clarence-Rockland, City of	221,880.03		221,880.03
East Hawkesbury Tp	33,611.36		33,611.36
The Nation, Municipality of	231,148.78		231,148.78
Russell Tp	241,189.69		241,189.69
Sub-Total	1,209,825.92	0.00	1,209,825.92
Prince Edward Co			
Prince Edward, County of	1,982,541.69		1,982,541.69
Sub-Total	1,982,541.69	0.00	1,982,541.69
Renfrew			
Alice & Fraser Tp	414,383.54		414,383.54
Bagot-Blythfield-Brougham/Stafford & Pembroke Tp	67,199.92		67,199.92
Bromley Tp	119,436.27		119,436.27
Horton Tp	276,960.39		276,960.39
McNab-Braeside Tp	253,521.81		253,521.81
Petawawa, Town of	237,407.35		237,407.35
Ross Tp	24,694.47		24,694.47
Westmeath Tp	92,483.30		92,483.30
Sub-Total	1,486,087.05	0.00	1,486,087.05

Table 2

**LICENCE AND WAYSIDE PERMIT PRODUCTION
BY LOWER TIER MUNICIPALITY**
(Reported in Metric Tonnes)

Municipality	Licences	Wayside Permits	Total
Simcoe			
Adjala-Tosorontio Tp	572,381.12		572,381.12
Bradford West Gwillimbury/Midland/Wasaga Beach, Town of	302,507.84		302,507.84
Clearview Tp	1,481,299.93		1,481,299.93
Essa Tp	86,811.70		86,811.70
Innisfil, Town of	104,409.57		104,409.57
New Tecumseh, Town of	112,560.71		112,560.71
Oro-Medonte Tp	2,041,050.42		2,041,050.42
Ramara Tp	1,636,627.84		1,636,627.84
Severn Tp	1,023,826.50		1,023,826.50
Springwater Tp	1,189,964.17		1,189,964.17
Tay Tp	124,366.09		124,366.09
Tiny Tp	262,518.41		262,518.41
Sub-Total	8,938,324.30	0.00	8,938,324.30
Stormont, Dundas & Glengarry			
North Dundas Tp	560,532.91		560,532.91
North Glengarry Tp	62,523.38		62,523.38
North Stormont Tp	473,235.02		473,235.02
South Dundas Tp	224,908.24		224,908.24
South Glengarry Tp	517,488.44		517,488.44
South Stormont Tp	1,005,452.99		1,005,452.99
Sub-Total	2,844,140.98	0.00	2,844,140.98
Sudbury			
Nickel Centre, Town of	1,205,367.27		1,205,367.27
Onaping Falls, Town of	709,009.32		709,009.32
Rayside-Balfour, Town of/Sudbury, City of	429,320.54		429,320.54
Valley East, City of	146,646.41		146,646.41
Walden, Town of	82,603.12	330,000.00	412,603.12
Sub-Total	2,572,946.66	330,000.00	2,902,946.66
Sudbury District			
Baldwin/Nairn & Hyman Tp	46,837.32		46,837.32
French River, Municipality of	17,134.81		17,134.81
Markstay-Warren/Sables Spanish Rivers, Municipality of	31,875.75		31,875.75
St. Charles, Municipality of	6,131.12		6,131.12
Sudbury District, Unorganized	280,538.22		280,538.22
Sub-Total	382,517.22	0.00	382,517.22

Table 2

**LICENCE AND WAYSIDE PERMIT PRODUCTION
BY LOWER TIER MUNICIPALITY**
(Reported in Metric Tonnes)

Municipality	Licences	Wayside Permits	Total
Victoria			
Bobcaygeon, Village of/Bexley/Langton, Digby & Longford Tp	71,352.22		71,352.22
Carden Tp	1,172,960.23		1,172,960.23
Eldon Tp	87,470.37		87,470.37
Emily Tp	465,130.35		465,130.35
Fenelon Tp	194,913.04		194,913.04
Manvers Tp	3,181,774.64		3,181,774.64
Mariposa Tp	476,539.45		476,539.45
Somerville Tp	237,407.06		237,407.06
Verulam Tp	41,058.36		41,058.36
Sub-Total	5,928,605.72	0.00	5,928,605.72
Waterloo			
Kitchener, City of	1,182,929.00		1,182,929.00
North Dumfries Tp	3,227,841.46		3,227,841.46
Wellesley Tp	1,012,808.25		1,012,808.25
Wilmot Tp	922,118.75		922,118.75
Woolwich Tp	932,449.51		932,449.51
Sub-Total	7,278,146.97	0.00	7,278,146.97
Wellington			
Centre Wellington Tp	857,825.69		857,825.69
Erin, Town of	1,334,470.87		1,334,470.87
Guelph-Eramosa Tp	740,222.90	152,134.00	892,356.90
Mapleton Tp	60,844.84		60,844.84
Minto, Town of	337,218.20		337,218.20
Puslinch Tp	3,909,711.79		3,909,711.79
Wellington North Tp	135,514.85		135,514.85
Sub-Total	7,375,809.14	152,134.00	7,527,943.14
York			
East Gwillimbury, Town of	425,684.09		425,684.09
Georgina, Town of	42,220.24		42,220.24
King Tp/Vaughan, City of	442,440.63		442,440.63
Whitchurch-Stouffville, Town of	1,757,097.00		1,757,097.00
Sub-Total	2,667,441.96	0.00	2,667,441.96
GRAND TOTAL	130,544,237.12	978,179.00	131,522,416.12

Table 3

**LICENCE AND WAYSIDE PRODUCTION
BY UPPER TIER MUNICIPALITY
(Million Tonnes)**

Municipality	1991	1992	1993	1994	1995	1996	1997	1998	1999
Algoma, District of	0.5	0.5	0.4	0.5	0.5	0.6	0.6	0.6	0.8
Brant Co.	1.9	1.4	1.1	1.3	1.6	1.7	2.1	1.5	1.5
Bruce Co.	2.5	2	2	1.8	1.5	1.2	1.3	1.6	1.5
Chatham-Kent, R. M. of	0.4	0.3	0.4	0.5	0.5	0.4	0.5	0.4	0.5
Dufferin Co.	1.6	1.1	1.3	1.6	1.4	1.5	1.5	1.8	2.1
Durham, R. M. of	5.8	5.7	6.6	7.1	7.2	7.6	8.7	7.8	9.2
Elgin Co.	0.6	0.5	0.6	0.5	0.4	0.5	0.7	0.4	0.6
Essex Co.	2.5	2.7	2.8	2.7	2.4	2.2	2.7	2	1.9
Frontenac, Management Board	1.6	1.6	1.4	1.5	1.2	1.6	1.5	1.2	1.3
Grey Co.	2.7	2.6	2.4	2.7	2.4	2	2.1	2.1	2.8
Haldimand-Norfolk, R. M. of	1.7	1.7	1.8	1.9	1.9	1.7	2.1	1.8	2
Halton, R. M. of	7.5	7	9.2	9.7	10.7	12.3	14.4	13.4	13.8
Hamilton-Wentworth, R. M. of	3.7	3.6	3.4	3.9	4	4	5.2	4.7	4.6
Hastings Co.	1.4	1.6	1.5	1.2	1.4	1.6	2	1.9	2.2
Huron Co.	3.1	2.9	2.1	2.9	2.8	2.8	2.4	2.6	2.8
Lambton Co.	0.5	0.5	0.4	0.6	0.6	0.4	0.5	0.6	0.6
Lanark Co.	1.1	1.2	0.9	1.1	1.3	1.2	1.2	1.3	1.5
Leeds & Grenville Co.'s	2.1	2	2	2.4	2.3	2	2.1	4.2	2.2
Lennox & Addington Co.	ND	1.4	1.9	1.7	2	1.8	1.7	1.9	1.7
Middlesex Co.	4.5	4.4	5	4.9	4.5	4.5	5.3	6.1	5.6
Niagara, R. M. of	4	3.3	3.5	4.1	3.6	4.7	4.9	4.6	4.3
Northumberland Co.	3.1	3.3	3	3	2.6	3	3.2	3.2	3.6
Ottawa-Carleton, R. M. of	8.6	8.7	9.2	9.3	8.4	6.1	6.7	7.1	8.1
Oxford Co.	4	4.5	4.9	4.6	5	4.6	5.3	4.9	5.1
Peel, R. M. of	3.3	2.7	2.9	3.1	3.7	3.8	4.3	4.2	4.5
Perth Co.	1.6	1.3	1.4	1.7	1.6	1.9	1.7	1.7	1.6
Peterborough Co.	2.5	2.4	2.6	2.2	1.8	1.8	1.8	1.8	1.8
Prescott & Russell Co.'s	1.4	1.5	1.7	1.9	1.3	1.2	1.4	1.1	1.2
Prince Edward Co.	1.8	1.7	1.5	1.9	2.2	1.8	2.1	2	2
Renfrew Co.	ND	ND	ND	1.1	1.3	1.5	1.2	1.3	1.5
Simcoe Co.	8.1	8	6.9	6.2	6.8	7.4	7.6	9	9
Stormont, Dundas & Glengarry Co.'s	2.5	2.4	2.6	2.6	2.3	2.1	2.4	2.4	2.8
Sudbury, District of	0.4	0.5	0.5	0.5	0.3	0.3	0.2	0.2	0.4
Sudbury, R. M. of	2.9	2.7	2.2	2.9	2.9	2.7	2.5	2.3	2.9
Victoria Co.	5.6	4.7	5.1	5.4	4.9	6	6.5	6.6	6
Waterloo, R. M. of	5.1	4.1	4.7	5.8	5.8	5.8	5.6	5.8	7.3
Wellington Co.	5.6	4.9	5.5	5.6	4.9	6	6.4	6.9	7.5
York, R. M. of	2.6	1.6	1.4	1.9	2.2	2	2.6	2.2	2.7
TOTAL	108.8	103.0	106.8	114.3	112.2	114.3	125.0	125.2	131.5

ND: Not Designated under the Aggregate Resources Act.

Table 4

**LICENCE PRODUCTION IN 1999
THE TOP TEN PRODUCING MUNICIPALITIES
(Rounded to nearest million tonnes)**

Municipality	County/Region	1999 Production	Production					
			1998	1997	1996	1995	1994	
1	Town of Milton	Halton Region	7.7	7.9	9.6	8.6	5.6	3.6
2	Town of Halton Hills	Halton Region	4.4	3.3	3.2	2.4	3.9	5.6
3	Town of Caledon	Peel Region	4.2	3.9	4.0	3.5	3.6	3.0
4	Zorra Township	Oxford County	4.1	3.8	3.8	3.3	3.6	3.1
5	Puslinch Township	Wellington County	3.9	3.8	3.5	3.2	2.0	2.7
6	Town of Flamborough	Hamilton-Wentworth	3.9	4.1	4.2	3.2	3.3	3.1
7	Municipality of Clarington	Durham	3.8	3.0	3.9	3.1	3.0	2.9
8	Township of Uxbridge	Durham	3.4	3.2	3.1	3.3	3.1	2.9
9	Township of North Dumfries	Waterloo, R. M. of	3.2	2.5	2.4	2.9	2.5	2.4
10	Township of Manvers	Victoria County	3.2	3.7	3.7	3.6	2.8	3.1
Total			41.8	39.2	41.4	37.1	33.4	32.4

Note: Municipalities are ranked in order of their licenced production for 1999

Table 5

**NUMBER AND TYPE OF AGGREGATE LICENCES
AS OF DECEMBER 31, 2000**

District	No. of Licences	Category		Type of Operation		
		Class A	Class B	Pit	Quarry	Pit & Quarry
Aurora (GTA)	183	154	29	166	17	0
Aylmer	324	227	97	307	11	6
Bancroft	37	13	24	18	14	5
Guelph (Cambridge)	469	376	93	436	30	3
Kemptville	509	259	250	372	116	21
Midhurst	474	341	133	437	34	3
Pembroke	116	51	65	104	6	6
Peterborough (Tweed)	502	269	233	404	85	13
Sault Ste. Marie	68	31	37	62	1	5
Sudbury	125	87	38	105	5	15
TOTAL	2807	1808	999	2411	319	77

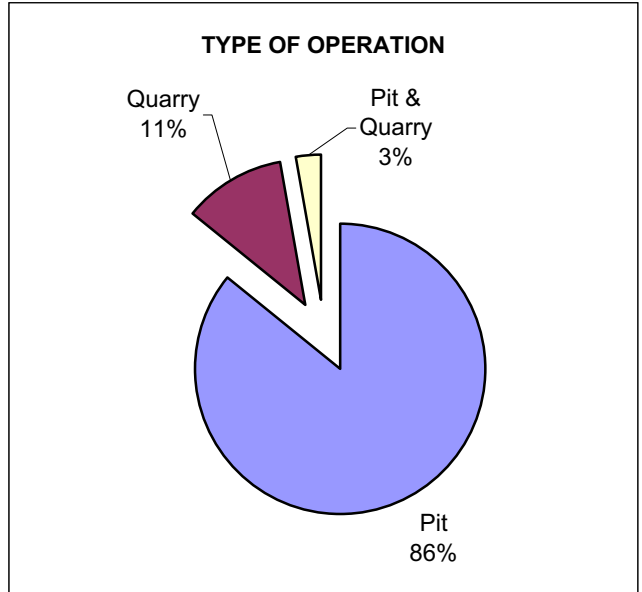
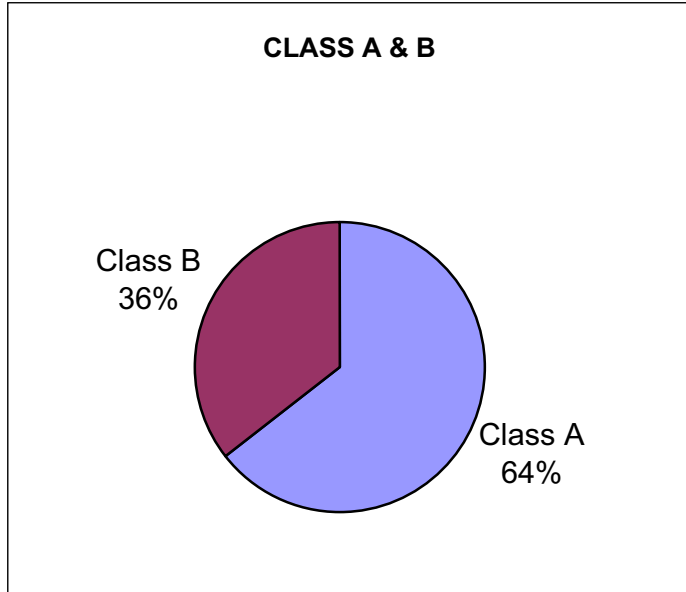


Table 6

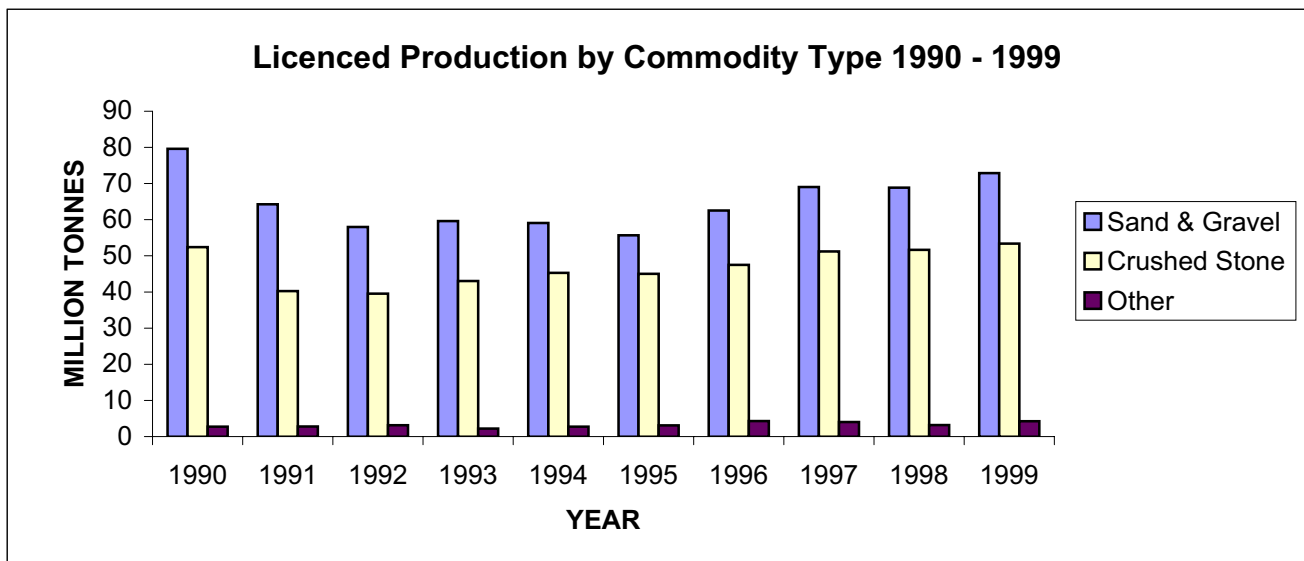
**1999 LICENCED AGGREGATE PRODUCTION
BY COMMODITY TYPE
(Reported by MNR District)**

District	Total	Sand & Gravel	Crushed Stone	Clay/ Shale	Other Stone
Aurora (GTA)	30,090,588.35	14,559,257.29	15,023,080.00	504,157.86	4,093.20
Aylmer	14,788,491.81	10,681,373.80	4,104,461.70	1,156.31	1,500.00
Bancroft	1,593,128.91	118,085.54	1,464,966.11	665.00	9,412.26
Guelph (Cambridge)	31,051,376.19	19,781,680.42	10,228,719.39	992,862.38	48,114.00
Kemptville	15,939,814.33	4,358,986.49	10,575,933.83	257,189.17	747,704.84
Midhurst	15,060,119.48	10,693,895.04	4,230,652.00	22,223.95	113,348.49
Pembroke	1,486,087.05	1,264,443.83	221,621.46	0.00	21.76
Peterborough	16,787,320.03	8,529,039.10	7,058,034.73	33,609.71	1,166,636.49
Sault Ste. Marie	791,847.09	729,479.35	34,547.37	0.00	27,820.37
Sudbury	2,955,463.88	2,161,869.94	461,265.24	22,135.22	310,193.48
TOTAL	130,544,237.12	72,878,110.80	53,403,281.83	1,833,999.60	2,428,844.89

Note: Totals may not equal due to rounding

Other Stone includes building stone, industrial stone, dimensional stone

Reported in metric tonnes



**Yearly Production for Aggregate Licences
(in Million Tonnes)**

	Sand & Gravel	Crushed Stone	Other
1990	79.62	52.42	2.74
1991	64.24	40.26	2.78
1992	57.99	39.52	3.15
1993	59.62	43.04	2.19
1994	59.07	45.28	2.76
1995	55.70	45.01	3.09
1996	62.52	47.48	4.27
1997	69.05	51.23	4.01
1998	68.84	51.64	3.20
1999	72.87	53.40	4.26

Table 7

**1999 AGGREGATE PERMIT PRODUCTION
BY COMMODITY TYPE
(Reported by MNR District)**

Region/District	Total Production	Sand & Gravel	Crushed Stone	Clay/Shale	Other Stone
NORTHEAST					
Chapleau	226,377.59	226,377.59	-	-	-
Cochrane	556,145.64	481,890.64	73,847.00	-	408.00
Hearst	629,164.91	461,534.41	95,000.00	33,918.00	38,712.50
Kirkland Lake	499,261.38	499,261.38	-	-	-
North Bay	603,274.00	590,549.70	11,787.00	-	937.30
Sault Ste. Marie	389,679.32	375,512.32	-	13,926.00	241.00
Sudbury	160,688.45	152,232.47	4,411.00	382.50	3,662.48
Timmins	227,743.76	194,376.96	-	-	33,366.80
Wawa	1,439,203.42	1,238,800.42	68,102.00	132,301.00	-
Sub-Total	4,731,538.47	4,220,535.89	253,147.00	180,527.50	77,328.08
NORTHWEST					
Dryden	765,759.22	644,407.16	121,094.00	-	258.06
Fort Frances	240,560.63	240,172.63	-	163.00	225.00
Kenora	853,151.66	816,634.66	20,400.00	-	16,117.00
Nipigon	1,414,602.53	1,347,429.83	65,185.00	253.00	1,734.70
Red Lake	284,236.48	280,252.48	-	590.00	3,394.00
Sioux Lookout	344,802.73	344,219.97	-	-	582.76
Thunder Bay	402,580.45	401,700.95	-	-	879.50
Sub-Total	4,305,693.70	4,074,817.68	206,679.00	1,006.00	23,191.02
SOUTHCENTRAL					
Algonquin Park	52,048.00	52,048.00	-	-	-
Aurora (GTA)	0.00	-	-	-	-
Aylmer	620.00	620.00	-	-	-
Bancroft	397,717.95	245,631.36	148,162.00	1,904.00	2,020.59
Guelph (Cambridge)	1,200.00	1,200.00	-	-	-
Kemptville	1,686,595.56	955,669.56	730,926.00	-	-
Midhurst	6,115.00	6,115.00	-	-	-
Parry Sound	197,975.55	168,928.10	28,648.00	-	399.45
Pembroke	52,433.58	52,433.58	-	-	-
Peterborough (Tweed)	0.00	-	-	-	-
Sub-Total	2,394,705.64	1,482,645.60	907,736.00	1,904.00	2,420.04
TOTAL	11,431,937.81	9,777,999.17	1,367,562.00	183,437.50	102,939.14

Note: Amounts shown are in metric tonnes

Table 8

**1999 AGGREGATE PERMIT PRODUCTION
BY COMMODITY TYPE
(Reported by CPCA* Geographic Areas)**

Area	Total	Sand & Gravel	Crushed Stone	Clay/ Shale	Other Stone
Southwest (1)	620	620	0	0	0
Peninsula (2)	1,200	1,200	0	0	0
West Central (3)	6,115	6,115	0	0	0
GTA (4)	0	0	0	0	0
East Central (5)	449,766	297,679	148,162	1,904	2,021
East (6)	1,739,029	1,008,103	730,926	0	0
Northeast (7)	3,100,631	2,775,151	213,693	34,301	77,487
Northwest (8)	6,134,576	5,689,130	274,781	147,233	23,432
TOTAL	11,431,937	9,777,998	1,367,562	183,438	102,939

Note: Totals may not equal due to rounding
 Other Stone includes building stone, industrial stone, dimensional stone
 Amounts shown are in metric tonnes
 *CPCA - Canadian Portland Cement Association

**1999 AGGREGATE LICENCE PRODUCTION
BY COMMODITY TYPE
(Reported by CPCA* Geographic Areas)**

Area	Total	Sand & Gravel	Crushed Stone	Clay/ Shale	Other Stone
Southwest (1)	18,694,392	13,839,198	4,799,386	54,282	1,526
Peninsula (2)	12,408,737	2,354,630	9,117,162	936,945	0
West Central (3)	29,796,858	24,963,122	4,647,285	25,015	161,436
GTA (4)	30,090,588	14,559,257	15,023,080	504,158	4,093
East Central (5)	15,367,116	8,340,305	6,979,043	31,810	15,958
East (6)	20,439,235	5,930,250	12,341,514	259,654	1,907,818
Northeast (7)	2,955,464	2,161,870	461,265	22,135	310,193
Northwest (8)	791,847	729,479	34,547	0	27,820
TOTAL	130,544,237	72,878,111	53,403,282	1,833,999	2,428,845

Note: Totals may not equal due to rounding
 Other Stone includes building stone, industrial stone, dimensional stone
 Amounts shown are in metric tonnes
 *CPCA - Canadian Portland Cement Association

Table 9

**REHABILITATION OF
LICENCED AGGREGATE SITES IN 1999
(Reported by MNR District)**

District	Total No. of Licences	Total Licence Area	Original Disturbed Area	New Disturbed Area	New Rehab. Area	Total Disturbed Area
Aurora (GTA)	183	9,620.69	3,665.08	83.75	115.46	3,633.37
Aylmer	324	8,609.59	3,135.31	128.22	111.01	3,152.52
Bancroft	37	1,482.78	233.87	23.86	3.60	254.13
Guelph (Cambridge)	469	16,434.32	4,201.56	207.20	133.43	4,275.32
Kemptville	509	14,102.02	3,639.35	116.30	55.23	3,700.42
Midhurst	474	13,510.07	3,162.28	116.41	76.94	3,201.76
Pembroke	116	3,128.97	378.69	13.98	7.36	385.31
Peterborough (Tweed)	502	13,497.84	3,211.72	99.08	51.76	3,259.03
Sault Ste. Marie	68	2,935.46	295.33	10.14	6.59	298.88
Sudbury	125	9,373.23	794.92	20.44	24.42	790.94
TOTAL	2,807	92,694.97	22,718.11	819.38	585.81	22,951.68

Note: Areas shown are in hectares

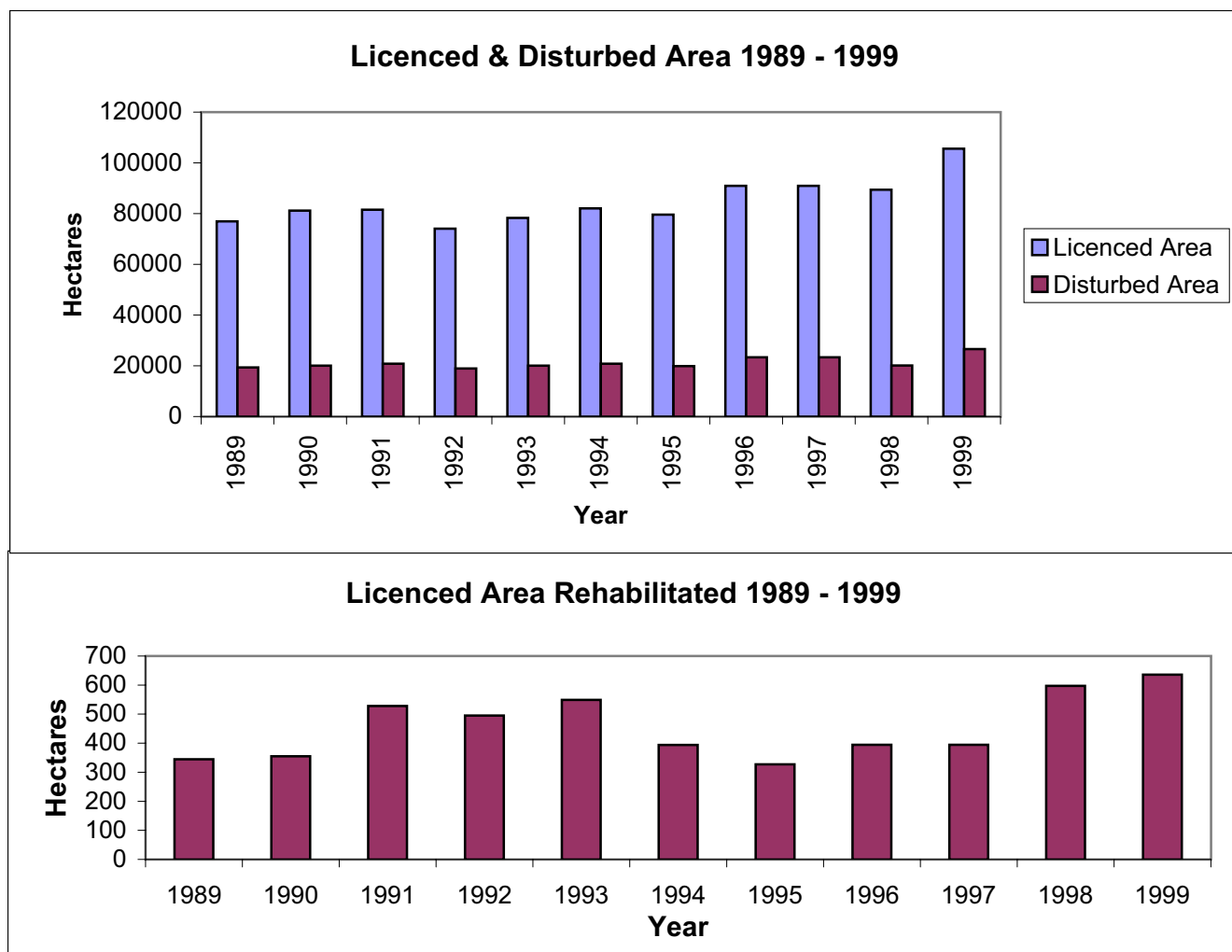


Table 10

**NUMBER AND TYPE OF AGGREGATE PERMITS
(Reported by MNR District)**

Region/District	Total Hectarage	Total No. of Permits	Pit	Quarry	Pit & Quarry	Underwater
NORTHEAST						
Chapleau	490.15	183	183	0	0	0
Cochrane	2,188.77	111	99	7	5	0
Hearst	1,826.35	154	137	16	1	0
Kirkland Lake	486.80	95	94	1	0	0
North Bay	1,785.15	204	190	12	2	0
Sault Ste. Marie	533.80	114	111	1	2	0
Sudbury	3,472.59	180	157	16	7	0
Timmins	1,375.04	149	145	4	0	0
Wawa	1,894.17	263	262	1	0	0
Sub-Total	14,052.82	1,453	1,378	58	17	0
NORTHWEST						
Dryden	1,034.97	160	156	3	1	0
Fort Frances	1,666.95	252	245	4	3	0
Kenora	1,957.33	184	167	14	3	0
Nipigon	2,841.54	301	284	13	4	0
Red Lake	664.90	82	82	0	0	0
Sioux Lookout	719.85	63	63	0	0	0
Thunder Bay	1,170.74	148	137	11	0	0
Sub-Total	10,056.28	1,190	1,134	45	11	0
SOUTHCENTRAL						
Algonquin Park	11.72	20	20	0	0	0
Aurora (GTA)	0.00	0	0	0	0	0
Aylmer	0.10	1	0	0	0	1
Bancroft	464.31	85	79	6	0	0
Guelph (Cambridge)	620.50	2	0	0	0	2
Kemptville	274.58	7	4	2	0	1
Midhurst	9.09	2	1	0	0	1
Parry Sound	485.38	107	83	12	2	10
Pembroke	98.96	42	41	1	0	0
Peterborough (Tweed)	0.00	0	0	0	0	0
Sub-Total	1,964.64	266	228	21	2	15
TOTAL	26,073.74	2,909	2,740	124	30	15

APPENDIX A

GLOSSARY OF TERMS

For actual definitions, please refer to the Aggregate Resources Act.

Active Licence

A licence that has been issued, being transferred, or under suspension at the end of the calendar year.

Aggregate

Includes sand, gravel, limestone, dolostone, crushed stone, rock other than metallic ores, and other prescribed material.

Aggregate Permit

A permit for a pit or quarry issued under the Aggregate Resources Act allowing for the excavation of aggregate that is the property of the Crown, on land where the surface rights are the property of the Crown, or from land under water. There are three types of aggregate permits, they are commercial, public authority and personal.

ALPS

The Aggregate Licence and Permit System (ALPS) is an automated data base that facilitates the management of mineral aggregate production and related information, for individual licences, aggregate permits and wayside permits across the province.

Building Dimension

A slab or block of rock, flagstone if foliated and dimension stone if massive, generally rectangular, and cut to specified measurements for ornamental surfacing in buildings or other construction applications.

Clay/Shale

Clay is a fine-grained, natural, earthy material composed primarily of hydrous aluminum silicates. It is plastic when moist and hardens when dried. Shale is fine-grained sedimentary laminated rock predominantly composed of clay grade and other fine minerals.

Class A Licence

A licence under the Aggregate Resources Act to allow excavation of more than 20,000 tonnes of aggregate annually from a pit or quarry within parts of Ontario that have been designated under the Aggregate Resources Act.

Class B Licence

A licence under the Aggregate Resources Act to allow excavation of 20,000 tonnes or less of aggregate annually from a pit or quarry within parts of Ontario that have been designated under the Aggregate Resources Act.

Crown Land

Ownership of land which is vested in the Crown or owned by the Province of Ontario.

Crushed Stone

Rock or stone mechanically crushed to specified sizes and grading.

Designated Area

An area of the Province identified by regulation under the Aggregate Resources Act where a person requires a licence for the excavation of aggregate from private land.

Disturbed Area

An area within a site that has been, or is being excavated to operate a pit or quarry, and has not been rehabilitated.

Gravel

Small stones and pebbles or a mixture of sand and small stones. More specifically, fragments of rock worn by the action of air and water, larger and coarser than sand. MTO specifications define gravel as unconsolidated granular material greater than 4.75mm.

Housing Starts

The number of housing units started where construction has advanced to 100 per cent of footings. In case of multiple dwellings, a "start" implies the commencement of individual structures.

Inactive Licence

A licence that has been revoked or surrendered prior to the end of the calendar year.

Licence

A licence for a pit or quarry issued under the Aggregate Resources Act allowing for the extraction of aggregate in designated areas.

Licensed Area

A specific area for which a licence has been issued for the extraction of mineral aggregates under the Aggregate Resources Act.

Pit

Land or land under water from which unconsolidated aggregate is being or has been excavated, and has not been rehabilitated.

Private Land

Land owned by an individual or corporation, as opposed to land which is owned by the Crown.

Progressive Rehabilitation

As per the requirements of the Aggregate Resources Act, sequential rehabilitation completed within reasonable time over disturbed land from which aggregate has been extracted. The rehabilitation is carried out according to the Act, the regulations, the site plan, and the conditions of the licence or permit during the period that aggregate is being extracted.

Pits & Quarries Control Act

An Act to manage and regulate mineral aggregate extraction in Ontario. The Act had been automatically repealed and replaced by the Aggregate Resources Act as of January 1, 1990.

Quarry

Land or land under water from which consolidated rock is or has been excavated and the site has not been rehabilitated.

Rehabilitation

To treat the land from which aggregate has been excavated to a pre-excitation condition or use, or to a condition compatible with adjacent land.

Royalty

A payment made to the Crown in recognition of the extraction of aggregates owned by the Crown. Under the Aggregate Resources Act, the royalty is set at a minimum of 25 cents per tonne. The Minister may set a higher rate or may allow exemption.

Sand

Any hard granular rock material finer than gravel and coarser than dust. MTO specifications define sand as granular material ranging in size from .075mm to 4.75 mm.

Wayside Permit

A permit issued to a public authority or a person who has a contract with a public authority for a temporary road project or an urgent project for which no alternative source of aggregate is available under licence or permit. A wayside permit expires 18 months from the date of issue or upon completion of the project, whichever comes first.

APPENDIX B

**HISTORICAL DESIGNATION OF PRIVATE LAND UNDER THE
PITS AND QUARRIES CONTROL ACT AND
THE AGGREGATE RESOURCES ACT
(by Geographic Twp)**

Designations under the Pits and Quarries Control Act (1971-1989)

DECEMBER 19, 1971

Adjala	Euphrasia	Nottawasaga
Albemarle	Flamborough East	Osprey
Albion	Flamborough West	Pelham
Amabel	Grantham	Reach
Ancaster	Grimsby North	Saltfleet
Artemesia	Holland	Stamford
Barton	Keppel	St. Edmunds
Beverly	Lindsay	St. Vincent
Caledon	London	Sydenham
Chinguacousy	Louth	Thorold
Clinton	Melancthon	Toronto Gore
Collingwood	Mono	Trafalgar
Derby	Mulmur	Westminster
Eastnor	Nassagaweya	West Nissouri
Erin	Nelson	Whitby
Esquesing	Niagara	Whitchurch

MARCH 3, 1972

Brock	Lobo	Pickering
East Whitby	Markham	Toronto
Gloucester	Nepean	Vaughan
Hallowell	Osgoode	

MAY 9, 1972

Brantford	Pittsburgh	South Dumfries
Guelph	Puslinch	Waterloo
Kingston	North Dumfries	

AUGUST 15, 1973

Anderdon	Dereham	Humberstone
Bertie	Dunn	Huntley
Blenheim	Eramosa	King
Brighton	Fitzroy	Malden
Clarke	Gosfield South	Manvers
Colchester North	Gosfield North	March
Colchester South	Haldimand	Mersea
Cramahe	Hamilton	Murray
Crowland	Harwich	Nichol
Darlington	Hope	North Cayuga

North Gower
North Oxford
Oneida
Orillia
Oro
Pilkington
Raleigh
Romney

Sidney
Sunnidale
Thurlow
Tilbury East
Tyendinaga
Uxbridge
Vespra
Walpole

Wellesley
West Oxford
Willoughby
Wilmot
Woodhouse
Woolwich
Yarmouth

FEBRUARY 15, 1974

Delaware
North Dorchester

MAY 17, 1974

Pelee

MAY 1, 1975

Alnwick
Amaranth
Arran
Arthur
Asphodel
Balfour
Bayham
Belmont
Bexley
Biddulph
Binbrook
Blandford
Blanshard
Blezard
Bowell
Broder
Burford
Caistor
Camden
Capreol
Cartwright
Cavan
Charlotteville
Chatham
Creighton
Cumberland
Denison
Dieppe
Dill
Douro
Dover
Dowling
Drury

Dryden
Dummer
East York
East Garafraxa
East Nissouri
East Luther
East Gwillimbury
East Oxford
East Zorra
Eldon
Emily
Ennismore
Essa
Etobicoke
Fairbank
Falconbridge
Fenelon
Flos
Gainsborough
Garson
Georgina
Glanford
Glenelg
Goulburn
Graham
Hanmer
Harvey
Houghton
Howard
Hutton
Innisfil
Levack
Lorne

Louise
Lumsden
MacLennan
Maidstone
Malahide
Mara
Mariposa
Marlborough
Maryborough
Matchedash
McKim
Medonte
Middleton
Minto
Morgan
Moulton
Neelon
Norman
North Monaghan
North Walsingham
North Norwich
North Gwillimbury
North York
Oakland
Onondaga
Ops
Orford
Otonabee
Peel
Percy
Proton
Rainham
Rama

Rawden
Rayside
Rochester
Sandwich, East
Sandwich, West
Scarborough
Scott
Scugog
Seneca
Seymour
Sherbrooke
Smith
Snider
South Walsingham

South Cayuga
South Dorchester
South Grimsby
South Norwich
South Monaghan
Sullivan
Tay
Tecumseh
Thorah
Tilbury, North
Tilbury, West
Tiny
Torbolton
Tosorontio

Townsend
Trill
Tuscarora
Verulam
Wainfleet
Waters
West Luther
West Garafraxa
West Gwillimbury
West Zorra
Windham
Wisner
York
Zone

APRIL 6, 1976

Great LaCloche Island
Little LaCloche Island

AUGUST 27, 1976

Avenge
Bosanquet
Carden

Korah
Parke
Prince

Rankin
St. Mary's
Tarentorus

JANUARY 1, 1981

Adelaide
Aldborough
All of the County of Perth
All of the County of Huron
All of the County of Lanark
Ameliasburgh
Athol
Bentinck
Brant
Brooke
Bruce
Carrick
City of Belleville
Culross
Dawn
Dunwich
E. Williams
Egremont
Elderslie
Elzevir and Grimsthorpe

Enniskillen
Euphemia
Exfrid
Greenock
Hillier
Hungerford
Huntingdon
Huron
Kincardine
Kinloss
Madoc
Marmora and Lake
McGillivray
Moore
Mosa
Normanby
North Marysburgh
Plympton
Sarnia
Saugeen

Separated Town of Trenton
Sombra
Sophiasburgh
South Marysburgh
Southwold
Town of Deseronto
Tudor
United Counties of Prescott
and Russell
United Counties of Stormont,
Dundas & Glengarry
United Counties of Leeds and
Grenville
Villages of Deloro, Frankford,
Madoc, Marmora, Stirling
and Tweed
W. Williams
Walford
Warwich
Wyoming

JULY 1, 1984

Storrington

Designations under the Aggregate Resources Act (Jan. 1, 1990)

APRIL 1, 1992

Adolphustown	Howe Island	Somerville
Amherst Island	Laxton	South Fredericksburgh
Bedford	Longford	Town of Napanee
Camden East	Loughborough	Villages of Bath and
Dalton	North Fredericksburgh	Newburgh
Digby	Portland	Wolfe Island
Ernestown	Richmond	

SEPTEMBER 1, 1993

Admaston		Towns of Arnprior and
Alice and Fraser	McNab	Renfrew
Bagot and Blithfield	Pembroke	Villages of Beachburg,
Bromley	Petawawa	Braeside, Cobden and
City of Pembroke	Ross	Petawawa
Horton	Stafford	Westmeath

JANUARY 1, 1998

Anderson	Gaudette	Ley
Appleby	Gough	Loughrin
Archibald	Hagar	Macdonald
Aweres	Hallam	May
Awrey	Harrow	McKinnon
Baldwin	Harty	Meredith and Aberdeen
Burwash	Haviland	Additional
Cartier	Hawley	Merritt
Cascaden	Hendrie	Mongowin
Casimir	Henry	Nairn
Chesley Additional	Herrick	Pennefather
Cleland	Hess	Ratter
Cosby	Hilton	Secord
Curtin	Hodgins	Servos
Delamere	Hoskin	Shakespeare
Dennis	Hyman	Shields
Deroche	Jarvis	St. Joseph
Duncan	Jennings	Street
Dunnet	Jocelyn	Tarbutt and Tarbutt
Eden	Johnson	Additional
Fenwick	Kars	Tilley
Fisher	Kehoe	Tilton
Foster	Laird	Tupper
Foy	Laura	VanKoughnet

DECEMBER 4, 1999

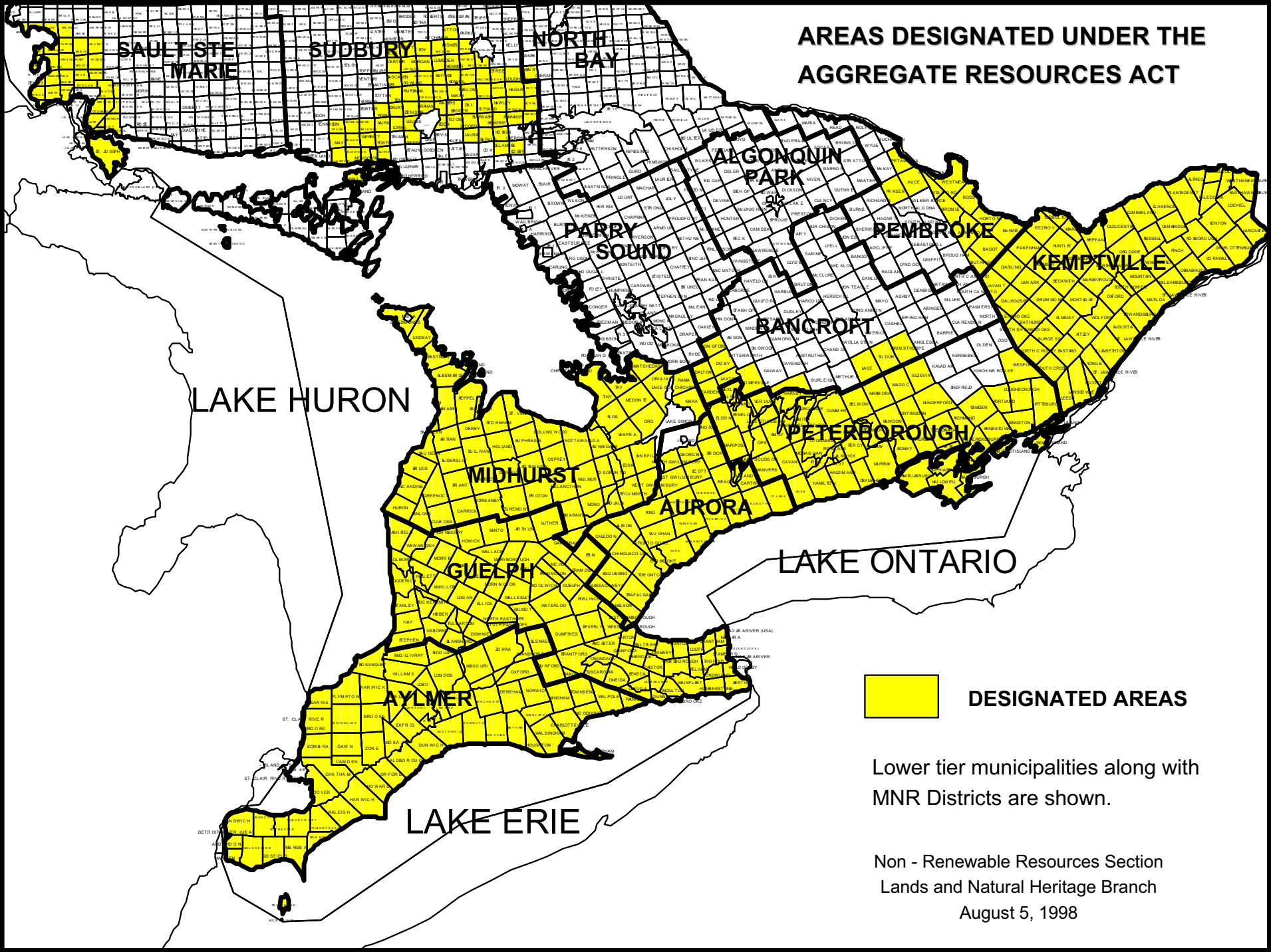
Village of Hilton Beach

CANADIAN PORTLAND CEMENT ASSOCIATION GEOGRAPHIC AREAS



Area 1 Southwest	Area 2 Peninsula	Area 3 West Central	Area 4 GTA	Area 5 East Central	Area 6 East	Area 7 Northeast	Area 8 Northwest
Essex	Niagara	Bruce	Metro Toronto	Kawartha Lakes	Prescott & Russell	Nipissing	Algoma
Chatham-Kent	Brant	Grey	Peel	Peterborough	Leeds & Grenville	Parry Sound	Thunder Bay
Lambton	Haldimand	Simcoe	York	Haliburton	Stormont, Dundas, & Glengarry	TIMISKAMING	Kenora
Elgin	Norfolk	Dufferin	Durham	Northumberland	Frontenac	Cochrane	Rainy River
Middlesex	Hamilton	Wellington	Halton	Hastings	Greater Ottawa	Sudbury District	
Huron		Waterloo		Prince Edward	Lanark	Greater Sudbury	
Perth				Muskoka	Renfrew	Manitoulin	
Oxford					Lennox & Addington		

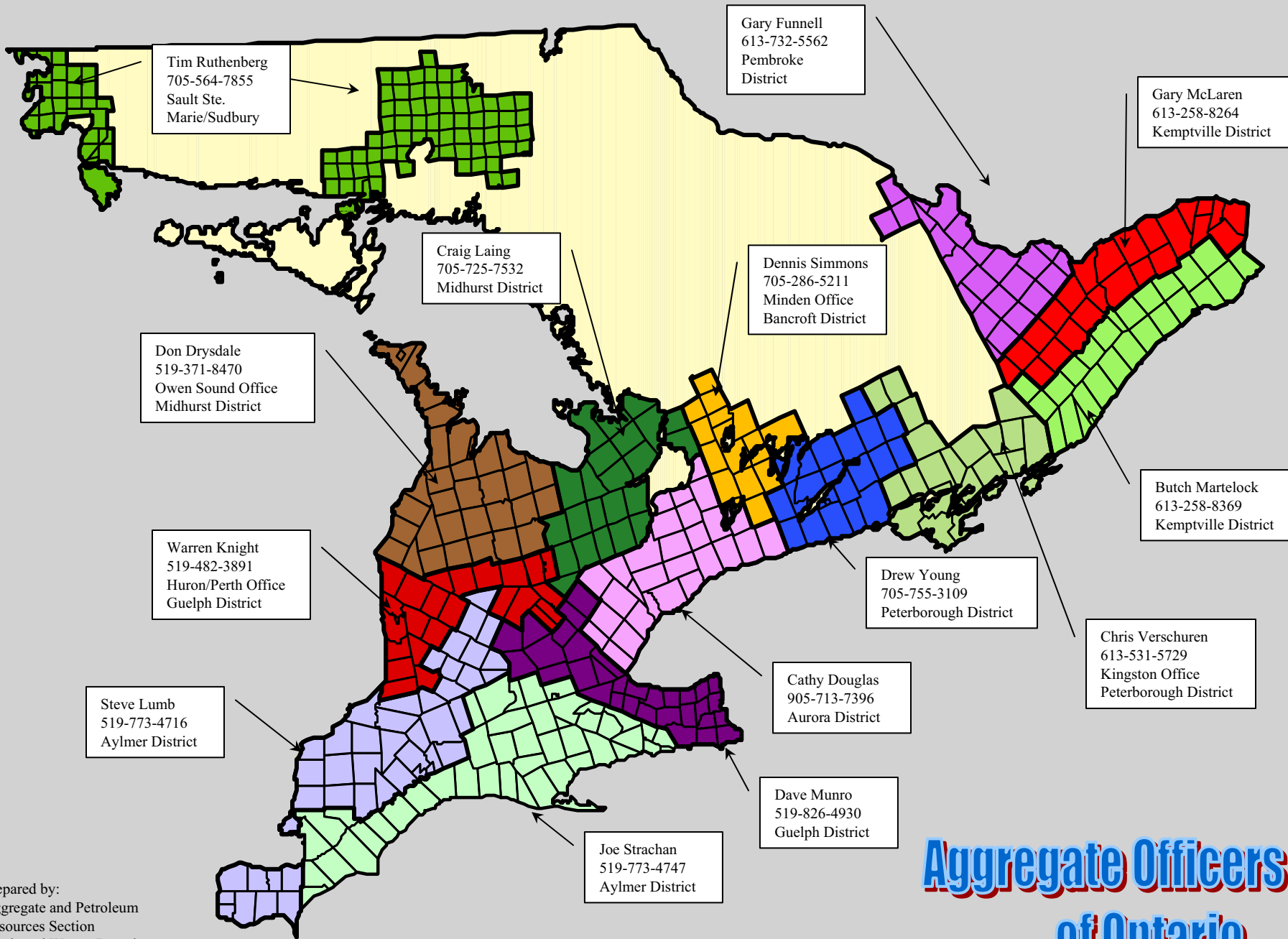
**AREAS DESIGNATED UNDER THE
AGGREGATE RESOURCES ACT**



 **DESIGNATED AREAS**

Lower tier municipalities along with
MNR Districts are shown.

Non - Renewable Resources Section
Lands and Natural Heritage Branch
August 5, 1998



Aggregate Officers of Ontario

Prepared by:
Aggregate and Petroleum
Resources Section
Lands and Waters Branch
July 31, 2001