



- MINERAL
- AGGREGATES
- IN ONTARIO

Statistical Update

2 0 0 9

Prepared by:



**THE ONTARIO AGGREGATE
RESOURCES CORPORATION**

MINERAL AGGREGATES IN ONTARIO

PRODUCTION STATISTICS

2009

Prepared by

The Ontario Aggregate Resources Corporation

TABLE OF CONTENTS

Overview	1
Management of Ontario's Mineral Aggregate Resources	1
Role of the Ministry of Natural Resources	2
Aggregate Production	4

TABLES AND GRAPHS

1. Aggregate Production in Ontario 1997-2009	5
2. Licence and Wayside Permit Production by Lower Tier Municipality	6
3. Licence and Wayside Permit Production by Upper Tier Municipality	14
4. The Top 10 Producing Municipalities	15
5. Number and Type of Aggregate Licences	16
6. Licenced Aggregate Production by Commodity Type (MNR Districts).....	17
7. Aggregate Permit Production by Commodity Type (MNR Districts)	18
8. Aggregate Permit Production by Commodity Type (by year)	19
9. Aggregate Permit & Licence Production (CAC Geographic Areas)	20
10. Rehabilitation of Licenced Aggregate Sites	21
11. Number and Type of Aggregate Permits	22

APPENDICES

- A. Glossary of Terms
- B. Historical Designation of Private Land under the Pits and Quarries Control Act and the Aggregate Resources Act
- C. CPCA (now CAC) Geographic Areas
- D. Map of Areas Designated under the Aggregate Resources Act
- E. Map of Aggregate Licence Officers of Ontario

Additional copies of this report may be obtained at a cost of \$5.00 each to cover preparation and postage from:

The Ontario Aggregate Resources Corporation
1001 Champlain Avenue, Suite 103
Burlington, ON L7L 5Z4
Toll Free 1-866-308-6272
or Telephone (905) 319-7424
or Fax (905) 319-7423

Cette publication spécialisée n'est disponible qu'en anglais

For internal use only.

*In order for TOARC to better meet the needs of those using this publication,
we welcome any comments or suggestions.*

You may send your comments/suggestions to the attention of John Dorlas,
Database Administrator at the above address or fax number or contact him directly via
email, jcdorlas@toarc.com

MINERAL AGGREGATES IN ONTARIO

Overview

Mineral aggregate is an indispensable commodity to the infrastructure of our modern 'built environment'. High quality aggregate is a key ingredient in the production of ready-mixed concrete, manufactured concrete products of all types (block, brick, precast, etc.), asphalt pavements and sub-surface fill which is so important in providing drainage and load bearing base for structures. Aggregates literally provide the basis for a \$37 billion construction industry that employs over 292,000 people in Ontario. The aggregate industry employs an estimated 7,000 people directly and some 34,000 people indirectly in services such as transportation and equipment. The aggregate industry also makes a significant contribution to the \$1.9 billion cement and concrete manufacturing industry, the \$1.3 billion glass and glass products industry, and a \$2.9 billion pharmaceutical and medicine manufacturing industry in Ontario.

In 2009, this basic non-renewable resource was supplied from 3,762 licensed aggregate sites on private land in designated parts of the Province and 3,038 permitted sites on Crown land. It is estimated that over 50% of all aggregate produced in the Province is sold to public authorities for the construction and maintenance of the public infrastructure such as roads, bridges, etc.

Management of Ontario's Mineral Aggregate Resources

At the Provincial level, the management of Ontario's aggregate resources is the responsibility of the Ministry of Natural Resources (MNR). In 1997, in an effort to better focus resources on the delivery of core programs, the MNR took steps to build a partnership with private industry to manage certain administrative functions. Accordingly, subsections 6.1 (1) and 6.1 (3) of the *Aggregate Resources Act*, R.S.O. 1990, Chap. A.8, as amended (the "Act"), gave the Minister the power to create the Aggregate Resources Trust (the "Trust") and appoint a trustee to look after its affairs. TOARC was incorporated in 1997 to act as trustee of the Aggregate Resources Trust, a trust created under the authority of the Aggregate Resources Act and pursuant to a trust indenture between the Corporation and the Minister of Natural Resources for the Province of Ontario.

The Trust Purposes include:

1. The rehabilitation of land for which a Licence or Permit has been revoked and for which final rehabilitation has not been completed;
2. The rehabilitation of abandoned pits and quarries, including surveys and studies respecting their location and condition;
3. Research on aggregate resources management, including rehabilitation;
4. Payments to the Crown in right of Ontario and to regional municipalities, counties and local municipalities in accordance with regulations made pursuant to the Act;
5. The management of the Abandoned Pits and Quarries Rehabilitation Fund;

6. Such other purposes as may be provided for by or pursuant to Paragraph 6.1(2) 5 of the Act.

In August of 1999, Addendum 1 to the Original Trust Indenture was signed to expand the Trust Purposes to include:

- (a) The education and training of persons engaged in or interested in the management of the aggregate resources of Ontario, the operation of pits or quarries, or the rehabilitation of land from which aggregate has been excavated;
- (b) The gathering, publishing and dissemination of information relating to the management of the aggregate resources of Ontario, the control and regulation of aggregate operations and the rehabilitation of land from which aggregate has been excavated.

TOARC is governed by a multi-stakeholder board of directors. The seven-member Board is composed of directors from the Ontario Stone, Sand & Gravel Association of Ontario (OSSGA), representatives from environmental groups, municipalities and non-OSSGA member aggregate producers. TOARC maintains its own office facilities and management staff. TOARC as the ARA trustee is responsible to the Minister of Natural Resources to fulfill the Trust purposes as outlined in Bill 52. The MNR maintains a presence on the Board with an ex officio representative.

Since its inception in 1997, TOARC has focused upon the efficient collection and disbursement of aggregate resource charges, the auditing of production reports, the rehabilitation of abandoned pits and quarries through the MAAP program, the creation of an inventory of sites where licences have been revoked, as well as their rehabilitation, and the general management of the Trust assets.

Role of the Ministry of Natural Resources

While the MNR has developed certain external partnerships for the delivery of portions of their Aggregate Resources Program, their mission remains:

- To protect the provincial interest in aggregate resources and develop, maintain and enforce appropriate technical standards.
- To provide leadership in the development of partnerships with key stakeholders for the effective management of aggregate resources to benefit the people of Ontario.

With the guidance of the mission statements, a number of program objectives have been created which drive MNR's daily business practices. These program objectives include:

- Promote exploration and ensure availability through the conservation and orderly development of aggregate resources.

- Ensure that aggregate resources are developed with a high standard of environmental protection and public safety.
- Upgrade and maintain current information databases essential for sound technical and scientific decisions.
- Ensure fair revenue from the production of Crown resources.
- Ensure industry compliance with technical standards.
- Train staff and external clients in skills and knowledge essential for the effective delivery of the Aggregate Resources Program.

The continued business approach for the Aggregate Resources Program is based on the following principles:

- The core business of the program is:
 - Standards and policy development
 - Technical approvals
 - Ensuring compliance with standards
- Private industry clients assume responsibility and accountability for:
 - Compliance reporting
 - Financial management
 - Operations

The delegation of authority policy approved in July of 1998 continues. The objective of this policy is to delegate Ministerial authority to the level that provides the best efficiencies and customer service. Standing committees with the industry continue to encourage ongoing communication and customer service.

Core program staff responsible for the standards and policy development, program design and program coordination, evaluation and monitoring are part of the Regional Operations Division, Integration Branch, Program Coordination Section. The districts that have either Aggregate Resources Officers or Aggregate Technicians deliver this program. The specialists and technicians, who are designated inspectors, are the core staff responsible for the acceptance of applications and are leads when dealing with compliance. These inspectors often have responsibility beyond the administrative boundaries of their districts. Also, at the district level, reporting to the Compliance Supervisor, Conservation Officers take an active role in enforcement actions under the Aggregate Resources Act.

In 1997, certain responsibilities with respect to the issuing and administration of permits and wayside permits were delegated to the Ontario Ministry of Transportation (MTO), specific to MTO contracts and needs.

Aggregate Production

Overall production of mineral aggregates in 2009 totaled approximately 153 million tonnes, down 14 million tonnes or 8.4% from the previous year. Production from licenced operations was down 15 million tonnes or 9.7% compared to 2008. Wayside permit production increased 100% from 2008 on relatively small volumes (.1 million in 2008 compared to .2 million in 2009). Production from aggregate permits on Crown Land increased 15.4% from 2008 (7.5 million in 2009 from 6.5 million tonnes in 2008).

Note: Totals and percentage changes are based on rounded numbers from Table 1.

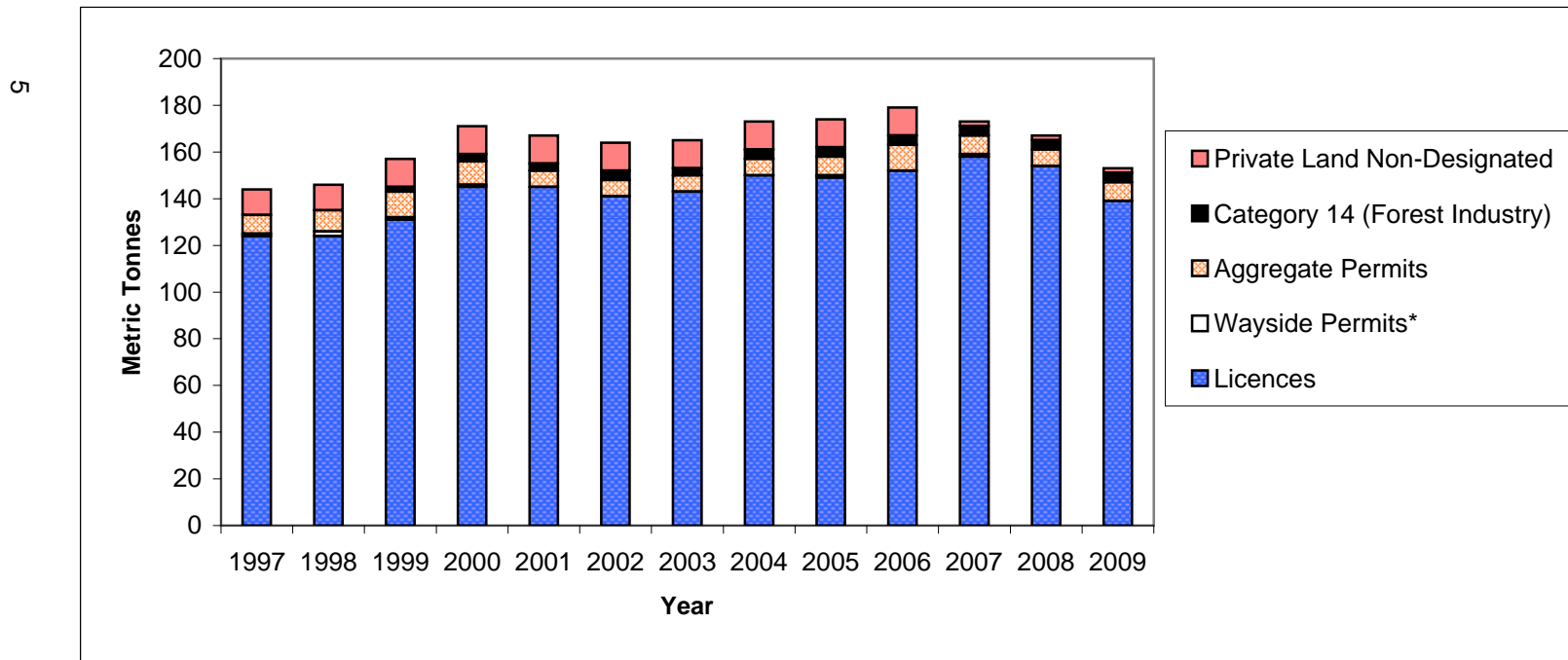
Table 1

AGGREGATE PRODUCTION IN ONTARIO - 1997 - 2009
(rounded to nearest million tonnes)

	1997	1998	1999	2000	2001	2002	2003	2004	2005	2006	2007	2008	2009
Licences	124	124	131	145	145	141	143	150	149	152	158	154	139
Wayside Permits*	1	2	1	1	0	0	0	0	1	0	1	0	0
Aggregate Permits	8	9	11	10	7	7	7	7	8	11	8	7	8
Category 14 (Forest Industry)	-	-	2	3	3	4	3	4	4	4	4	4	4
Private Land Non-Designated (estimated)	11	11	12	12	12	12	12	12	12	12	2	2	2
ONTARIO TOTAL	144	146	157	171	167	164	165	173	174	179	173	167	153

*Wayside Permit production is reported as the 'total applied for' tonnage of all permits issued, adjusted where actual tonnages for completed contracts are known.

*Actual production for Wayside Permits was .2 million tonnes for 2001, .3 million tonnes for 2002, .3 million tonnes for 2003, .1 million tonnes for 2004, .3 million tonnes for 2006, .1 million tonnes for 2008, and .2 million tonnes for 2009



Production Statistics Report
Table 2 Lower Tier Grouping Guidelines

The guiding principal is to not disclose the confidential information of a single client's tonnage.

1. There must be a least 3 clients with a minimum of 2 reporting tonnage, each with licenses, in any municipal (lower) tier that appears in the stats report.
2. If the above guideline can't be met then the grouping of lower tiers is required based on the following rules:
 - a. Upper tiers with multiple lower tier groups of 2 or less must be combined for the 3 client minimum lower tier grouping provided there are at least 2 clients reporting tonnage.
 - b. The preferred criteria for determining groups will be based on geographical proximity.
 - c. A single lower tier reporting ZERO tonnage is not reported if it is not required for the above minimum 3 client grouping.
 - d. If geographic proximity can't be resolved then historical (grouping of past stats reports) will determine grouping.

Table 2

**LICENCE AND WAYSIDE PERMIT PRODUCTION
BY LOWER TIER MUNICIPALITY**

Municipality	Licences (Reported in Metric Tonnes)	Wayside Permits	Total
<i>Algoma District</i>			
Algoma District, Unorganized	63,288.62		63,288.62
Blind River, Town of/Spanish, Town of/The North Shore, Tp/ Elliot Lake, City of	72,081.08		72,081.08
Bruce Mines, Town of/Huron Shores, Municipality of/ Plummer Additional Tp	1,584,799.90		1,584,799.90
Hilton Tp	66,596.42		66,596.42
Jocelyn Tp	87,770.92		87,770.92
Johnson Tp/Tarbutt & Tarbutt Add'l Tp	33,903.14		33,903.14
Macdonald, Meredith & Aberdeen Add'l Tp/St. Joseph Tp	16,804.85		16,804.85
Sault Ste. Marie, City of/Prince Tp	679,443.57		679,443.57
Sub-Total	2,604,688.50	0.00	2,604,688.50
<i>Brant</i>			
Brant, County of/Brantford, City of	1,448,515.70		1,448,515.70
Sub-Total	1,448,515.70	0.00	1,448,515.70
<i>Bruce</i>			
Arran-Elderslie, Municipality of	115,590.30		115,590.30
Brockton, Municipality of	118,057.26		118,057.26
Huron-Kinloss Tp	339,631.25		339,631.25
Kincardine, Municipality of	28,082.70		28,082.70
Northern Bruce Peninsula, Municipality of	146,069.63		146,069.63
Saugeen Shores, Town of	275,589.26		275,589.26
South Bruce, Municipality of	432,813.82		432,813.82
South Bruce Peninsula, Town of	270,583.15		270,583.15
Sub-Total	1,726,417.37	0.00	1,726,417.37
<i>Chatham-Kent</i>			
Chatham-Kent, Municipality of	317,792.33		317,792.33
Sub-Total	317,792.33	0.00	317,792.33
<i>Dufferin</i>			
Amaranth Tp/East Luther Grand Valley Tp	111,209.00		111,209.00
East Garafraxa Tp	1,066,348.46		1,066,348.46
Melancthon Tp	762,343.69		762,343.69
Mono Tp	500,412.94		500,412.94
Mulmur Tp	236,921.87		236,921.87
Sub-Total	2,677,235.96	0.00	2,677,235.96
<i>Durham</i>			
Brock Tp	1,099,537.77		1,099,537.77
Clarington, Municipality of	4,054,451.50		4,054,451.50
Oshawa, City of/Scugog Tp/Whitby, Town of	84,184.94		84,184.94
Uxbridge Tp	3,013,444.86		3,013,444.86
Sub-Total	8,251,619.07	0.00	8,251,619.07
<i>Elgin</i>			
Bayham/West Elgin, Municipality of/Malahide Tp	318,347.74		318,347.74
Central Elgin, Municipality of	244,579.61		244,579.61
Sub-Total	562,927.35	0.00	562,927.35

Table 2

**LICENCE AND WAYSIDE PERMIT PRODUCTION
BY LOWER TIER MUNICIPALITY**

Municipality	Licences (Reported in Metric Tonnes)	Wayside Permits	Total
Essex			
Amherstburg, Town of/Leamington, Municipality of/Pelee Tp	1,390,816.77		1,390,816.77
Kingsville, Town of	330,898.50		330,898.50
Sub-Total	1,721,715.27	0.00	1,721,715.27
Frontenac			
Central Frontenac Tp	204,859.55		204,859.55
Frontenac Islands Tp	398,327.46		398,327.46
Kingston, City of	1,477,063.83		1,477,063.83
North Frontenac Tp	162,105.65		162,105.65
South Frontenac Tp	366,480.59		366,480.59
Sub-Total	2,608,837.08	0.00	2,608,837.08
Greater Sudbury			
Greater Sudbury, City of	2,066,917.81		2,066,917.81
Sub-Total	2,066,917.81	0.00	2,066,917.81
Grey			
Chatsworth Tp	469,513.03		469,513.03
Georgian Bluffs, Tp	394,207.98		394,207.98
Grey Highlands, Municipality of	333,346.12		333,346.12
Meaford, Municipality of	432,638.76		432,638.76
Southgate Tp	421,512.81	141,178.53	562,691.34
The Blue Mountains, Town of	265,847.75		265,847.75
West Grey, Municipality of	395,857.07		395,857.07
Sub-Total	2,712,923.52	141,178.53	2,854,102.05
Haldimand			
Haldimand, County of	1,132,047.93		1,132,047.93
Sub-Total	1,132,047.93	0.00	1,132,047.93
Haliburton			
Algonquin Highlands, Tp	44,225.38		44,225.38
Dysart et al, Tp	252,205.95		252,205.95
Highlands East, Tp	26,095.52		26,095.52
Minden Hills, TP	163,776.25		163,776.25
Sub-Total	486,303.10	0.00	486,303.10
Halton			
Burlington, City of/Halton Hills, Town of	3,171,775.53		3,171,775.53
Milton, Town of	3,703,201.73		3,703,201.73
Sub-Total	6,874,977.26	0.00	6,874,977.26
Hamilton			
Hamilton, City of	4,874,604.45		4,874,604.45
Sub-Total	4,874,604.45	0.00	4,874,604.45

Table 2

**LICENCE AND WAYSIDE PERMIT PRODUCTION
BY LOWER TIER MUNICIPALITY**

Municipality	Licences (Reported in Metric Tonnes)	Wayside Permits	Total
<i>Hastings</i>			
Bancroft, Town of	15,361.60		15,361.60
Belleville, City of	798,897.48		798,897.48
Carlo/Mayo Tp	20,167.72		20,167.72
Centre Hastings, Municipality of	155,690.52		155,690.52
Faraday Tp	42,241.92		42,241.92
Hasting Highlands	83,820.72		83,820.72
Limerick Tp	31,594.75		31,594.75
Madoc Tp	817,749.47		817,749.47
Marmora & Lake, Municipality of	28,985.00		28,985.00
Quinte West, City of	1,009,179.18		1,009,179.18
Tweed, Municipality of	134,271.94		134,271.94
Tyendinaga Tp	220,095.55		220,095.55
Wollaston	25,416.95		25,416.95
Sub-Total	3,383,472.80	0.00	3,383,472.80
<i>Huron</i>			
Ashfield-Colborne-Wawanosh Tp	817,195.50		817,195.50
Bluewater, Municipality of	14,003.41		14,003.41
Central Huron, Municipality of	716,376.30		716,376.30
Howick Tp	221,852.03		221,852.03
Huron East, Municipality of	893,399.74		893,399.74
Morris-Turnberry, Municipality of	177,694.85		177,694.85
North Huron Tp	32,884.90		32,884.90
South Huron, Municipality of	123,399.62		123,399.62
Sub-Total	2,996,806.35	0.00	2,996,806.35
<i>Kawartha Lakes</i>			
Kawartha Lakes, City of	4,518,775.73		4,518,775.73
Sub-Total	4,518,775.73	0.00	4,518,775.73
<i>Lambton</i>			
Warwick Tp/Plympton-Wyoming, Town of	255,243.64		255,243.64
Lambton Shores, Municipality of	222,789.58		222,789.58
Sub-Total	478,033.22	0.00	478,033.22
<i>Lanark</i>			
Beckwith Tp	728,942.01		728,942.01
Drummond-North Elmsley Tp	83,995.50		83,995.50
Lanark Highlands Tp	885,241.59		885,241.59
Mississippi Mills, Town of	497,436.69		497,436.69
Montague Tp	270,214.17		270,214.17
Tay Valley Tp	20,121.10		20,121.10
Sub-Total	2,485,951.06	0.00	2,485,951.06

Table 2

**LICENCE AND WAYSIDE PERMIT PRODUCTION
BY LOWER TIER MUNICIPALITY**

Municipality	(Reported in Metric Tonnes)	Licences	Wayside Permits	Total
Leeds & Grenville				
Athens Tp/Front of Yonge Tp		269,812.07		269,812.07
Augusta Tp		110,041.40		110,041.40
Edwardsburgh-Cardinal Tp		104,861.45		104,861.45
Elizabethtown-Kitley Tp		403,275.63		403,275.63
Leeds and the Thousand Islands Tp		494,291.10		494,291.10
Merrickville-Wolford, Village of		33,472.11		33,472.11
North Grenville Tp		486,402.94		486,402.94
Rideau Lakes Tp		217,712.95		217,712.95
Sub-Total		2,119,869.65	0.00	2,119,869.65
Lennox & Addington				
Addington Highlands Tp		21,559.62		21,559.62
Greater Napanee, Town of		300,235.72		300,235.72
Loyalist Tp		1,428,671.34		1,428,671.34
Stone Mills Tp		217,765.55		217,765.55
Sub-Total		1,968,232.23	0.00	1,968,232.23
Manitoulin District				
Assignack, Tp		3,302.48		3,302.48
Gordon/Barrie Island/Burpee & Mills, Tp/Cockburn Island, Tp		40,318.04		40,318.04
Billings, Tp		13,438.00		13,438.00
Central Manitoulin Tp		52,046.05		52,046.05
Northeastern Manitoulin & The Islands		92,398.28		92,398.28
Tehkummah, Tp		25,418.76		25,418.76
Unorganized - Manitoulin D		2,675,147.11		2,675,147.11
Sub-Total		2,902,068.72	0.00	2,902,068.72
Middlesex				
Adelaide Metcalfe Tp		47,389.00		47,389.00
London, City of		1,038,054.15		1,038,054.15
Lucan Biddulph Tp		10,682.01		10,682.01
Middlesex Centre Tp		828,680.29		828,680.29
North Middlesex, Municipality of		147,115.08		147,115.08
Strathroy-Caradoc Tp		27,615.00		27,615.00
Thames Centre, Municipality of		2,213,982.93		2,213,982.93
Sub-Total		4,313,518.46	0.00	4,313,518.46
Muskoka				
Bracebridge		861,931.03		861,931.03
Georgian Bay		5,847.00		5,847.00
Gravenhurst		109,507.94		109,507.94
Huntsville		994,389.55		994,389.55
Lake of Bays, Tp		168,102.03		168,102.03
Muskoka Lakes, Tp		185,070.16		185,070.16
Sub-Total		2,324,847.71	0.00	2,324,847.71
Niagara				
Fort Erie, Town of/Pelham, Town of/Port Colborne, City of/ Wainfleet Tp		1,663,445.39		1,663,445.39
Lincoln, Town of/Niagara-on-the-Lake, Town of		1,170,732.10		1,170,732.10
Niagara Falls, City of		1,093,396.63		1,093,396.63
Sub-Total		3,927,574.12	0.00	3,927,574.12

Table 2

**LICENCE AND WAYSIDE PERMIT PRODUCTION
BY LOWER TIER MUNICIPALITY**

Municipality	(Reported in Metric Tonnes)	Licences	Wayside Permits	Total
<i>Nipissing District</i>				
Bonfield Tp		25,858.84		25,858.84
Calvin Tp		24,380.18		24,380.18
Chisholm Tp		73,742.70		73,742.70
Mattawan Tp/South Algonquin Tp		27,464.23		27,464.23
North Bay, City of		526,371.65		526,371.65
Papineau-Cameron Tp		68,756.83		68,756.83
Unorganized - Nipissing D		5,705.00		5,705.00
West Nipissing, Municipality of		461,640.50		461,640.50
Sub-Total		1,213,919.93	0.00	1,213,919.93
<i>Norfolk</i>				
Norfolk, County of		428,877.53		428,877.53
Sub-Total		428,877.53	0.00	428,877.53
<i>Northumberland</i>				
Alnwick-Haldimand Tp		181,120.05		181,120.05
Brighton, Municipality of		234,713.60		234,713.60
Cramahe Tp		1,823,007.72		1,823,007.72
Hamilton Tp		291,605.90		291,605.90
Port Hope, Municipality of		22,812.57		22,812.57
Trent Hills, Municipality of		249,895.81		249,895.81
Sub-Total		2,803,155.65	0.00	2,803,155.65
<i>Ottawa</i>				
Ottawa, City of		11,025,953.94		11,025,953.94
Sub-Total		11,025,953.94	0.00	11,025,953.94
<i>Oxford</i>				
Blandford-Blenheim Tp		514,510.50		514,510.50
East Zorra-Tavistock Tp/Norwich Tp		130,740.64		130,740.64
South-West Oxford Tp		1,420,864.09		1,420,864.09
Zorra Tp		2,845,098.02		2,845,098.02
Sub-Total		4,911,213.25	0.00	4,911,213.25
<i>Parry Sound District</i>				
ArmourTp		732,600.67		732,600.67
Callander, Municipality of		20,198.90		20,198.90
Carling Tp/The Archipelago Tp		22,701.16		22,701.16
Joly Tp		31,017.48		31,017.48
Kearney, Town of		31,411.94		31,411.94
Macher Tp		77,741.57		77,741.57
Magnetawan, Municipality of		220,081.06		220,081.06
McDougall Tp		36,326.69		36,326.69
McKeller Tp		8,304.04		8,304.04
McMurrich-Monteith Tp		26,687.94		26,687.94
Nipissing Tp		25,312.60		25,312.60
Perry Tp		72,584.75		72,584.75
Powassan, Municipality of		59,764.97		59,764.97
Ryerson Tp		39,888.22		39,888.22
Seguin Tp		441,722.62		441,722.62
Strong Tp		29,413.92		29,413.92
Unorganized - Parry Sound		477,838.21		477,838.21
Whitestone The Municipality of		21,477.04		21,477.04
Sub-Total		2,375,073.78	0.00	2,375,073.78

Table 2

**LICENCE AND WAYSIDE PERMIT PRODUCTION
BY LOWER TIER MUNICIPALITY**

(Reported in Metric Tonnes)

Municipality	Licences	Wayside Permits	Total
Peel			
Caledon, Town of	3,560,597.39		3,560,597.39
Sub-Total	3,560,597.39	0.00	3,560,597.39
Perth			
North Perth, Town of/St. Marys, Separated Town of	336,019.11		336,019.11
Perth East Tp	385,065.15		385,065.15
Perth South Tp	1,087,694.28		1,087,694.28
West Perth Tp	58,838.33		58,838.33
Sub-Total	1,867,616.87	0.00	1,867,616.87
Peterborough			
Asphodel-Norwood Tp	808,311.60		808,311.60
Cavan-Millbrook-North Monaghan Tp	27,604.01		27,604.01
Douro-Dummer Tp	436,479.99		436,479.99
Galway-Cavendish-Harvey Tp	423,357.91		423,357.91
North Kawartha Tp	706,843.76		706,843.76
Havelock-Belmont-Methuen Tp	23,311.57		23,311.57
Otonabee-South Monaghan Tp	204,765.81		204,765.81
Smith-Ennismore-Lakefield Tp	542,302.66		542,302.66
Sub-Total	3,172,977.31	0.00	3,172,977.31
Prescott & Russell			
Alfred & Plantagenet Tp	361,512.64		361,512.64
Champlain Tp	648,712.00		648,712.00
Clarence-Rockland, City of	241,623.04		241,623.04
East Hawkesbury Tp	14,518.12		14,518.12
Russell Tp	125,819.12		125,819.12
The Nation, Municipality of	306,589.93		306,589.93
Sub-Total	1,698,774.85	0.00	1,698,774.85
Prince Edward Co			
Prince Edward, County of	1,615,995.00		1,615,995.00
Sub-Total	1,615,995.00	0.00	1,615,995.00
Renfrew			
Admaston-Bromley Tp/Renfrew, Town of	112,475.46		112,475.46
Bonnechere Valley Tp	155,909.77		155,909.77
Brudenell, Lyndoc and Raglan Tp	66,421.41		66,421.41
Deep River Tp/Head, Clara & Maria Tp	6,296.00		6,296.00
Greater Madawaska Tp	48,287.12		48,287.12
Horton Tp	341,281.21		341,281.21
Killaloe, Hagarty and Richards Tp	47,585.04		47,585.04
Laurentian Hills	89,429.90		89,429.90
Laurentian Valley Tp	391,436.77		391,436.77
Madawaska Valley	88,299.84		88,299.84
McNab-Braeside Tp	487,024.03		487,024.03
North Algona-Wilberforce Tp	55,661.03		55,661.03
Petawawa, Town of	191,529.28		191,529.28
Whitewater Region Tp	205,737.07		205,737.07
Sub-Total	2,287,373.93	0.00	2,287,373.93

Table 2

**LICENCE AND WAYSIDE PERMIT PRODUCTION
BY LOWER TIER MUNICIPALITY**

Municipality	Licences (Reported in Metric Tonnes)	Wayside Permits	Total
<i>Simcoe</i>			
Adjala-Tosorontio Tp	559,806.64		559,806.64
Bradford West Gwillimbury, Town of/Midland, Town of/ Penetanguishine, Town of	337,062.82		337,062.82
Clearview Tp	1,132,136.18		1,132,136.18
Essa Tp	48,477.23		48,477.23
Innisfil, Town of	48,509.00		48,509.00
New Tecumseth, Town of	92,152.00		92,152.00
Oro-Medonte Tp	2,180,602.03		2,180,602.03
Ramara Tp	1,926,109.68		1,926,109.68
Severn Tp	2,571,324.55		2,571,324.55
Springwater Tp	1,116,382.34		1,116,382.34
Tay Tp	138,571.68		138,571.68
Tiny Tp	309,796.13		309,796.13
Sub-Total	10,460,930.28	0.00	10,460,930.28
<i>Stormont, Dundas & Glengarry</i>			
North Dundas Tp	753,311.04		753,311.04
North Glengarry Tp	48,019.31		48,019.31
North Stormont Tp	1,008,267.55		1,008,267.55
South Dundas Tp	186,410.25		186,410.25
South Glengarry Tp	447,375.70		447,375.70
South Stormont Tp	978,243.59		978,243.59
Sub-Total	3,421,627.44	0.00	3,421,627.44
<i>Sudbury District</i>			
Baldwin Tp	106,394.55		106,394.55
French River, Municipality of	134,225.57		134,225.57
Killarny, Municipality of/Nairn & Hyman Tp	78,546.70		78,546.70
Markstay-Warren, Municipality of	70,858.71		70,858.71
Sables Spanish Rivers Tp/Espanola, Town of	68,342.50		68,342.50
Sudbury District, Unorganized	345,603.83		345,603.83
Sub-Total	803,971.86	0.00	803,971.86
<i>Thunder Bay District</i>			
Conmee, Tp	398,704.87		398,704.87
Neebing, Municipality of	15,412.83		15,412.83
Oliver Paipoonge, Municipality of	284,617.13	61,833.96	346,451.09
Shuniah, Tp	270,845.03		270,845.03
Thunder Bay, City of	2,939.64		2,939.64
Sub-Total	972,519.50	61,833.96	1,034,353.46
<i>Waterloo</i>			
Cambridge, City of/Kitchener, City of	393,135.13		393,135.13
North Dumfries Tp	3,387,150.78		3,387,150.78
Wellesley Tp	1,434,621.76		1,434,621.76
Wilmot Tp	1,315,064.18		1,315,064.18
Woolwich Tp	599,258.48		599,258.48
Sub-Total	7,129,230.33	0.00	7,129,230.33

Table 2

**LICENCE AND WAYSIDE PERMIT PRODUCTION
BY LOWER TIER MUNICIPALITY**

Municipality	(Reported in Metric Tonnes)	Licences	Wayside Permits	Total
Wellington				
Centre Wellington Tp		1,032,069.75		1,032,069.75
Erin, Town of		889,555.04		889,555.04
Guelph-Eramosa Tp		615,329.08		615,329.08
Mapleton Tp		64,309.00		64,309.00
Minto, Town of		345,981.78		345,981.78
Puslinch Tp		3,424,807.93		3,424,807.93
Wellington North Tp		254,621.68		254,621.68
Sub-Total		6,626,674.26	0.00	6,626,674.26
York				
East Gwillimbury, Town of		181,588.02		181,588.02
Georgina, Town of		20,569.15		20,569.15
Whitchurch-Stouffville, Town of		772,851.55		772,851.55
Sub-Total		975,008.72	0.00	975,008.72
GRAND TOTAL		138,838,164.56	203,012.49	139,041,177.05

Table 3

**LICENCE AND WAYSIDE PRODUCTION
BY UPPER TIER MUNICIPALITY
(Million Tonnes)**

Municipality	2000	2001	2002	2003	2004	2005	2006	2007	2008	2009
Algoma, District of	0.8	0.6	0.8	0.6	0.8	1.9	1.2	2.8	2.9	2.6
Brant Co.	2.1	2.0	1.8	2.1	2.0	1.8	2.3	2.3	2.2	1.4
Bruce Co.	1.7	1.6	1.7	1.7	1.9	1.8	2.3	2.4	2.0	1.7
Chatham-Kent, R. M. of	0.5	0.3	0.5	0.4	0.3	0.4	0.3	0.3	0.2	0.3
Dufferin Co.	2.6	2.4	2.3	3.0	2.7	2.9	3.1	3.0	3.1	2.7
Durham, R. M. of	10.2	11.4	11.0	11.8	12.6	13.2	12.2	11.7	10.0	8.3
Elgin Co.	0.7	0.6	0.5	0.6	0.7	0.8	0.7	0.6	0.6	0.6
Essex Co.	2.0	2.2	1.9	1.9	1.9	1.7	1.6	1.7	1.6	1.7
Frontenac Co.	1.4	1.3	1.6	2.0	2.2	2.4	2.1	2.1	2.9	2.6
Greater Sudbury, City of	2.3	1.8	2.3	1.7	2.2	2.8	2.9	2.7	3.2	2.1
Grey Co.	2.5	2.6	2.6	3.1	3.2	3.7	3.4	3.2	3.3	2.9
Haldimand Co.	----	1.5	1.9	1.8	1.6	2.0	1.8	1.4	1.3	1.1
Haldimand-Norfolk, R. M. of	2.0	----	----	----	----	----	----	----	----	----
Haliburton Co.	----	----	----	----	----	----	----	0.5	0.6	0.5
Halton, R. M. of	15.5	15.8	12.1	10.7	11.4	10.9	9.6	9.5	8.5	6.9
Hamilton, City of	6.3	6.0	5.5	6.0	6.3	5.6	6.2	5.6	5.7	4.9
Hastings Co.	2.0	2.0	2.1	2.4	2.3	2.1	2.3	2.6	3.0	3.4
Huron Co.	2.7	3.0	2.7	2.8	2.5	2.6	2.7	2.9	2.9	3.0
Kawartha Lakes, City of	----	6.4	6.4	6.7	6.8	6.8	6.5	5.9	5.5	4.5
Lambton Co.	0.5	0.5	0.7	0.4	0.5	0.7	0.7	0.5	0.6	0.5
Lanark Co.	1.6	1.7	2.0	2.4	2.3	2.3	2.3	2.3	1.9	2.5
Leeds & Grenville Co.'s	3.0	2.3	2.0	1.9	2.2	2.3	2.3	2.0	2.3	2.1
Lennox & Addington Co.	1.8	1.8	1.7	1.9	1.8	1.9	1.9	2.0	2.0	2.0
Manitoulin, District of	----	----	----	----	----	----	----	3.6	3.9	2.9
Middlesex Co.	6.4	6.0	5.4	5.6	6.2	6.2	5.6	5.2	4.8	4.3
Muskoka	----	----	----	----	----	----	----	2.1	2.1	2.3
Niagara, R. M. of	4.6	4.6	4.9	4.6	4.7	4.5	5.1	4.0	4.0	3.9
Nipissing, District of	----	----	----	----	----	----	----	1.3	1.2	1.2
Norfolk Co.	----	0.4	0.4	0.4	0.5	0.4	0.5	0.5	0.5	0.4
Northumberland Co.	3.2	3.1	3.0	3.4	3.3	3.5	3.4	3.4	3.0	2.8
Ottawa, City of	10.7	10.1	10.7	10.0	9.9	10.6	11.1	11.4	11.2	11.0
Oxford Co.	5.4	4.9	4.8	4.9	4.8	5.0	5.4	7.1	5.8	4.9
Parry Sound, District of	----	----	----	----	----	----	----	1.5	1.8	2.4
Peel, R. M. of	5.2	5.2	4.3	4.5	5.3	5.1	5.3	4.7	3.8	3.6
Perth Co.	2.1	2.0	2.1	2.0	2.0	2.0	2.4	2.1	1.9	1.9
Peterborough Co.	2.2	2.4	3.2	2.5	2.5	2.7	2.6	2.9	3.2	3.2
Prescott & Russell Co.'s	1.4	1.4	1.3	1.4	1.4	1.7	1.5	1.4	1.7	1.7
Prince Edward Co.	2.1	2.0	2.1	2.2	2.2	2.4	2.2	2.4	2.4	1.6
Renfrew Co.	1.5	1.2	1.8	1.6	1.7	1.3	1.9	2.3	2.1	2.3
Simcoe Co.	9.3	10.6	11.4	11.8	12.7	12.6	13.4	12.0	12.1	10.5
Stormont, Dundas & Glengarry Co.'s	3.0	2.7	2.6	2.7	3.5	3.0	3.4	2.8	3.2	3.4
Sudbury, District of	0.5	1.0	0.6	0.6	0.6	0.8	0.8	1.7	1.1	0.8
Thunder Bay, District of	----	----	----	----	----	----	----	0.3	0.7	1.0
Victoria Co.	7.1	----	----	----	----	----	----	----	----	----
Waterloo, R. M. of	7.7	8.2	7.8	8.0	9.5	8.2	9.3	8.2	7.9	7.1
Wellington Co.	8.4	8.9	8.9	9.1	9.1	8.3	8.8	9.0	8.0	6.6
York, R. M. of	3.0	2.4	2.4	2.0	1.9	1.0	1.0	0.7	1.1	1.0
TOTAL	146.0	144.9	141.8	143.2	149.8	149.8	151.9	158.8	153.8	139.0

Note: As of January 1, 2001 Victoria County is now known as The City of Kawartha Lakes.

As of January 1, 2001 Haldimand-Norfolk has been split into two different counties; Haldimand County and Norfolk County.

Totals may not equal due to rounding.

Table 4

**LICENCE PRODUCTION IN 2009
THE TOP TEN PRODUCING MUNICIPALITIES
(Rounded to nearest million tonnes)**

Municipality(1)	County/Region	2009 Production	Production(2)				
			2008	2007	2006	2005	2004
1 City of Ottawa	City of Ottawa	11.0	11.2	11.0	11.1	10.6	9.9
2 City of Hamilton	City of Hamilton	4.9	5.7	5.6	6.2	5.6	6.3
3 City of Kawartha Lakes	City of Kawartha Lakes	4.5	5.5	5.9	6.5	6.8	6.8
4 Municipality of Clarington	Durham	4.1	4.6	5.2	5.0	5.8	5.3
5 Town of Milton	Halton	3.7	4.5	4.4	4.6	5.0	5.6
6 Town of Caledon	Peel	3.6	3.8	4.7	5.3	5.1	5.3
7 Puslinch Township	Wellington County	3.4	3.9	4.2	4.7	5.0	5.2
8 Township of North Dumfries	Waterloo	3.4	3.7	4.2	5.0	4.1	4.4
9 Township of Uxbridge	Durham	3.0	3.7	4.6	5.4	5.3	5.5
10 Township of Zorra	Oxford	2.8	3.6	4.1	3.9	3.9	3.6
Total		44.4	50.2	53.9	57.7	57.2	57.9

Notes:

1. Municipalities are ranked in order of their licenced production for 2009.
2. Historical data are for current year's Top Ten Producing Municipalities.
3. Pre 2009 historical data for Table 4 has been corrected effective February 24, 2011.
This PDF version of Table 4 should be relied upon over previously printed versions.

Table 5

**NUMBER AND TYPE OF AGGREGATE LICENCES
(Reported by MNR District)**

District	No. of Licences	Category		Type of Operation			
		Class A	Class B	Pit	Quarry	Pit & Quarry	Underwater
Aurora (GTA)	147	126	21	131	16	0	0
Aylmer	309	243	66	293	10	6	0
Bancroft	270	99	171	194	33	43	0
Guelph (Cambridge)	452	385	67	414	35	3	0
Kemptville	479	279	200	335	121	23	0
Midhurst	471	356	115	415	51	5	0
North Bay	153	61	92	123	6	24	0
Parry Sound	306	120	186	197	11	98	0
Pembroke	240	75	165	219	11	10	0
Peterborough (Tweed)	536	289	247	433	86	17	0
Sault Ste. Marie	96	53	43	79	5	12	0
Sudbury	241	126	115	173	19	49	0
Thunder Bay	60	24	36	50	3	7	0
Wawa	2	2	0	1	0	1	0
TOTAL	3,762	2,238	1,524	3,057	407	298	0

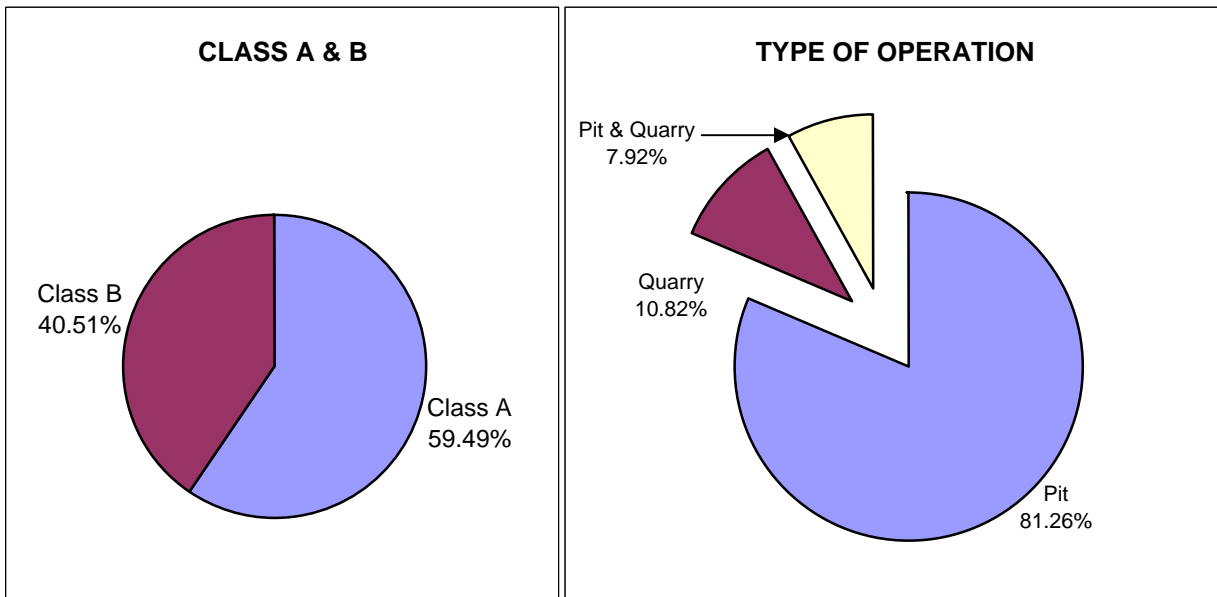
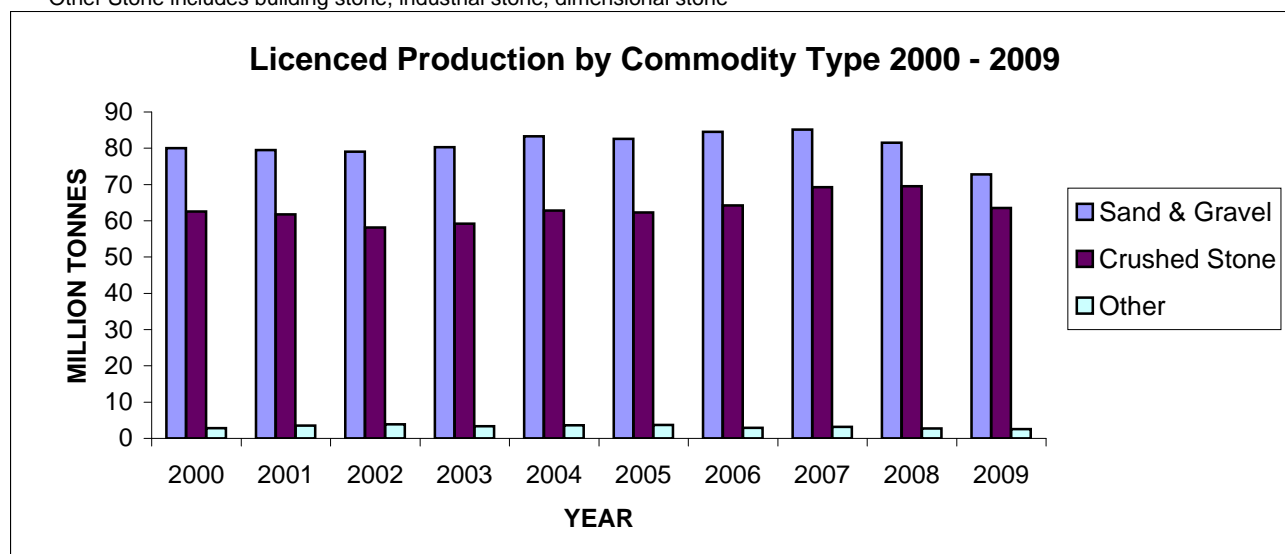


Table 6

**2009 LICENCED AGGREGATE PRODUCTION
BY COMMODITY TYPE
(Reported by MNR District)**

District	Total	Sand & Gravel	Crushed Stone	Clay/ Shale	Other Stone
Aurora (GTA)	19,653,952.44	10,626,131.02	8,333,664.18	546,083.87	148,073.37
Aylmer	12,734,077.41	9,643,540.05	3,057,245.09	33,047.47	244.80
Bancroft	3,438,167.13	780,236.56	2,548,609.06	1,272.70	108,048.81
Guelph (Cambridge)	30,034,593.01	19,164,712.01	10,787,853.84	82,027.16	0.00
Kemptville	20,580,628.94	3,947,707.60	15,399,106.33	10,455.50	1,223,359.51
Midhurst	17,545,984.12	11,322,528.52	5,963,147.61	41,405.34	218,902.65
North Bay	1,474,804.92	886,466.14	579,361.51	0.00	8,977.27
Parry Sound	4,456,510.28	2,505,683.72	1,924,082.39	864.18	25,879.99
Pembroke	2,458,921.93	1,885,273.07	566,606.03	0.00	7,042.83
Peterborough	17,114,398.99	7,309,566.50	9,777,183.55	6,319.80	21,329.14
Sault Ste. Marie	2,593,070.02	1,515,296.41	1,075,891.56	0.00	1,882.05
Sudbury	5,780,535.87	2,342,298.49	3,379,956.97	46,990.17	11,290.24
Thunder Bay	972,519.50	859,758.52	112,414.28	336.70	10.00
TOTAL	138,838,164.56	72,789,198.61	63,505,122.40	768,802.89	1,775,040.66

Note: Totals may not equal due to rounding - Reported in metric tonnes
Other Stone includes building stone, industrial stone, dimensional stone



**Yearly Production for Aggregate Licences
(in Million Tonnes)**

	Total	Sand & Gravel	Crushed Stone	Other
2000	145.49	80.07	62.57	2.85
2001	144.76	79.46	61.76	3.54
2002	141.17	79.09	58.19	3.89
2003	142.91	80.30	59.25	3.36
2004	149.76	83.28	62.83	3.65
2005	148.59	82.62	62.27	3.70
2006	151.61	84.49	64.24	2.88
2007	157.56	85.17	69.24	3.15
2008	153.80	81.55	69.52	2.73
2009	138.84	72.79	63.51	2.54

Table 7

**2009 AGGREGATE PERMIT PRODUCTION
BY COMMODITY TYPE
(Reported by MNR District)**

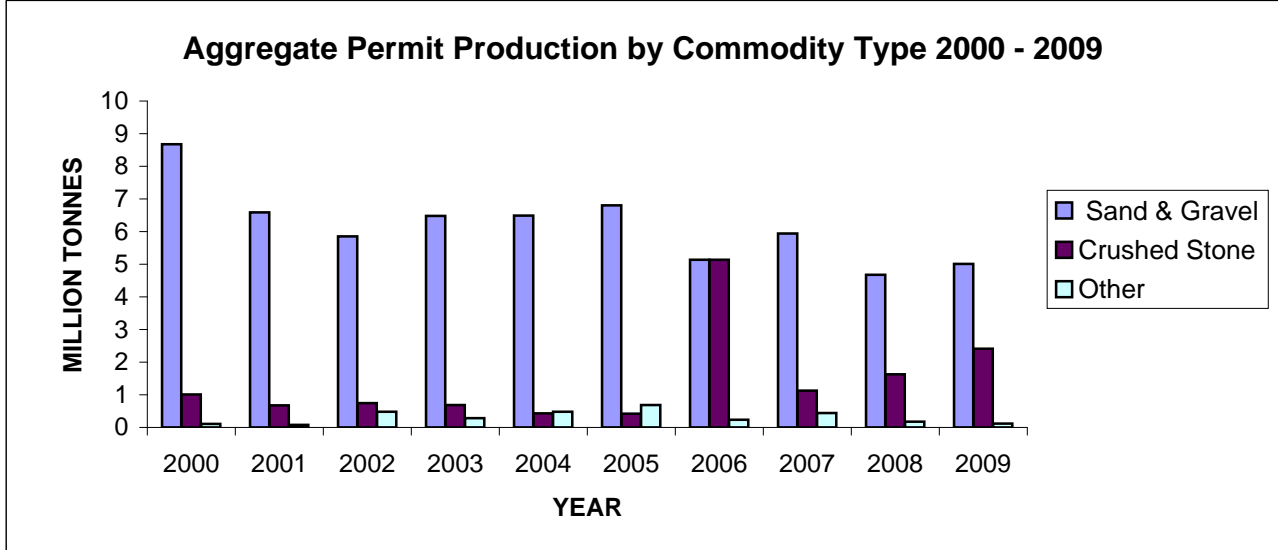
Region/District	Total Production	Sand & Gravel	Crushed Stone	Clay/Shale	Other Stone
NORTHEAST					
Chapleau	204,500.54	204,500.54	-	-	-
Cochrane	94,184.97	86,172.77	7,849.00	163.20	-
Hearst	381,866.83	261,990.35	114,650.00	5,226.48	-
Kirkland Lake	247,934.26	210,001.07	37,933.19	-	-
North Bay	276,499.09	248,353.09	25,053.85	-	3,092.15
Sault Ste. Marie	264,411.72	264,411.72	-	-	-
Sudbury	1,039,732.05	301,863.95	730,029.01	-	7,839.09
Timmins	486,614.50	486,614.50	-	-	-
Wawa	185,574.19	178,489.71	7,084.48	-	-
Sub-Total	3,181,318.15	2,242,397.70	922,599.53	5,389.68	10,931.24
NORTHWEST					
Dryden	674,456.72	385,530.72	287,770.00	-	1,156.00
Fort Frances	419,840.91	352,086.35	65,933.80	160.48	1,660.28
Kenora	142,126.45	112,916.41	16,540.00	-	12,670.04
Nipigon	478,164.22	351,560.29	126,021.96	-	581.97
Red Lake	72,613.37	70,798.88	1,814.49	-	-
Sioux Lookout	210,192.44	209,355.32	100.00	-	737.12
Thunder Bay	238,905.22	210,185.12	28,680.00	-	40.10
Sub-Total	2,236,299.33	1,692,433.09	526,860.25	160.48	16,845.51
SOUTHCENTRAL					
Algonquin Park	-	-	-	-	-
Aurora (GTA)	-	-	-	-	-
Aylmer	3,860.99	3,860.99	-	-	-
Bancroft	281,468.22	70,683.39	121,768.68	6,780.36	82,235.79
Guelph (Cambridge)	-	-	-	-	-
Kemptville	1,669.28	1,669.28	-	-	-
Midhurst	-	-	-	-	-
Parry Sound	1,473,547.87	817,878.30	654,615.57	-	1,054.00
Pembroke	183,315.71	183,315.71	-	-	-
Peterborough (Tweed)	184,944.25	-	184,944.25	-	-
Sub-Total	2,128,806.32	1,077,407.67	961,328.50	6780.36	83,289.79
TOTAL	7,546,423.80	5,012,238.46	2,410,788.28	12,330.52	111,066.54

Note: Totals may not equal due to rounding - Reported in metric tonnes

Other Stone includes building stone, industrial stone, dimensional stone

Table 8

**2009 AGGREGATE PERMIT PRODUCTION
BY COMMODITY TYPE
(Reported By Year)**



**Yearly Production for Aggregate Permits
(in Million Tonnes)**

	Total	Sand & Gravel	Crushed Stone	Other
2000	9.80	8.68	1.01	0.11
2001	7.35	6.59	0.68	0.08
2002	7.08	5.85	0.75	0.48
2003	7.45	6.48	0.69	0.28
2004	7.40	6.49	0.43	0.48
2005	7.91	6.80	0.42	0.69
2006	10.52	5.14	5.14	0.24
2007	7.51	5.94	1.13	0.44
2008	6.49	4.68	1.63	0.18
2009	7.54	5.01	2.41	0.12

Table 9

**2009 AGGREGATE PERMIT PRODUCTION
BY COMMODITY TYPE
(Reported by CAC* Geographic Areas)**

Area	Total	Sand & Gravel	Crushed Stone	Clay/ Shale	Other Stone
Southwest (1)	3,861	3,861	0	0	0
Peninsula (2)	0	0	0	0	0
West Central (3)	0	0	0	0	0
GTA (4)	0	0	0	0	0
East Central (5)	454,354	57,521	306,763	6,780	83,290
East (6)	185,154	185,154	0	0	0
Northeast (7)	4,186,855	2,599,622	1,574,425	5,390	7,419
Northwest (8)	2,716,200	2,166,081	529,601	160	20,358
TOTAL	7,546,424	5,012,238	2,410,788	12,330	111,067

Note: Totals may not equal due to rounding - Reported in metric tonnes

Other Stone includes building stone, industrial stone, dimensional stone

*CAC - Cement Association of Canada formerly CPCA - Canadian Portland Cement Association

**2009 AGGREGATE LICENCE PRODUCTION
BY COMMODITY TYPE
(Reported by CAC* Geographic Areas)**

Area	Total	Sand & Gravel	Crushed Stone	Clay/ Shale	Other Stone
Southwest (1)	17,169,623	13,292,761	3,816,527	60,090	245
Peninsula (2)	11,811,620	2,160,914	9,613,580	37,126	0
West Central (3)	31,333,412	24,677,106	6,378,140	59,263	218,903
GTA (4)	19,662,202	10,634,131	8,333,664	546,084	148,323
East Central (5)	18,305,527	8,267,712	9,895,386	4,890	137,539
East (6)	27,616,620	6,597,631	19,763,407	13,197	1,242,385
Northeast (7)	9,361,952	4,781,735	4,506,648	47,815	25,753
Northwest (8)	3,577,208	2,377,209	1,197,770	337	1,892
TOTAL	138,838,165	72,789,199	63,505,122	768,803	1,775,041

Note: Totals may not equal due to rounding - Reported in metric tonnes

Other Stone includes building stone, industrial stone, dimensional stone

*CAC - Cement Association of Canada formerly CPCA - Canadian Portland Cement Association

Table 10

**REHABILITATION OF
LICENCED AGGREGATE SITES IN 2009
(Reported by MNR District)**

District	Total No. of Licences	Total Licenced Area	Original Disturbed Area	New Disturbed Area	New Rehab. Area	Total Disturbed Area
Aurora (GTA)	147	8,333.08	3,051.51	48.04	98.53	3,001.02
Aylmer	309	8,514.17	2,905.83	113.68	107.85	2,911.66
Bancroft	270	9,362.74	1,050.27	29.50	8.12	1,071.66
Guelph (Cambridge)	452	16,292.26	4,671.57	135.46	50.54	4,756.48
Kemptville	479	14,180.87	4,076.17	152.80	46.37	4,182.61
Midhurst	471	15,047.81	3,522.55	134.86	61.31	3,596.10
North Bay	153	7,205.27	921.82	25.39	17.58	929.63
Parry Sound	306	9,774.14	1,873.39	48.28	36.76	1,884.91
Pembroke	240	5,986.06	779.45	39.32	38.02	780.75
Peterborough (Tweed)	536	15,147.93	3,684.94	109.67	31.64	3,762.97
Sault Ste. Marie	96	4,050.61	620.60	40.54	1.03	660.11
Sudbury	241	17,054.59	1,442.36	41.72	17.56	1,466.52
Thunder Bay	60	3,669.38	219.99	5.77	1.25	224.51
Wawa	2	46.87	0.00	0.00	0.00	0.00
TOTAL	3,762	134,665.78	28,820.46	925.03	516.56	29,228.94

Note: Areas reported in hectares

These statistics are compiled from information supplied by licencees and are not independently checked for accuracy.

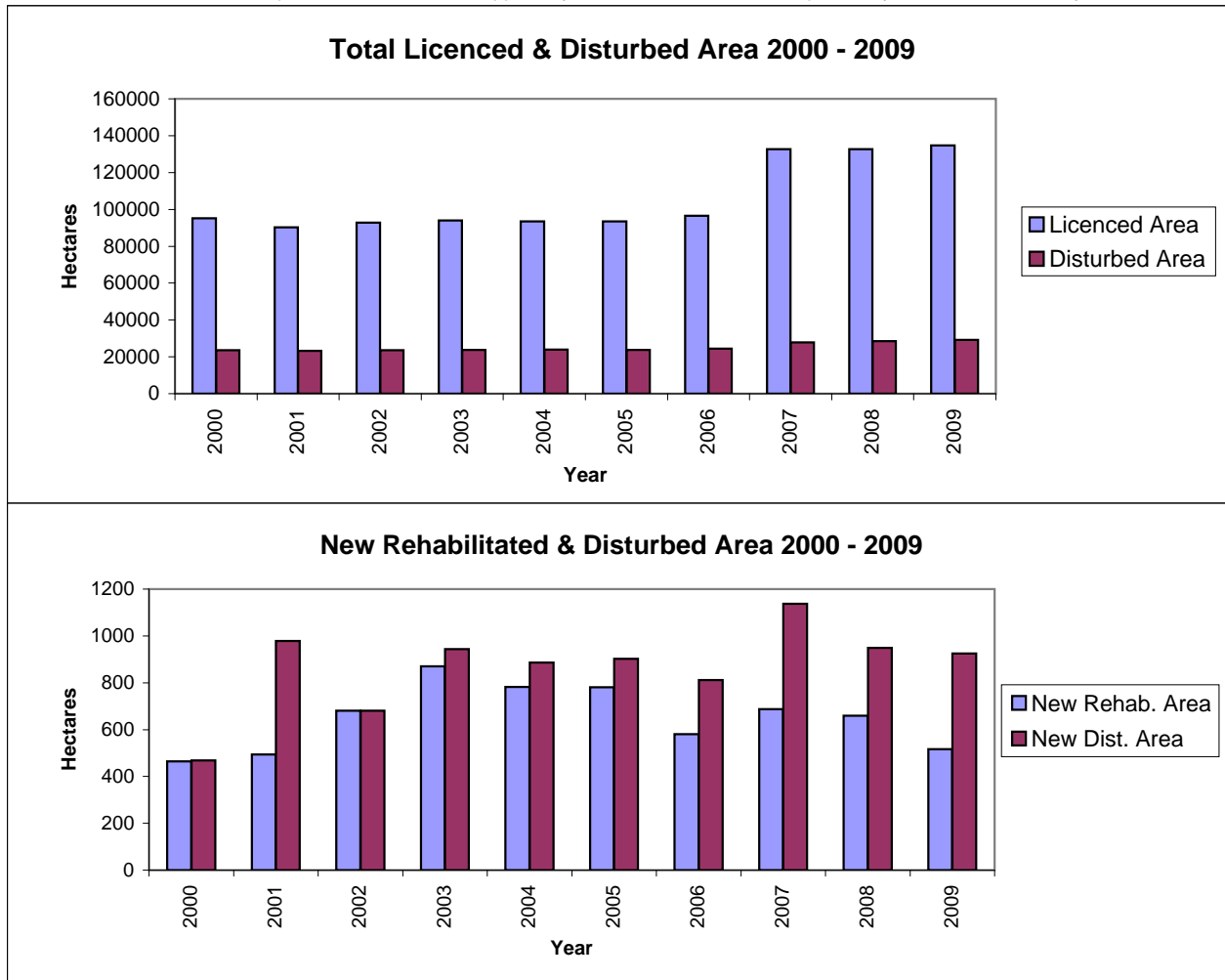


Table 11

**NUMBER AND TYPE OF AGGREGATE PERMITS
(Reported by MNR District)**

Region/District	Total Hectarage	Total No. of Permits	Pit	Quarry	Pit & Quarry	Underwater
NORTHEAST						
Chapleau	1,347.32	196	194	2	0	0
Cochrane	2,602.18	127	112	9	6	0
Hearst	3,756.77	183	160	19	4	0
Kirkland Lake	2,032.31	161	150	9	2	0
North Bay	2,583.01	195	167	22	6	0
Sault Ste. Marie	946.74	109	104	3	2	0
Sudbury	4,655.68	177	145	21	11	0
Timmins	2,109.18	172	160	9	3	0
Wawa	2,646.31	269	257	8	4	0
Sub-Total	22,679.50	1,589	1,449	102	38	0
NORTHWEST						
Dryden	2,274.42	214	197	9	8	0
Fort Frances	2,319.45	238	221	4	13	0
Kenora	2,991.44	207	163	26	18	0
Nipigon	3,241.23	251	220	16	15	0
Red Lake	1,206.25	84	80	3	1	0
Sioux Lookout	1,559.08	85	82	2	1	0
Thunder Bay	3,306.94	157	128	21	8	0
Sub-Total	16,898.81	1,236	1,091	81	64	0
SOUTHCENTRAL						
Algonquin Park	0.00	0	0	0	0	0
Aurora (GTA)	0.00	0	0	0	0	0
Aylmer	0.10	1	0	0	0	1
Bancroft	1,368.08	73	58	15	0	0
Guelph (Cambridge)	0.00	1	0	0	0	1
Kemptville	2.00	1	1	0	0	0
Parry Sound	942.36	91	67	18	6	0
Pembroke	205.58	44	44	0	0	0
Peterborough (Tweed)	31.40	2	0	1	1	0
Sub-Total	2,549.52	213	170	34	7	2
TOTAL	42,127.83	3,038	2,710	217	109	2

APPENDIX A

GLOSSARY OF TERMS

For actual definitions, please refer to the Aggregate Resources Act.

Active Licence

A licence that has been issued, being transferred, or under suspension at the end of the calendar year.

Aggregate

Includes sand, gravel, limestone, dolostone, crushed stone, rock other than metallic ores, and other prescribed material.

Aggregate Permit

A permit for a pit or quarry issued under the Aggregate Resources Act allowing for the excavation of aggregate that is the property of the Crown, on land where the surface rights are the property of the Crown, or from land under water.

ALPS

The Aggregate Licence and Permit System (ALPS) is an automated data base that facilitates the management of mineral aggregate production and related information, for individual licences, aggregate permits and wayside permits across the province.

Building Dimension

A slab or block of rock, flagstone if foliated and dimension stone if massive, generally rectangular, and cut to specified measurements for ornamental surfacing in buildings or other construction applications.

Clay/Shale

Clay is a fine-grained, natural, earthy material composed primarily of hydrous aluminum silicates. It is plastic when moist and hardens when dried. Shale is fine-grained sedimentary laminated rock predominantly composed of clay grade and other fine minerals.

Class A Licence

A licence under the Aggregate Resources Act to allow excavation of more than 20,000 tonnes of aggregate annually from a pit or quarry within parts of Ontario that have been designated under the Aggregate Resources Act.

Class B Licence

A licence under the Aggregate Resources Act to allow excavation of 20,000 tonnes or less of aggregate annually from a pit or quarry within parts of Ontario that have been designated under the Aggregate Resources Act.

Crown Land

Ownership of land which is vested in the Crown or owned by the Province of Ontario.

Crushed Stone

Rock or stone mechanically crushed to specified sizes and grading.

Designated Area

An area of the Province identified by regulation under the Aggregate Resources Act where a person requires a licence for the excavation of aggregate from private land.

Disturbed Area

An area within a site that has been, or is being excavated to operate a pit or quarry, and has not been rehabilitated.

Gravel

Small stones and pebbles or a mixture of sand and small stones. More specifically, fragments of rock worn by the action of air and water, larger and coarser than sand. MTO specifications define gravel as unconsolidated granular material greater than 4.75mm.

Housing Starts

The number of housing units started where construction has advanced to 100 per cent of footings. In case of multiple dwellings, a "start" implies the commencement of individual structures.

Inactive Licence

A licence that has been revoked or surrendered prior to the end of the calendar year.

Licence

A licence for a pit or quarry issued under the Aggregate Resources Act allowing for the extraction of aggregate in designated areas.

Licensed Area

A specific area for which a licence has been issued for the extraction of mineral aggregates under the Aggregate Resources Act.

Pit

Land or land under water from which unconsolidated aggregate is being or has been excavated, and has not been rehabilitated.

Private Land

Land owned by an individual or corporation, as opposed to land which is owned by the Crown.

Progressive Rehabilitation

As per the requirements of the Aggregate Resources Act, sequential rehabilitation completed within reasonable time over disturbed land from which aggregate has been extracted. The rehabilitation is carried out according to the Act, the regulations, the site plan, and the conditions of the licence or permit during the period that aggregate is being extracted.

Pits & Quarries Control Act

An Act to manage and regulate mineral aggregate extraction in Ontario. The Act had been automatically repealed and replaced by the Aggregate Resources Act as of January 1, 1990.

Quarry

Land or land under water from which consolidated rock is or has been excavated and the site has not been rehabilitated.

Rehabilitation

To treat the land from which aggregate has been excavated to a pre-excitation condition or use, or to a condition compatible with adjacent land.

Royalty

A payment made to the Crown in recognition of the extraction of aggregates owned by the Crown. Under the Aggregate Resources Act, the royalty is set at a minimum of 25 cents per tonne. The Minister may set a higher rate or may allow exemption.

Sand

Any hard granular rock material finer than gravel and coarser than dust. MTO specifications define sand as granular material ranging in size from .075mm to 4.75 mm.

Wayside Permit

A permit issued to a public authority or a person who has a contract with a public authority for a temporary road project or an urgent project for which no alternative source of aggregate is available under licence or permit. A wayside permit expires 18 months from the date of issue or upon completion of the project, whichever comes first.

APPENDIX B

**HISTORICAL DESIGNATION OF PRIVATE LAND UNDER THE
PITS AND QUARRIES CONTROL ACT AND
THE AGGREGATE RESOURCES ACT**

(by Geographic Twp)

Designations under the Pits and Quarries Control Act (1971-1989)

DECEMBER 19, 1971

Adjala	Euphrasia	Nottawasaga
Albemarle	Flamborough East	Osprey
Albion	Flamborough West	Pelham
Amabel	Grantham	Reach
Ancaster	Grimsby North	Saltfleet
Artemesia	Holland	Stamford
Barton	Keppel	St. Edmunds
Beverly	Lindsay	St. Vincent
Caledon	London	Sydenham
Chinguacousy	Louth	Thorold
Clinton	Melancthon	Toronto Gore
Collingwood	Mono	Trafalgar
Derby	Mulmur	Westminster
Eastnor	Nassagaweya	West Nissouri
Erin	Nelson	Whitby
Esquesing	Niagara	Whitchurch

MARCH 3, 1972

Brock	Lobo	Pickering
East Whitby	Markham	Toronto
Gloucester	Nepean	Vaughan
Hallowell	Osgoode	

MAY 9, 1972

Brantford	Pittsburgh	South Dumfries
Guelph	Puslinch	Waterloo
Kingston	North Dumfries	

AUGUST 15, 1973

Anderdon	Dereham	Humberstone
Bertie	Dunn	Huntley
Blenheim	Eramosa	King
Brighton	Fitzroy	Malden
Clarke	Gosfield South	Manvers
Colchester North	Gosfield North	March
Colchester South	Haldimand	Mersea
Cramahe	Hamilton	Murray
Crowland	Harwich	Nichol
Darlington	Hope	North Cayuga

North Gower
North Oxford
Oneida
Orillia
Oro
Pilkington
Raleigh
Romney

Sidney
Sunnidale
Thurlow
Tilbury East
Tyendinaga
Uxbridge
Vespra
Walpole

Wellesley
West Oxford
Willoughby
Wilmot
Woodhouse
Woolwich
Yarmouth

FEBRUARY 15, 1974

Delaware
North Dorchester

MAY 17, 1974

Pelee

MAY 1, 1975

Alnwick
Amaranth
Arran
Arthur
Asphodel
Balfour
Bayham
Belmont
Bexley
Biddulph
Binbrook
Blandford
Blanshard
Blezard
Bowell
Broder
Burford
Caistor
Camden
Capreol
Cartwright
Cavan
Charlotteville
Chatham
Creighton
Cumberland
Denison
Dieppe
Dill
Douro
Dover
Dowling
Drury

Dryden
Dummer
East York
East Garafraxa
East Nissouri
East Luther
East Gwillimbury
East Oxford
East Zorra
Eldon
Emily
Ennismore
Essa
Etobicoke
Fairbank
Falconbridge
Fenelon
Flos
Gainsborough
Garson
Georgina
Glanford
Glenelg
Goulburn
Graham
Hanmer
Harvey
Houghton
Howard
Hutton
Innisfil
Levack
Lorne

Louise
Lumsden
MacLennan
Maidstone
Malahide
Mara
Mariposa
Marlborough
Maryborough
Matchedash
McKim
Medonte
Middleton
Minto
Morgan
Moulton
Neelon
Norman
North Monaghan
North Walsingham
North Norwich
North Gwillimbury
North York
Oakland
Onondaga
Ops
Orford
Otonabee
Peel
Percy
Proton
Rainham
Rama

Rawden
Rayside
Rochester
Sandwich, East
Sandwich, West
Scarborough
Scott
Scugog
Seneca
Seymour
Sherbrooke
Smith
Snider
South Walsingham

South Cayuga
South Dorchester
South Grimsby
South Norwich
South Monaghan
Sullivan
Tay
Tecumseh
Thorah
Tilbury, North
Tilbury, West
Tiny
Torbolton
Tosorontio

Townsend
Trill
Tuscarora
Verulam
Wainfleet
Waters
West Luther
West Garafraxa
West Gwillimbury
West Zorra
Windham
Wisner
York
Zone

APRIL 6, 1976

Great LaCloche Island
Little LaCloche Island

AUGUST 27, 1976

Avenge
Bosanquet
Carden

Korah
Parke
Prince

Rankin
St. Mary's
Tarentorus

JANUARY 1, 1981

Adelaide
Aldborough
All of the County of Perth
All of the County of Huron
All of the County of Lanark
Ameliasburgh
Athol
Bentinck
Brant
Brooke
Bruce
Carrick
City of Belleville
Culross
Dawn
Dunwich
E. Williams
Egremont
Elderslie
Elzevir and Grimsthorpe

Enniskillen
Euphemia
Exfrid
Greenock
Hillier
Hungerford
Huntingdon
Huron
Kincardine
Kinloss
Madoc
Marmora and Lake
McGillivray
Moore
Mosa
Normanby
North Marysburgh
Plympton
Sarnia
Saugeen

Separated Town of Trenton
Sombra
Sophiasburgh
South Marysburgh
Southwold
Town of Deseronto
Tudor
United Counties of Prescott
and Russell
United Counties of Stormont,
Dundas & Glengarry
United Counties of Leeds and
Grenville
Villages of Deloro, Frankford,
Madoc, Marmora, Stirling
and Tweed
W. Williams
Walford
Warwich
Wyoming

JULY 1, 1984

Storrington

Designations under the Aggregate Resources Act (Jan. 1, 1990)

APRIL 1, 1992

Adolphustown
Amherst Island
Bedford
Camden East
Dalton
Digby
Ernestown

Howe Island
Laxton
Longford
Loughborough
North Fredericksburgh
Portland
Richmond

Somerville
South Fredericksburgh
Town of Napanee
Villages of Bath and
Newburgh
Wolfe Island

SEPTEMBER 1, 1993

Admaston
Alice and Fraser
Bagot and Blithfield
Bromley
City of Pembroke
Horton

McNab
Pembroke
Petawawa
Ross
Stafford

Towns of Arnprior and
Renfrew
Villages of Beachburg,
Braeside, Cobden and
Petawawa
Westmeath

JANUARY 1, 1998

Anderson
Appleby
Archibald
Aweres
Awrey
Baldwin
Burwash
Cartier
Cascaden
Casimir
Chesley Additional
Cleland
Cosby
Curtin
Delamere
Dennis
Deroche
Duncan
Dunnet
Eden
Fenwick
Fisher
Foster
Foy

Gaudette
Gough
Hagar
Hallam
Harrow
Harty
Haviland
Hawley
Hendrie
Henry
Herrick
Hess
Hilton
Hodgins
Hoskin
Hyman
Jarvis
Jennings
Jocelyn
Johnson
Kars
Kehoe
Laird
Laura

Ley
Loughrin
Macdonald
May
McKinnon
Meredith and Aberdeen
Additional
Merritt
Mongowin
Nairn
Pennefather
Ratter
Secord
Servos
Shakespeare
Shields
St. Joseph
Street
Tarbutt and Tarbutt
Additional
Tilley
Tilton
Tupper
VanKoughnet

DECEMBER 4, 1999

Village of Hilton Beach

JULY 22, 2004

Andre
Bostwick
Franchere
Groseilliers
Legarde

Levesque
Macaskill
Menzies
Michipicoten
Musquash

Rabazo
St. Germain
Warpula

Newly Designated Private Lands (Effective January 1, 2007)

1. Those parts of the County of Frontenac consisting of the townships of Central Frontenac and North Frontenac.
2. Those parts of the County of Renfrew consisting of,
 - a) the Township of Bonnechere Valley, the Township of Brudenell, Lyndoch and Raglan, the Township of Head, Clara and Maria, the Township of Killaloe, Hagarty and Richards, the Township of Madawaska Valley and the Township of North Algona Wilberforce;
 - b) the Township of Greater Madawaska, except the townships of Bagot and Blythfield; and
 - c) the towns of Deep River and Laurentian Hills.
3. Those parts of the County of Lennox and Addington consisting of,
 - a) the Township of Addington Highlands; and
 - b) the Township of Stone Mills, except the Township of Camden East.
4. Those parts of the County of Hastings consisting of,
 - a) the Town of Bancroft;
 - b) the townships of Carlow/Mayo, Faraday, Limerick and Wollaston;
 - c) the Municipality of Hastings Highlands; and
 - d) the Township of Tudor and Cashel, except the Township of Tudor.
5. Those parts of the County of Peterborough consisting of,
 - a) the Township of Galway-Cavendish-Harvey, except the Township of Harvey;
 - b) the Township of Havelock-Belmont-Methuen, except the Township of Belmont and the Town of Havelock; and
 - c) the Township of North Kawartha.
6. All of the County of Haliburton.
7. Those parts of the Territorial District of Nipissing consisting of,
 - a) the Town of Mattawa;
 - b) the City of North Bay;
 - c) the Municipality of West Nipissing;
 - d) the townships of Bonfield, Calvin, Chisholm, East Ferris, Mattawan, Papineau- Cameron and South Algonquin; and
 - e) the geographical townships of Airy, Anglin, Antoine, Ballantyne, Barron, Biggar, Bishop, Blyth, Boulter, Bower, Boyd, Bronson, Butler, Butt, Canisbay, Charlton, Clancy, Clarkson, Commanda, Deacon, Devine, Dickson, Eddy, Edgar, Finlayson, Fitzgerald, French, Freswick, Garrow, Gladman, Guthrie, Hammell, Hunter, Jocko, Lauder, Lyman, Lister, Lockhart, Master, McCraney, McLaughlin, McLaren, Merrick, Mulock, Niven, Notman, Olig, Osborne, Osler, Paxton, Peck, Pentland, Phelps, Poitras, Preston, Sproule, Stewart, Stratton, Thistle, White and Wilkes

8. All parts of the Territorial District of Parry Sound consisting of,
 - a) the townships of Armour, Carling, Joly, Machar, McKellar, McMurrich/Monteith, Nipissing, Perry, Ryerson, Seguin, Strong and The Archipelago;
 - b) the municipalities of Powassan, Magnetawan, McDougall, Callander and Whitestone;
 - c) the towns of Kearney and Parry Sound;
 - d) the villages of Burk's Falls, South River and Sundridge; and
 - e) the geographical townships of Bethune, Blair, Brown, East Mills, Gurd, Hardy, Harrison, Henvey, Laurier, Lount, McConkey, Mowat, Patterson, Pringle, Proudfoot, Shawanaga, Wallbridge and Wilson.
9. All parts of the Territorial District of Muskoka consisting of,
 - a) the towns of Bracebridge, Gravenhurst and Huntsville;
 - b) the townships of Georgian Bay, Lake of Bays and Muskoka Lakes; and
 - c) the District Municipality of Muskoka.
10. Those parts of the Territorial District of Sudbury consisting of,
 - a) the Municipality of French River, except the geographical townships of Cosby, Delamere and Hoskin;
 - b) the Township of Sables – Spanish River, except the geographical townships of Gough, Hallam, Harrow, May, McKinnon and Shakespeare;
 - c) the Town of Killarney;
 - d) the Municipality of Killarney;
 - e) those parts of the City of Greater Sudbury consisting of the geographical townships of Aylmer, Fraleck, Hutton, MacKelcan, Parkin, Rathburn and Scadding; and
 - f) the geographical townships of Bevin, Caen, Carlyle, Cox, Davis, Dunlop, Halifax, Humboldt, Janes, Kelly, Leinster, McCarthy, Munster, Porter, Roosevelt, Shibananing, Truman, Tyrone and Waldie.
11. All parts of the Territorial District of Manitoulin, except Great LaCloche Island and Little LaCloche Island.
12. Those parts of the Territorial District of Algoma consisting of,
 - a) the towns of Blind River, Bruce Mines and Thessalon;
 - b) the City of Elliot Lake;
 - c) the townships of The North Shore, Plummer Additional and Shedden;
 - d) the Municipality of Huron Shores; and
 - e) the geographical townships of Aberdeen, Boon, Bridgland, Brule, Cadeau, Curtis, Dablon, Daumont, Deagle, Gaiashk, Galbraith, Gerow, Gillmor, Grenoble, Hughes, Hurlburt, Hynes, Kane, Kincaid, Lamming, Laverendrye, Marne, McMahan, Montgomery, Morin, Nicolet, Norberg, Palmer, Parkinson, Patton, Peever, Plummer, Rix, Rose, Ryan, Slater, Smilsky, Wells, Whitman and Wishart.
13. Those parts of the Territorial District of Thunder Bay consisting of,
 - a) the City of Thunder Bay;
 - b) the Municipality of Neebing; and
 - c) the townships of Conmee, Dorion, Gillies, O'Conner, Oliver Paipoonge and Shuniah.

Please refer to the Revised Regulations of Ontario for accuracy.

CANADIAN PORTLAND CEMENT ASSOCIATION* GEOGRAPHIC AREAS

* Now CAC - Cement Association of Canada



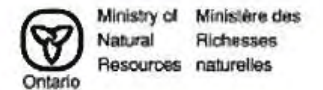
Area 1 Southwest	Area 2 Peninsula	Area 3 West Central	Area 4 GTA	Area 5 East Central	Area 6 East	Area 7 Northeast	Area 8 Northwest
Essex	Niagara	Bruce	Metro Toronto	Kawartha Lakes	Prescott & Russell	Nipissing	Algoma
Chatham-Kent	Brant	Grey	Peel	Peterborough	Leeds & Grenville	Parry Sound	Thunder Bay
Lambton	Haldimand	Simcoe	York	Haliburton	Stormont, Dundas, & Glengarry	Timiskaming	Kenora
Elgin	Norfolk	Dufferin	Durham	Northumberland	Frontenac	Cochrane	Rainy River
Middlesex	Hamilton	Wellington	Halton	Hastings	Greater Ottawa	Sudbury District	
Huron		Waterloo		Prince Edward	Lanark	Greater Sudbury	
Perth				Muskoka	Renfrew	Manitoulin	
Oxford					Lennox & Addington		

Designated Areas under the Aggregate Resources Act



Prepared by:
Aggregate and Petroleum Resources Section
Lands and Waters Branch
Ministry of Natural Resources
Oct, 2006

0 75 150 300 450 600 Kilometers



Steve Acorn (acting)
T: 705.941.5132
F: 705.949.6450
email: steve.acorn@ontario.ca
Sault Ste. Marie District

Ruth Steedman
T: 705.869.3806
F: 705.869.4620
email: ruth.steedman@ontario.ca
Sudbury District
Espanola Office

Vacant
T: 705.564.7855
F: 705.564.7879
email: @ontario.ca
Sudbury District

Remi Labreche
T: 705.475.5531
F: 705.475.5500
email: remi.labreche@ontario.ca
North Bay District

Justin Bryant
T: 613.332.3940 x231
F: 613.332.0608
email: justin.bryant@ontario.ca
Bancroft District

Mike Dumouchel
T: 613.732.5562
F: 613.732.2972
email: mike.dumouchel@ontario.ca
Pembroke District

Michael Machin
T: 613.732.5516
F: 613.732.2972
email: michael.machin@ontario.ca
Pembroke District

Butch Martelock
T: 613.258.8364
F: 613.258.3920
email: butch.martelock@ontario.ca
Kemptville District

Chris Bierman
T: 613.258.8264
F: 613.258.3920
email: christopher.bierman@ontario.ca
Kemptville District

Corey Young
T: 705.856.4751
F: 705.856.7511
email: corey.young2@ontario.ca
Wawa District

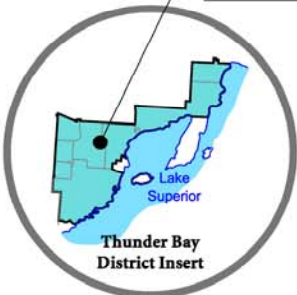


Sid Larson
T: 705.773.4233
F: 705.746.8828
email: sid.larson@ontario.ca
Parry Sound District

Jeff Schosser
T: 705.646.5526
F: 705.645.8372
email: jeff.schosser@ontario.ca
Parry Sound District
Bracebridge Office

Paul Cutmore
T: 705.755.3110
F: 705.755.3125
email: paul.cutmore@ontario.ca
Peterborough District

Colin Holvi
T: 807.475.1175
F: 807.475.1527
email: colin.holvi@ontario.ca
Thunder Bay District



Craig Laing
T: 705.725.7532
F: 705.725.7584
email: craig.laing@ontario.ca
Midhurst District

Dave Munro
T: 519.371.8470
F: 519.372.3305
email: dave.munro@ontario.ca
Midhurst District
Owen Sound Office

Vacant
T: 519.482.3891
F: 519.482.5031
email: @ontario.ca
Guelph District
Huron/Perth Office

Jason Bellegem
T: 705.755.3109
F: 705.755.3125
email: jason.bellegem@ontario.ca
Peterborough District

Chris Verschuren
T: 613.531.5729
F: 613.531.5730
email: chris.verschuren@ontario.ca
Peterborough District
Kingston Office

Cathy Douglas
T: 905.713.7396
F: 905.713.7361
email: cathy.douglas@ontario.ca
Aurora District

Alex Smith
T: 905.713.7388
F: 905.713.7361
email: alex.smith@ontario.ca
Aurora District

Stephen Douglas
T: 519.773.4716
F: 519.773.9014
email: stephen.douglas@ontario.ca
Aylmer District

Chris Black (Acting)
T: 519.773.4747
F: 519.773.9014
email: chris.black@ontario.ca
Aylmer District

Jason McLay
T: 519.826.4927
F: 519.826.4929
email: jason.mclay2@ontario.ca
Guelph District

Diane Schwier
T: 519.826.4930
F: 519.826.4929
email: diane.schwier@ontario.ca
Guelph District



Scale
0 25km 50km 100km
metric

Compiled by MHBC Planning with the cooperation and assistance of the Ministry of Natural Resources Aggregate Resources Program staff & TOARC (January 2011)

Aggregate Officers of Ontario

AGGREGATE RESOURCES ACT DESIGNATED AREAS

