



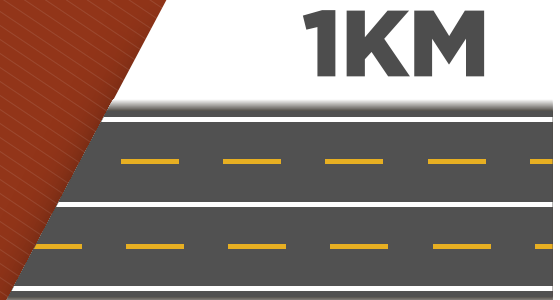
AGGREGATE RESOURCES STATISTICS IN ONTARIO

PRODUCTION STATISTICS 2015

DID YOU KNOW?

1,760

TRUCKLOADS

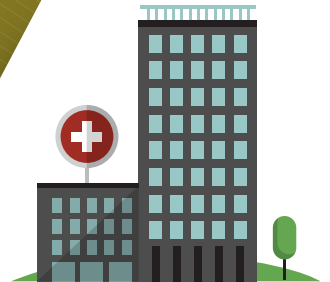


1KM

1 km of 4-lane highway

3,760

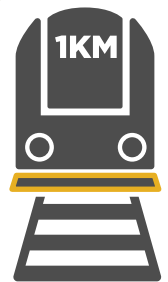
TRUCKLOADS



A 32,000m² hospital

4,560

TRUCKLOADS



1 km of subway line

14 TONNES



Every Ontarian uses
14 TONNES of stone,
sand and gravel each year.

AGGREGATE RESOURCES STATISTICS IN ONTARIO

PRODUCTION STATISTICS

2015

Prepared by

The Ontario Aggregate Resources Corporation

TABLE OF CONTENTS

Overview	1
----------------	---

TABLES AND GRAPHS

1. Aggregate Production in Ontario 2003-2015	2
2. Licence and Wayside Permit Production by Lower Tier Municipality	3
3. Licence and Wayside Permit Production by Upper Tier Municipality	11
4. The Top 10 Producing Municipalities	12
5. Number and Type of Aggregate Licences	13
6. Licenced Aggregate Production by Commodity Type (MNRF Districts)....	14
7. Aggregate Permit Production by Commodity Type (MNRF Districts)	15
8. Aggregate Permit Production by Commodity Type (by year)	16
9. Aggregate Permit & Licence Production (CAC Geographic Areas)	17
10. Rehabilitation of Licenced Aggregate Sites	18
11. Number and Type of Aggregate Permits	19

APPENDICES

- A. Glossary of Terms
- B. Historical Designation of Private Land under the Pits and Quarries Control Act and the Aggregate Resources Act
- C. CPCA (now CAC) Geographic Areas
- D. Map of Areas Designated under the Aggregate Resources Act
- E. Listing of MNRF Aggregate Officers of Ontario

Additional copies of this report may be obtained at a cost of \$5.00 each to cover preparation and postage from:

The Ontario Aggregate Resources Corporation
1001 Champlain Avenue, Suite 103
Burlington, ON L7L 5Z4
Toll Free 1-866-308-6272
or Telephone (905) 319-7424
or Fax (905) 319-7423

Cette publication spécialisée n'est disponible qu'en anglais

For internal use only.

*In order for TOARC to better meet the needs of those using this publication,
we welcome any comments or suggestions.*

You may send your comments/suggestions to the attention of John Dorlas,
Database Administrator at the above address or fax number or contact him directly via
email, jcdorlas@toarc.com

AGGREGATE RESOURCES STATISTICS IN ONTARIO

Overview

Aggregate resources are used in the everyday lives of all Ontario residents, and make up an integral part of our roads, sidewalks, sewers, subway tunnels and airports, as well as our homes, offices, hospitals, schools and shopping centres. On average, Ontarians use about 14 tonnes of aggregate per person per year.

The aggregate industry plays a foundational role within the Ontario economy. The economic activity generated by the industry begins with the aggregate production itself but also feeds industries which receive and use the raw materials: including cement and concrete products, other aggregate-based products (asphalt, chemical, clay, glass, etc.) and construction.

In 2015, there were 3,666 licences for pits and quarries on private land in areas designated under the Aggregate Resources Act (refer to Appendix D – Map of Areas Designated), 2,644 aggregate permits on Crown land and 1 wayside permit.

Aggregate Production

Overall production of mineral aggregates in 2015 totaled approximately 161 million tonnes, up 8 million tonnes or 5.2% from the previous year. Production from licenced operations was up 7 million tonnes or 4.9% compared to 2014. Forestry Aggregate Pits (formerly Category 14) pit production has remained the same. Wayside permit production increased on small volumes (.15 million in 2015 compared to zero in 2014). Production from aggregate permits on Crown Land increased 15.2% from 2014 (7.6 million in 2015 from 6.6 million tonnes in 2014).

Note: Totals and percentage changes are based on rounded numbers from Table 1.

Table 1

AGGREGATE PRODUCTION IN ONTARIO - 2003 - 2015
(rounded to nearest million tonnes)

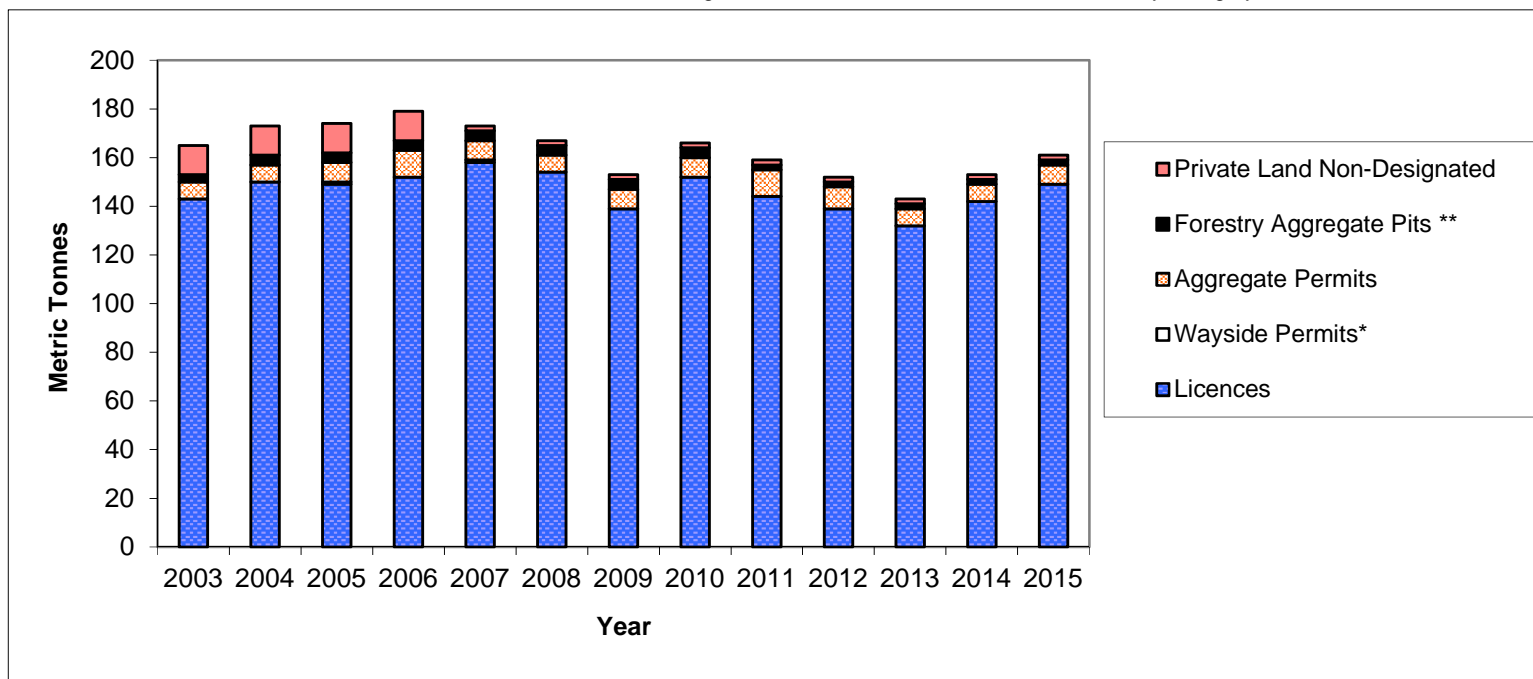
	2003	2004	2005	2006	2007	2008	2009	2010	2011	2012	2013	2014	2015
Licences	143	150	149	152	158	154	139	152	144	139	132	142	149
Wayside Permits*	0	0	1	0	1	0	0	0	0	0	0	0	0
Aggregate Permits	7	7	8	11	8	7	8	8	11	9	7	7	8
Forestry Aggregate Pits **	3	4	4	4	4	4	4	4	2	2	2	2	2
Private Land Non-Designated (estimated)	12	12	12	12	2	2	2	2	2	2	2	2	2
ONTARIO TOTAL	165	173	174	179	173	167	153	166	159	152	143	153	161

*Wayside Permit production is reported as the 'total applied for' tonnage of all permits issued, adjusted where actual tonnages for completed contracts are known.

*Actual production for Wayside Permits was .3 million tonnes for 2002, .3 million tonnes for 2003, .1 million tonnes for 2004, .3 million tonnes for 2006

.1 million tonnes for 2008, .2 million tonnes for 2009, zero tonnes for 2010 through 2014, .15 million tonnes for 2015; ** Formerly Category 14

2



Production Statistics Report
Table 2 Lower Tier Grouping Guidelines

The guiding principal is to not disclose the confidential information of a single client's tonnage.

1. There must be a least 3 clients with a minimum of 2 reporting tonnage, each with licenses, in any municipal (lower) tier that appears in the stats report.
2. If the above guideline can't be met then the grouping of lower tiers is required based on the following rules:
 - a. Upper tiers with multiple lower tier groups of 2 or less must be combined for the 3 client minimum lower tier grouping provided there are at least 2 clients reporting tonnage.
 - b. The preferred criteria for determining groups will be based on geographical proximity.
 - c. A single lower tier reporting ZERO tonnage is not reported if it is not required for the above minimum 3 client grouping.
 - d. If geographic proximity can't be resolved then historical (grouping of past stats reports) will determine grouping.

Table 2

**LICENCE AND WAYSIDE PERMIT PRODUCTION
BY LOWER TIER MUNICIPALITY**

Municipality	Licences (Reported in Metric Tonnes)	Wayside Permits	Total
<i>Algoma District</i>			
Algoma District, Unorganized	74,904.86		74,904.86
Blind River, Town of	48,194.49		48,194.49
Bruce Mines, Town of/Plummer Additional Tp	1,327,906.06		1,327,906.06
Elliot Lake, City of/Spanish, Town of/The North Shore, Tp	57,397.18		57,397.18
Hilton Tp	48,382.00		48,382.00
Huron Shores, Municipality of	573,936.97		573,936.97
Jocelyn Tp	28,815.76		28,815.76
Johnson Tp/Tarbutt & Tarbutt Add'l Tp	30,359.35		30,359.35
Laird Tp/St. Joseph Tp	3,788.00		3,788.00
Macdonald, Meredith & Aberdeen Add'l Tp	19,232.50		19,232.50
Sault Ste. Marie, City of/Prince Tp	666,763.29		666,763.29
Sub-Total	2,879,680.46	0.00	2,879,680.46
<i>Brant</i>			
Brant, County of/Brantford, City of	1,860,616.22		1,860,616.22
Sub-Total	1,860,616.22	0.00	1,860,616.22
<i>Bruce</i>			
Arran-Elderslie, Municipality of	124,168.07		124,168.07
Brockton, Municipality of	265,646.28		265,646.28
Huron-Kinloss Tp	398,435.55		398,435.55
Kincardine, Municipality of	194,003.96		194,003.96
Northern Bruce Peninsula, Municipality of	140,650.72		140,650.72
Saugeen Shores, Town of	182,210.23		182,210.23
South Bruce Peninsula, Town of	299,818.15		299,818.15
South Bruce, Municipality of	408,875.55		408,875.55
Sub-Total	2,013,808.51	0.00	2,013,808.51
<i>Chatham-Kent</i>			
Chatham-Kent, Municipality of	199,642.97		199,642.97
Sub-Total	199,642.97	0.00	199,642.97
<i>Dufferin</i>			
Amaranth Tp/East Luther Grand Valley Tp	116,262.10		116,262.10
East Garafraxa Tp	894,252.85		894,252.85
Melancthon Tp	868,991.03		868,991.03
Mono Tp	293,809.70		293,809.70
Mulmur Tp	85,179.66		85,179.66
Sub-Total	2,258,495.34	0.00	2,258,495.34
<i>Durham</i>			
Brock Tp	1,016,416.73		1,016,416.73
Clarington, Municipality of	5,769,440.36		5,769,440.36
Oshawa, City of/Scugog Tp	141,259.91		141,259.91
Uxbridge Tp	3,023,334.69		3,023,334.69
Sub-Total	9,950,451.69	0.00	9,950,451.69
<i>Elgin</i>			
Bayham/West Elgin, Municipality of	156,327.56		156,327.56
Central Elgin, Municipality of	190,249.97		190,249.97
Sub-Total	346,577.53	0.00	346,577.53

Table 2

**LICENCE AND WAYSIDE PERMIT PRODUCTION
BY LOWER TIER MUNICIPALITY**

Municipality	Licences (Reported in Metric Tonnes)	Wayside Permits	Total
Essex			
Amherstburg, Town of/Leamington, Municipality of/Pelee Tp	1,473,308.35		1,473,308.35
Kingsville, Town of	407,912.34		407,912.34
Sub-Total	1,881,220.69	0.00	1,881,220.69
Frontenac			
Central Frontenac Tp	100,939.55		100,939.55
Frontenac Islands Tp	32,884.55		32,884.55
Kingston, City of	1,108,042.38		1,108,042.38
North Frontenac Tp	129,184.09		129,184.09
South Frontenac Tp	442,844.71		442,844.71
Sub-Total	1,813,895.28	0.00	1,813,895.28
Greater Sudbury			
Greater Sudbury, City of	3,125,026.26		3,125,026.26
Sub-Total	3,125,026.26	0.00	3,125,026.26
Grey			
Chatsworth Tp	466,019.88		466,019.88
Georgian Bluffs, Tp	479,263.65		479,263.65
Grey Highlands, Municipality of	1,167,664.13		1,167,664.13
Meaford, Municipality of	516,807.90		516,807.90
Southgate Tp	369,838.21		369,838.21
The Blue Mountains, Town of	213,609.30		213,609.30
West Grey, Municipality of	859,823.23		859,823.23
Sub-Total	4,073,026.30	0.00	4,073,026.30
Haldimand			
Haldimand, County of	829,390.50		829,390.50
Sub-Total	829,390.50	0.00	829,390.50
Haliburton			
Algonquin Highlands, Tp	75,882.40		75,882.40
Dysart et al, Tp	200,879.11		200,879.11
Highlands East, Tp	5,794.01		5,794.01
Minden Hills, TP	103,598.68		103,598.68
Sub-Total	386,154.20	0.00	386,154.20
Halton			
Burlington, City of/Halton Hills, Town of	2,382,083.75		2,382,083.75
Milton, Town of	4,854,043.22		4,854,043.22
Sub-Total	7,236,126.97	0.00	7,236,126.97
Hamilton			
Hamilton, City of	5,852,142.53		5,852,142.53
Sub-Total	5,852,142.53	0.00	5,852,142.53

Table 2

**LICENCE AND WAYSIDE PERMIT PRODUCTION
BY LOWER TIER MUNICIPALITY**

Municipality	Licences (Reported in Metric Tonnes)	Wayside Permits	Total
<i>Hastings</i>			
Bancroft, Town of	23,287.82		23,287.82
Belleville, City of	708,257.29		708,257.29
Carlo/Mayo Tp	2,072.80		2,072.80
Centre Hastings, Municipality of	208,312.57		208,312.57
Faraday Tp	12,563.40		12,563.40
Hasting Highlands	288,421.30		288,421.30
Limerick Tp	26,226.68		26,226.68
Madoc Tp	585,632.12		585,632.12
Marmora & Lake, Municipality of	5,211.00		5,211.00
Quinte West, City of	641,832.11		641,832.11
Tweed, Municipality of	78,765.85		78,765.85
Tyendinaga Tp	255,709.39		255,709.39
Wollaston	22,721.09		22,721.09
Sub-Total	2,859,013.42	0.00	2,859,013.42
<i>Huron</i>			
Ashfield-Colborne-Wawanosh Tp	1,031,124.10		1,031,124.10
Bluewater, Municipality of	13,856.29		13,856.29
Central Huron, Municipality of	396,142.75		396,142.75
Howick Tp	490,089.10		490,089.10
Huron East, Municipality of	824,664.13		824,664.13
Morris-Turnberry, Municipality of	149,195.68		149,195.68
North Huron Tp	98,145.38		98,145.38
South Huron, Municipality of	108,416.54		108,416.54
Sub-Total	3,111,633.97	0.00	3,111,633.97
<i>Kawartha Lakes</i>			
Kawartha Lakes, City of	7,043,188.07		7,043,188.07
Sub-Total	7,043,188.07	0.00	7,043,188.07
<i>Lambton</i>			
Lambton Shores, Municipality of	229,409.79		229,409.79
Warwick Tp/Plympton-Wyoming, Town of	347,689.66		347,689.66
Sub-Total	577,099.45	0.00	577,099.45
<i>Lanark</i>			
Beckwith Tp/Drummond-North Elmsley Tp	159,086.34		159,086.34
Lanark Highlands Tp	1,141,286.12		1,141,286.12
Mississippi Mills, Town of	370,259.36		370,259.36
Montague Tp	172,607.83		172,607.83
Tay Valley Tp	33,634.92		33,634.92
Sub-Total	1,876,874.57	0.00	1,876,874.57

Table 2

**LICENCE AND WAYSIDE PERMIT PRODUCTION
BY LOWER TIER MUNICIPALITY**

Municipality	(Reported in Metric Tonnes)	Licences	Wayside Permits	Total
<i>Leeds & Grenville</i>				
Athens Tp/Front of Yonge Tp/Leeds and Thousand Islands Tp		242,457.72		242,457.72
Augusta Tp		60,492.21		60,492.21
Edwardsburgh-Cardinal Tp		73,340.53		73,340.53
Elizabethtown-Kitley Tp/Merrickville-Wolford, Village of		310,279.89		310,279.89
Leeds and Thousand Islands Tp		484,332.69		484,332.69
North Grenville Tp		621,510.64		621,510.64
Rideau Lakes Tp		115,496.54		115,496.54
Sub-Total		1,907,910.22	0.00	1,907,910.22
<i>Lennox & Addington</i>				
Addington Highlands Tp		16,355.56		16,355.56
Greater Napanee, Town of		255,797.51		255,797.51
Loyalist Tp		1,972,358.50		1,972,358.50
Stone Mills Tp		121,821.63		121,821.63
Sub-Total		2,366,333.20	0.00	2,366,333.20
<i>Manitoulin District</i>				
Assignack, Tp		16,470.72		16,470.72
Billings, Tp		8,258.16		8,258.16
Central Manitoulin Tp		43,065.31		43,065.31
Gordon/Barrie Island/Burpee & Mills, Tp/Cockburn Island, Tp		45,848.94		45,848.94
Northeastern Manitoulin & The Islands		177,150.75		177,150.75
Tehkummah, Tp		29,986.60		29,986.60
Unorganized - Manitoulin D		2,613,616.30		2,613,616.30
Sub-Total		2,934,396.78	0.00	2,934,396.78
<i>Middlesex</i>				
Adelaide Metcalfe Tp/Strathroy-Caradoc Tp		43,384.39		43,384.39
London, City of		1,072,121.55		1,072,121.55
Lucan Biddulph Tp		4,927.27		4,927.27
Middlesex Centre Tp		289,211.05		289,211.05
North Middlesex, Municipality of		46,185.26		46,185.26
Thames Centre, Municipality of		2,224,836.72		2,224,836.72
Sub-Total		3,680,666.24	0.00	3,680,666.24
<i>Muskoka</i>				
Bracebridge		684,461.01		684,461.01
Georgian Bay		9,650.06		9,650.06
Gravenhurst		162,323.86		162,323.86
Huntsville		1,043,171.95		1,043,171.95
Lake of Bays, Tp		129,577.75		129,577.75
Muskoka Lakes, Tp		260,761.03		260,761.03
Sub-Total		2,289,945.66	0.00	2,289,945.66
<i>Niagara</i>				
Fort Erie, Town of/Pelham, Town of/Port Colborne, City of/ Wainfleet Tp		2,057,621.99		2,057,621.99
Lincoln, Town of/Niagara-on-the-Lake, Town of		2,060,398.67		2,060,398.67
Niagara Falls, City of		876,013.75		876,013.75
Sub-Total		4,994,034.41	0.00	4,994,034.41

Table 2

**LICENCE AND WAYSIDE PERMIT PRODUCTION
BY LOWER TIER MUNICIPALITY**

Municipality	Licences (Reported in Metric Tonnes)	Wayside Permits	Total
<i>Nipissing District</i>			
Bonfield Tp	120,385.59		120,385.59
Calvin Tp/East Ferris, Municipality of	35,187.85		35,187.85
Chisholm Tp	35,288.90		35,288.90
Mattawan Tp/South Algonquin Tp/Unorganized - Nippissing D	12,027.11		12,027.11
North Bay, City of	446,585.05		446,585.05
Papineau-Cameron Tp	40,702.49		40,702.49
West Nipissing, Municipality of	517,113.33		517,113.33
Sub-Total	1,207,290.32	0.00	1,207,290.32
<i>Norfolk</i>			
Norfolk, County of	614,010.27		614,010.27
Sub-Total	614,010.27	0.00	614,010.27
<i>Northumberland</i>			
Alnwick-Haldimand Tp	435,917.23		435,917.23
Brighton, Municipality of	145,939.26		145,939.26
Cramahe Tp	2,169,694.39		2,169,694.39
Hamilton Tp	153,463.65		153,463.65
Port Hope, Municipality of	32,935.71		32,935.71
Trent Hills, Municipality of	163,949.63		163,949.63
Sub-Total	3,101,899.87	0.00	3,101,899.87
<i>Ottawa</i>			
Ottawa, City of	9,694,477.15		9,694,477.15
Sub-Total	9,694,477.15	0.00	9,694,477.15
<i>Oxford</i>			
Blandford-Blenheim Tp	669,438.12		669,438.12
East Zorra-Tavistock Tp/Norwich Tp	164,182.15		164,182.15
South-West Oxford Tp	886,459.88		886,459.88
Zorra Tp	4,119,663.26		4,119,663.26
Sub-Total	5,839,743.41	0.00	5,839,743.41
<i>Parry Sound District</i>			
Armour Tp/Burks Falls, Village of	74,120.70		74,120.70
Callander, Municipality of	55,717.56		55,717.56
Carling Tp/The Archipelago Tp	12,410.11		12,410.11
Joly Tp	132,310.38		132,310.38
Kearney, Town of	32,437.63		32,437.63
Macher Tp	24,055.08		24,055.08
Magnetawan, Municipality of	49,340.09		49,340.09
McDougall Tp/Parry Sound, Town of	126,166.42		126,166.42
McKeller Tp	46,110.77		46,110.77
McMurrich-Monteith Tp	7,521.84		7,521.84
Nipissing Tp	24,793.60		24,793.60
Perry Tp	22,194.64		22,194.64
Powassan, Municipality of	47,207.16		47,207.16
Ryerson Tp	111,300.15		111,300.15
Seguin Tp	29,566.15		29,566.15
Strong Tp	429,752.38		429,752.38
Unorganized - Parry Sound	8,077.06		8,077.06
Whitestone The Municipality of	19,719.68		19,719.68
Sub-Total	1,252,801.40	0.00	1,252,801.40

Table 2

**LICENCE AND WAYSIDE PERMIT PRODUCTION
BY LOWER TIER MUNICIPALITY**

Municipality	Licences (Reported in Metric Tonnes)	Wayside Permits	Total
<i>Peel</i>			
Caledon, Town of	3,457,525.67	150,000.00	3,607,525.67
Sub-Total	3,457,525.67	150,000.00	3,607,525.67
<i>Perth</i>			
North Perth, Town of/St. Marys, Separated Town of	87,223.69		87,223.69
Perth East Tp	607,761.92		607,761.92
Perth South Tp	1,500,331.96		1,500,331.96
West Perth Tp	355,209.12		355,209.12
Sub-Total	2,550,526.69	0.00	2,550,526.69
<i>Peterborough</i>			
Asphodel-Norwood Tp	266,645.00		266,645.00
Cavan-Millbrook-North Monaghan Tp	51,104.86		51,104.86
Douro-Dummer Tp	532,780.66		532,780.66
Galway-Cavendish-Harvey Tp	662,341.17		662,341.17
Havelock-Belmont-Methuen Tp	998,628.60		998,628.60
North Kawartha Tp	5,550.63		5,550.63
Otonabee South Monaghan Tp	309,857.52		309,857.52
Selwyn Tp	300,064.28		300,064.28
Sub-Total	3,126,972.72	0.00	3,126,972.72
<i>Prescott & Russell</i>			
Alfred & Plantagenet Tp	258,102.20		258,102.20
Champlain Tp	605,855.70		605,855.70
Clarence-Rockland, City of	145,367.04		145,367.04
East Hawkesbury Tp	16,300.47		16,300.47
Russell Tp	108,271.56		108,271.56
The Nation, Municipality of	384,441.23		384,441.23
Sub-Total	1,518,338.20	0.00	1,518,338.20
<i>Prince Edward Co</i>			
Prince Edward, County of	1,335,978.28		1,335,978.28
Sub-Total	1,335,978.28	0.00	1,335,978.28
<i>Renfrew</i>			
Admaston-Bromley Tp/Renfrew, Town of	151,364.25		151,364.25
Bonnechere Valley Tp	106,991.11		106,991.11
Brudenell, Lyndoc and Raglan Tp	42,554.41		42,554.41
Deep River Tp/Head, Clara & Maria Tp	13,127.71		13,127.71
Greater Madawaska Tp	7,157.00		7,157.00
Horton Tp	333,479.05		333,479.05
Killaloe, Hagarty and Richards Tp	78,123.80		78,123.80
Laurentian Hills	32,403.14		32,403.14
Laurentian Valley Tp	400,976.90		400,976.90
Madawaska Valley	39,143.61		39,143.61
McNab-Braeside Tp	393,420.20		393,420.20
North Algona-Wilberforce Tp	42,131.13		42,131.13
Petawawa, Town of	387,975.07		387,975.07
Whitewater Region Tp	115,361.38		115,361.38
Sub-Total	2,144,208.76	0.00	2,144,208.76

Table 2

**LICENCE AND WAYSIDE PERMIT PRODUCTION
BY LOWER TIER MUNICIPALITY**

Municipality	Licences (Reported in Metric Tonnes)	Wayside Permits	Total
<i>Simcoe</i>			
Adjala-Tosorontio Tp	165,926.67		165,926.67
Clearview Tp	690,147.92		690,147.92
Collingwood, Town of/Essa Tp/Innisfil, Town of	138,608.67		138,608.67
Midland, Town of/Penetanguishine, Town of/	202,743.19		202,743.19
New Tecumseth, Town of	36,540.00		36,540.00
Oro-Medonte Tp	2,494,262.68		2,494,262.68
Ramara Tp	4,378,523.67		4,378,523.67
Severn Tp	3,993,841.77		3,993,841.77
Springwater Tp	1,064,469.72		1,064,469.72
Tay Tp	106,091.10		106,091.10
Tiny Tp	105,967.49		105,967.49
Sub-Total	13,377,122.88	0.00	13,377,122.88
<i>Stormont, Dundas & Glengarry</i>			
North Dundas Tp	466,898.75		466,898.75
North Glengarry Tp	37,834.65		37,834.65
North Stormont Tp	957,698.98		957,698.98
South Dundas Tp	115,026.20		115,026.20
South Glengarry Tp	166,580.21		166,580.21
South Stormont Tp	752,081.50		752,081.50
Sub-Total	2,496,120.29	0.00	2,496,120.29
<i>Sudbury District</i>			
Baldwin Tp	95,603.47		95,603.47
French River, Municipality of	106,721.54		106,721.54
Killarny, Municipality of/Nairn & Hyman Tp	232,909.13		232,909.13
Markstay-Warren, Municipality of	51,754.41		51,754.41
Sables Spanish Rivers Tp/Espanola, Town of	116,139.87		116,139.87
Sudbury District, Unorganized	332,121.98		332,121.98
Sub-Total	935,250.40	0.00	935,250.40
<i>Thunder Bay District</i>			
Conmee, Tp	211,518.87		211,518.87
Neebing, Municipality of	40,711.33		40,711.33
Oliver Paipoonge, Municipality of/Thunder Bay, City of	182,754.73		182,754.73
Shuniah, Tp	211,503.73		211,503.73
Sub-Total	646,488.66	0.00	646,488.66
<i>Waterloo</i>			
Cambridge, City of/Kitchener, City of	99,722.96		99,722.96
North Dumfries Tp	5,384,479.09		5,384,479.09
Wellesley Tp	1,253,781.95		1,253,781.95
Wilmot Tp	1,911,277.18		1,911,277.18
Woolwich Tp	153,608.52		153,608.52
Sub-Total	8,802,869.70	0.00	8,802,869.70

Table 2

**LICENCE AND WAYSIDE PERMIT PRODUCTION
BY LOWER TIER MUNICIPALITY**

Municipality	Licences	Wayside Permits	Total
Wellington			
Centre Wellington Tp	871,725.89		871,725.89
Erin, Town of	1,325,608.95		1,325,608.95
Guelph-Eramosa Tp	442,566.96		442,566.96
Mapleton Tp	85,251.48		85,251.48
Minto, Town of	336,836.00		336,836.00
Puslinch Tp	3,917,048.85		3,917,048.85
Wellington North Tp	115,686.82		115,686.82
Sub-Total	7,094,724.95	0.00	7,094,724.95
York			
East Gwillimbury, Town of	85,290.12		85,290.12
Georgina, Town of	9,936.60		9,936.60
Whitchurch-Stouffville, Town of	963,029.60		963,029.60
Sub-Total	1,058,256.32	0.00	1,058,256.32
GRAND TOTAL	148,601,957.38	150,000.00	148,751,957.38

Table 3

**LICENCE AND WAYSIDE PRODUCTION
BY UPPER TIER MUNICIPALITY
(Million Tonnes)**

Municipality	2006	2007	2008	2009	2010	2011	2012	2013	2014	2015
Algoma, District of	1.2	2.8	2.9	2.6	2.9	2.9	2.6	2.4	2.7	2.9
Brant Co.	2.3	2.3	2.2	1.4	1.9	1.7	1.7	1.7	1.6	1.9
Bruce Co.	2.3	2.4	2.0	1.7	2.3	1.7	1.5	1.4	1.8	2.0
Chatham-Kent, R. M. of	0.3	0.3	0.2	0.3	0.3	0.4	0.2	0.3	0.2	0.2
Dufferin Co.	3.1	3.0	3.1	2.7	2.7	2.3	2.2	2.3	2.7	2.3
Durham, R. M. of	12.2	11.7	10.0	8.3	9.6	10.2	9.9	10.1	10.3	10.0
Elgin Co.	0.7	0.6	0.6	0.6	0.5	0.5	0.4	0.4	0.4	0.3
Essex Co.	1.6	1.7	1.6	1.7	2.6	2.0	2.0	2.1	1.6	1.9
Frontenac Co.	2.1	2.1	2.9	2.6	2.3	2.2	1.9	2.0	2.0	1.8
Greater Sudbury, City of	2.9	2.7	3.2	2.1	2.5	3.1	2.7	2.6	2.8	3.1
Grey Co.	3.4	3.2	3.3	2.9	3.5	3.0	2.6	2.8	3.2	4.1
Haldimand Co.	1.8	1.4	1.3	1.1	1.4	1.2	1.3	1.2	1.5	0.8
Haliburton Co.	----	0.5	0.6	0.5	0.5	0.5	0.4	0.4	0.5	0.4
Halton, R. M. of	9.6	9.5	8.5	6.9	7.2	8.7	7.4	6.8	7.7	7.2
Hamilton, City of	6.2	5.6	5.7	4.9	5.3	5.0	5.0	4.9	5.2	5.9
Hastings Co.	2.3	2.6	3.0	3.4	3.5	3.1	2.7	2.5	3.1	2.9
Huron Co.	2.7	2.9	2.9	3.0	2.5	2.8	2.5	2.7	3.7	3.1
Kawartha Lakes, City of	6.5	5.9	5.5	4.5	4.6	4.7	5.1	4.3	5.5	7.0
Lambton Co.	0.7	0.5	0.6	0.5	0.5	0.5	0.4	0.4	0.7	0.6
Lanark Co.	2.3	2.3	1.9	2.5	2.9	1.8	1.5	1.8	1.7	1.9
Leeds & Grenville Co.'s	2.3	2.0	2.3	2.1	2.6	2.0	2.1	1.9	2.2	1.9
Lennox & Addington Co.	1.9	2.0	2.0	2.0	2.4	2.2	2.2	1.8	2.0	2.4
Manitoulin, District of	----	3.6	3.9	2.9	3.6	3.2	2.5	2.2	2.8	2.9
Middlesex Co.	5.6	5.2	4.8	4.3	4.8	4.0	3.8	3.6	3.6	3.7
Muskoka	----	2.1	2.1	2.3	2.4	2.1	1.9	2.1	2.0	2.3
Niagara, R. M. of	5.1	4.0	4.0	3.9	4.6	3.9	4.7	4.6	4.3	5.0
Nipissing, District of	----	1.3	1.2	1.2	1.1	1.1	1.2	1.0	1.1	1.2
Norfolk Co.	0.5	0.5	0.5	0.4	0.5	0.5	0.8	1.0	0.8	0.6
Northumberland Co.	3.4	3.4	3.0	2.8	3.1	2.7	3.1	2.6	2.6	3.1
Ottawa, City of	11.1	11.4	11.2	11.0	12.7	10.9	10.6	9.6	10.0	9.7
Oxford Co.	5.4	7.1	5.8	4.9	5.2	4.9	5.6	5.8	6.3	5.8
Parry Sound, District of	----	1.5	1.8	2.4	3.5	2.1	1.5	1.2	1.4	1.3
Peel, R. M. of	5.3	4.7	3.8	3.6	3.9	3.6	3.9	3.6	4.0	3.5
Perth Co.	2.4	2.1	1.9	1.9	2.7	2.2	2.1	1.8	2.5	2.6
Peterborough Co.	2.6	2.9	3.2	3.2	3.3	3.2	2.6	2.6	2.7	3.1
Prescott & Russell Co.'s	1.5	1.4	1.7	1.7	1.6	1.6	1.5	1.3	1.5	1.5
Prince Edward Co.	2.2	2.4	2.4	1.6	1.7	1.6	1.6	1.3	1.5	1.3
Renfrew Co.	1.9	2.3	2.1	2.3	2.3	2.2	2.2	1.9	1.9	2.1
Simcoe Co.	13.4	12.0	12.1	10.5	10.3	10.7	10.5	10.1	11.4	13.4
Stormont, Dundas & Glengarry Co.'s	3.4	2.8	3.2	3.4	3.3	4.1	3.5	3.2	2.8	2.5
Sudbury, District of	0.8	1.7	1.1	0.8	0.8	0.9	1.0	0.8	0.9	0.9
Thunder Bay, District of	----	0.3	0.7	1.0	0.8	1.0	1.1	0.8	0.9	0.6
Waterloo, R. M. of	9.3	8.2	7.9	7.1	7.5	7.8	7.3	6.9	6.9	8.8
Wellington Co.	8.8	9.0	8.0	6.6	6.8	6.5	7.0	6.5	6.4	7.1
York, R. M. of	1.0	0.7	1.1	1.0	0.7	0.6	0.9	0.7	0.6	1.1
TOTAL	151.9	158.9	153.8	139.0	151.7	143.7	139.3	132.0	142.0	148.6

Note: Totals may not equal due to rounding.

Table 4

**LICENCE PRODUCTION IN 2015
THE TOP TEN PRODUCING MUNICIPALITIES
(Rounded to nearest million tonnes)**

Municipality(1)	County/Region	2015 Production	Production(2)				
			2014	2013	2012	2011	2010
1	City of Ottawa	9.7	10.0	9.6	10.6	10.9	12.7
2	City of Kawartha Lakes	7.0	5.5	4.3	5.1	4.7	4.6
3	City of Hamilton	5.9	5.2	4.9	5.0	5.0	5.3
4	Municipality of Clarington	5.8	5.5	5.3	5.1	5.0	4.9
5	Township of North Dumfries	5.4	4.2	4.1	4.4	4.5	3.8
6	Town of Milton	4.9	5.5	4.8	4.4	4.9	3.7
7	Ramara Township	4.4	3.0	2.4	2.1	2.2	2.2
8	Township of Zorra	4.1	4.9	4.1	4.1	3.6	3.3
9	Severn Township	4.0	3.7	3.0	3.1	2.7	2.6
10	Township of Puslinch	3.9	3.5	3.5	3.8	3.1	3.6
Total		55.1	51.0	46.0	47.7	46.6	46.7

Notes:

1. Municipalities are ranked in order of their licenced production for 2015.
2. Historical data are for current year's Top Ten Producing Municipalities.

Table 5

**NUMBER AND TYPE OF AGGREGATE LICENCES
(Reported by MNR District)**

District	No. of Licences	Category		Type of Operation			
		Class A	Class B	Pit	Quarry	Pit & Quarry	Underwater
Aurora (GTA)	133	117	16	115	18	0	0
Aylmer	298	233	65	284	8	6	0
Bancroft	263	99	164	189	34	40	0
Guelph (Cambridge)	460	397	63	421	36	3	0
Kemptville	460	289	171	315	122	23	0
Midhurst	482	372	110	417	60	5	0
North Bay	140	60	80	107	7	26	0
Parry Sound	293	117	176	188	10	95	0
Pembroke	221	76	145	199	12	10	0
Peterborough (Tweed)	527	296	231	422	88	17	0
Sault Ste. Marie	99	56	43	80	6	13	0
Sudbury	227	128	99	161	20	46	0
Thunder Bay	61	25	36	47	5	9	0
Wawa	2	2	0	1	0	1	0
TOTAL	3,666	2,267	1,399	2,946	426	294	0

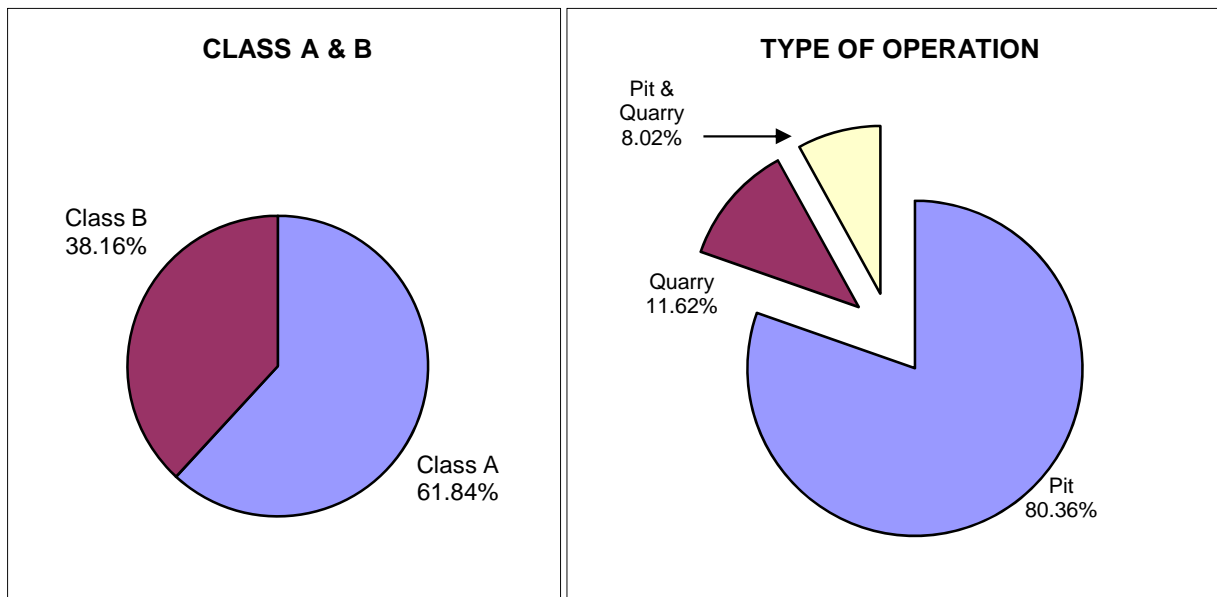
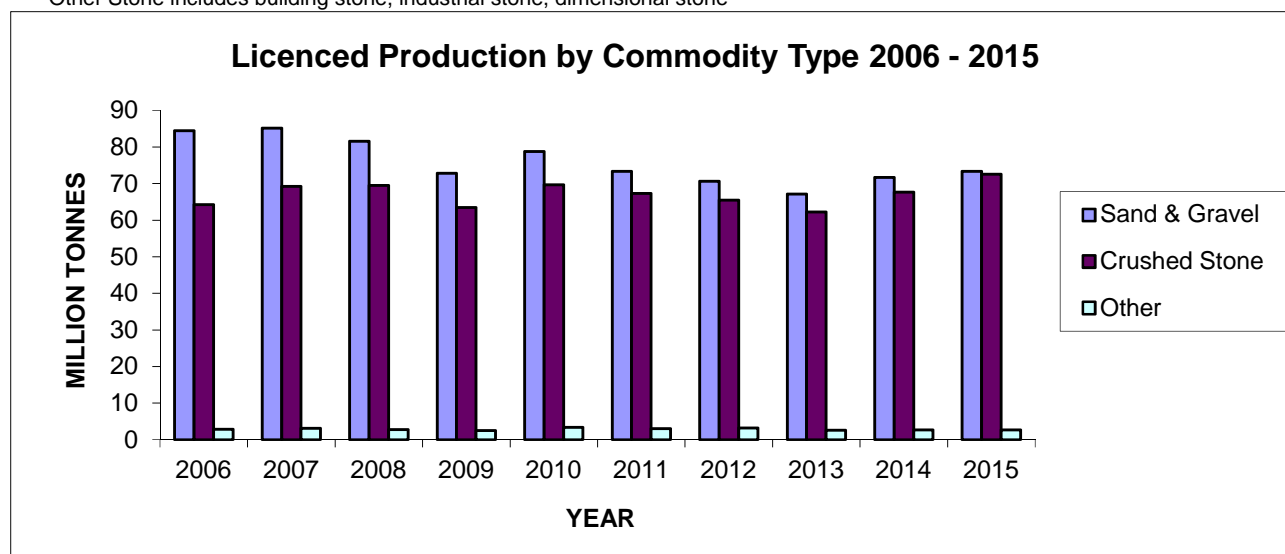


Table 6

**2015 LICENCED AGGREGATE PRODUCTION
BY COMMODITY TYPE
(Reported by MNR District)**

District	Total	Sand & Gravel	Crushed Stone	Clay/ Shale	Other Stone
Aurora (GTA)	21,701,660.65	10,754,945.55	10,283,249.00	621,389.51	42,076.59
Aylmer	13,138,960.56	9,482,530.58	3,608,210.39	27,707.53	20,512.06
Bancroft	5,695,606.19	620,351.14	4,961,553.74	16.00	113,685.31
Guelph (Cambridge)	35,237,285.91	22,641,528.87	12,465,621.50	123,610.81	6,524.73
Kemptville	17,484,310.59	3,576,315.96	12,596,347.22	15,763.00	1,295,884.41
Midhurst	21,581,106.09	10,987,909.45	10,377,610.43	8,621.63	206,964.58
North Bay	1,498,702.18	1,000,349.72	479,617.74	0.00	18,734.72
Parry Sound	3,267,072.92	1,274,264.50	1,967,476.63	432.50	24,899.29
Pembroke	2,153,618.60	1,611,255.66	538,640.14	308.29	3,414.51
Peterborough	16,330,657.13	6,464,917.76	9,744,014.23	98,869.15	22,855.99
Sault Ste. Marie	2,872,369.42	1,397,821.28	1,469,079.64	4,349.50	1,119.00
Sudbury	6,994,118.48	2,973,524.83	3,994,887.38	20,485.82	5,220.45
Thunder Bay	646,488.66	533,671.46	112,635.20	0.00	182.00
TOTAL	148,601,957.38	73,319,386.76	72,598,943.24	921,553.74	1,762,073.64

Note: Totals may not equal due to rounding - Reported in metric tonnes
Other Stone includes building stone, industrial stone, dimensional stone



**Yearly Production for Aggregate Licences
(in Million Tonnes)**

	Total	Sand & Gravel	Crushed Stone	Other
2006	151.61	84.49	64.24	2.88
2007	157.56	85.17	69.24	3.15
2008	153.80	81.55	69.52	2.73
2009	138.84	72.79	63.51	2.54
2010	151.76	78.78	69.64	3.34
2011	143.73	73.36	67.34	3.03
2012	139.30	70.60	65.50	3.20
2013	131.97	67.13	62.23	2.61
2014	142.02	71.68	67.67	2.67
2015	148.60	73.32	72.60	2.68

Table 7

**2015 AGGREGATE PERMIT PRODUCTION
BY COMMODITY TYPE
(Reported by MNR District)**

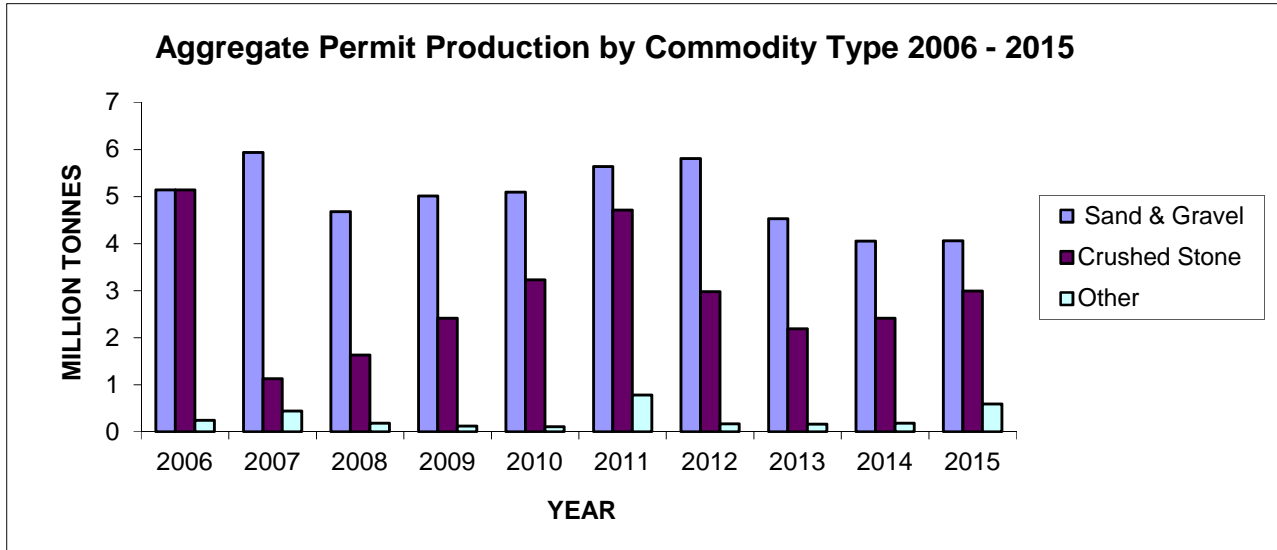
Region/District	Total Production	Sand & Gravel	Crushed Stone	Clay/Shale	Other Stone
NORTHEAST					
Chapleau	236,498.45	236,498.45	-	-	-
Cochrane	400,368.38	122,175.07	278,193.31	-	-
Hearst	407,913.63	207,036.28	197,134.35	1,769.00	-
Kirkland Lake	145,055.70	145,055.70	-	-	-
North Bay	445,074.05	379,398.05	65,651.00	-	-
Sault Ste. Marie	353,133.12	262,936.12	90,197.00	-	-
Sudbury	739,313.67	210,951.19	497,600.25	85.14	-
Timmins	226,049.77	226,049.77	-	-	-
Wawa	317,625.46	176,257.64	64,704.82	76,663.00	-
Sub-Total	3,271,032.23	1,966,358.27	1,193,480.73	78,517.14	-
NORTHWEST					
Dryden	576,378.00	278,534.00	296,552.00	-	-
Fort Frances	1,175,879.75	499,707.37	674,016.38	-	-
Kenora	304,800.01	202,816.84	88,241.22	-	-
Nipigon	514,446.03	308,658.04	204,774.79	-	-
Red Lake	156,722.39	156,150.17	572.22	-	-
Sioux Lookout	333,190.08	333,101.68	-	-	-
Thunder Bay	294,925.91	151,494.46	143,352.00	-	-
Sub-Total	3,356,342.17	1,930,462.56	1,407,508.61	-	-
SOUTHCENTRAL					
Algonquin Park	-	-	-	-	-
Aurora (GTA)	328,892.00	-	-	328,892.00	-
Aylmer	7,696.85	7,696.85	-	-	-
Bancroft	433,637.79	35,972.80	264,541.12	960.00	-
Guelph (Cambridge)	-	-	-	-	-
Kemptville	1,447.72	1,447.72	-	-	-
Midhurst	-	-	-	-	-
Parry Sound	69,432.07	34,627.66	33,824.41	-	-
Pembroke	82,418.60	82,418.60	-	-	-
Peterborough (Tweed)	92,161.82	-	92,161.82	-	-
Sub-Total	1,015,686.85	162,163.63	390,527.35	329852.00	-
TOTAL	7,643,061.25	4,058,984.46	2,991,516.69	408,369.14	-

Note: Totals may not equal due to rounding - Reported in metric tonnes

Other Stone includes building stone, industrial stone, dimensional stone

Table 8

**2015 AGGREGATE PERMIT PRODUCTION
BY COMMODITY TYPE
(Reported By Year)**



**Yearly Production for Aggregate Permits
(in Million Tonnes)**

	Total	Sand & Gravel	Crushed Stone	Other
2006	10.52	5.14	5.14	0.24
2007	7.51	5.94	1.13	0.44
2008	6.49	4.68	1.63	0.18
2009	7.54	5.01	2.41	0.12
2010	8.43	5.09	3.23	0.11
2011	11.13	5.64	4.71	0.78
2012	8.96	5.81	2.98	0.17
2013	6.88	4.53	2.19	0.16
2014	6.64	4.05	2.41	0.18
2015	7.64	4.06	2.99	0.59

Table 9

**2015 AGGREGATE PERMIT PRODUCTION
BY COMMODITY TYPE
(Reported by CAC* Geographic Areas)**

Area	Total	Sand & Gravel	Crushed Stone	Clay/ Shale	Other Stone
Southwest (1)	7,697	7,697	0	0	0
Peninsula (2)	0	0	0	0	0
West Central (3)	0	0	0	0	0
GTA (4)	328,892	0	0	328,892	0
East Central (5)	537,988	48,800	355,085	960	133,144
East (6)	85,850	84,232	1,618	0	0
Northeast (7)	2,622,152	1,496,672	1,090,950	1,854	32,676
Northwest (8)	4,060,482	2,421,584	1,543,864	76,663	18,371
TOTAL	7,643,061	4,058,984	2,991,517	408,369	184,191

Note: Totals may not equal due to rounding - Reported in metric tonnes

Other Stone includes building stone, industrial stone, dimensional stone

*CAC - Cement Association of Canada formerly CPCA - Canadian Portland Cement Association

**2015 AGGREGATE LICENCE PRODUCTION
BY COMMODITY TYPE
(Reported by CAC* Geographic Areas)**

Area	Total	Sand & Gravel	Crushed Stone	Clay/ Shale	Other Stone
Southwest (1)	18,187,111	13,627,138	4,420,885	112,052	27,037
Peninsula (2)	14,150,194	2,675,527	11,435,596	39,071	0
West Central (3)	37,620,048	26,809,304	10,594,962	8,817	206,965
GTA (4)	21,702,361	10,755,546	10,283,249	621,390	42,177
East Central (5)	20,143,152	7,296,111	12,635,481	59,538	152,022
East (6)	23,818,158	5,790,812	16,664,169	55,851	1,307,326
Northeast (7)	9,454,765	4,432,327	4,976,706	20,486	25,247
Northwest (8)	3,526,169	1,932,623	1,587,896	4,350	1,301
TOTAL	148,601,957	73,319,387	72,598,943	921,554	1,762,074

Note: Totals may not equal due to rounding - Reported in metric tonnes

Other Stone includes building stone, industrial stone, dimensional stone

*CAC - Cement Association of Canada formerly CPCA - Canadian Portland Cement Association

Table 10

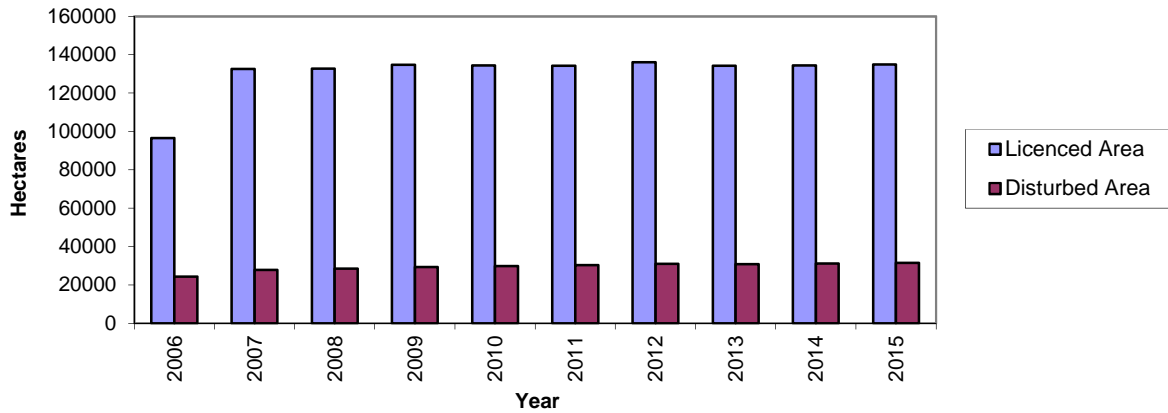
**REHABILITATION OF
LICENCED AGGREGATE SITES IN 2015
(Reported by MNR District)**

District	Total No. of Licences	Total Licenced Area	Original Disturbed Area	New Disturbed Area	New Rehab. Area	Total Disturbed Area
Aurora (GTA)	133	7,941.63	2,724.10	67.17	176.14	2,615.13
Aylmer	298	8,816.43	3,120.58	104.55	237.87	2,987.26
Bancroft	263	9,277.34	1,234.47	51.54	8.81	1,277.20
Guelph (Cambridge)	460	16,741.11	5,163.24	242.51	135.33	5,270.42
Kemptville	460	14,300.63	4,545.23	68.22	32.17	4,581.28
Midhurst	482	15,900.74	4,044.17	211.55	72.63	4,183.09
North Bay	140	6,549.10	907.40	42.13	165.12	784.41
Parry Sound	293	9,362.30	2,062.28	51.45	26.93	2,086.80
Pembroke	221	5,600.25	861.02	18.35	13.15	866.21
Peterborough (Tweed)	527	15,611.32	3,976.40	130.27	72.06	4,034.61
Sault Ste. Marie	99	3,967.42	745.72	26.78	4.37	768.14
Sudbury	227	16,856.31	1,853.83	51.23	49.79	1,855.27
Thunder Bay	61	3,769.07	250.65	23.75	30.12	244.28
Wawa	2	46.87	0.00	0.00	0.00	0.00
TOTAL	3,666	134,740.52	31,489.09	1,089.51	1,024.50	31,554.10

Note: Areas reported in hectares

These statistics are compiled from information supplied by licencees and are not independently checked for accuracy.

Total Licenced & Disturbed Area 2006 - 2015



New Rehabilitated & Disturbed Area 2006 - 2015

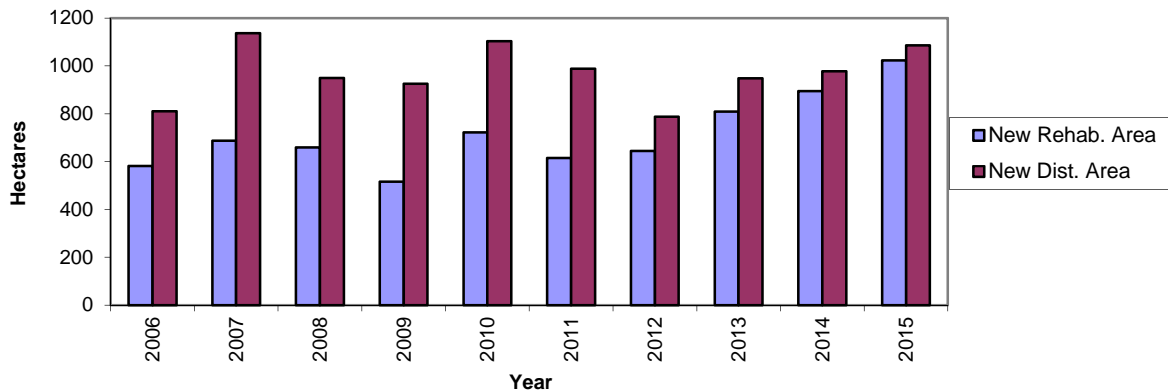


Table 11

**NUMBER AND TYPE OF AGGREGATE PERMITS
(Reported by MNR District)**

Region/District	Total Hectarage	Total No. of Permits	Pit	Quarry	Pit & Quarry	Underwater
NORTHEAST						
Chapleau	1,294.31	107	103	4	0	0
Cochrane	3,458.02	132	114	11	7	0
Hearst	3,697.72	190	163	25	2	0
Kirkland Lake	2,000.08	150	138	9	3	0
North Bay	3,300.36	198	159	30	9	0
Sault Ste. Marie	1,097.59	91	85	4	2	0
Sudbury	4,885.75	160	119	24	17	0
Timmins	2,152.76	142	127	9	6	0
Wawa	2,434.18	185	169	9	7	0
Sub-Total	24,320.77	1,355	1,177	125	53	0
NORTHWEST						
Dryden	2,403.63	173	168	9	11	0
Fort Frances	2,386.10	210	187	7	16	0
Kenora	3,045.81	175	133	25	19	0
Nipigon	3,556.40	224	186	17	19	0
Red Lake	1,195.05	67	65	3	2	0
Sioux Lookout	2,143.91	84	77	2	3	0
Thunder Bay	4,076.82	160	117	23	12	0
Sub-Total	18,807.72	1,093	933	86	82	0
SOUTHCENTRAL						
Aurora	4.90	1	1	0	0	0
Aylmer	0.10	1	0	0	0	1
Bancroft	1,383.80	69	53	16	0	0
Guelph (Cambridge)	620.00	1	0	0	0	1
Kemptville	2.00	1	1	0	0	0
Parry Sound	969.98	87	61	19	7	0
Pembroke	135.00	34	34	0	0	0
Peterborough (Tweed)	31.40	2	0	1	1	0
Sub-Total	3,147.18	196	150	36	8	2
TOTAL	46,275.67	2,644	2,260	247	143	2

APPENDIX A

GLOSSARY OF TERMS

For actual definitions, please refer to the Aggregate Resources Act.

Active Licence

A licence that has been issued, being transferred, or under suspension at the end of the calendar year.

Aggregate

Includes sand, gravel, limestone, dolostone, crushed stone, rock other than metallic ores, and other prescribed material.

Aggregate Permit

A permit for a pit or quarry issued under the Aggregate Resources Act allowing for the excavation of aggregate that is the property of the Crown, on land where the surface rights are the property of the Crown, or from land under water.

ALPS

The Aggregate Licence and Permit System (ALPS) is an automated data base that facilitates the management of mineral aggregate production and related information, for individual licences, aggregate permits and wayside permits across the province.

Building Dimension

A slab or block of rock, flagstone if foliated and dimension stone if massive, generally rectangular, and cut to specified measurements for ornamental surfacing in buildings or other construction applications.

Clay/Shale

Clay is a fine-grained, natural, earthy material composed primarily of hydrous aluminum silicates. It is plastic when moist and hardens when dried. Shale is fine-grained sedimentary laminated rock predominantly composed of clay grade and other fine minerals.

Class A Licence

A licence under the Aggregate Resources Act to allow excavation of more than 20,000 tonnes of aggregate annually from a pit or quarry within parts of Ontario that have been designated under the Aggregate Resources Act.

Class B Licence

A licence under the Aggregate Resources Act to allow excavation of 20,000 tonnes or less of aggregate annually from a pit or quarry within parts of Ontario that have been designated under the Aggregate Resources Act.

Crown Land

Ownership of land which is vested in the Crown or owned by the Province of Ontario.

Crushed Stone

Rock or stone mechanically crushed to specified sizes and grading.

Designated Area

An area of the Province identified by regulation under the Aggregate Resources Act where a person requires a licence for the excavation of aggregate from private land.

Disturbed Area

An area within a site that has been, or is being excavated to operate a pit or quarry, and has not been rehabilitated.

Gravel

Small stones and pebbles or a mixture of sand and small stones. More specifically, fragments of rock worn by the action of air and water, larger and coarser than sand. MTO specifications define gravel as unconsolidated granular material greater than 4.75mm.

Housing Starts

The number of housing units started where construction has advanced to 100 per cent of footings. In case of multiple dwellings, a "start" implies the commencement of individual structures.

Inactive Licence

A licence that has been revoked or surrendered prior to the end of the calendar year.

Licence

A licence for a pit or quarry issued under the Aggregate Resources Act allowing for the extraction of aggregate in designated areas.

Licensed Area

A specific area for which a licence has been issued for the extraction of mineral aggregates under the Aggregate Resources Act.

Pit

Land or land under water from which unconsolidated aggregate is being or has been excavated, and has not been rehabilitated.

Private Land

Land owned by an individual or corporation, as opposed to land which is owned by the Crown.

Progressive Rehabilitation

As per the requirements of the Aggregate Resources Act, sequential rehabilitation completed within reasonable time over disturbed land from which aggregate has been extracted. The rehabilitation is carried out according to the Act, the regulations, the site plan, and the conditions of the licence or permit during the period that aggregate is being extracted.

Pits & Quarries Control Act

An Act to manage and regulate mineral aggregate extraction in Ontario. The Act had been automatically repealed and replaced by the Aggregate Resources Act as of January 1, 1990.

Quarry

Land or land under water from which consolidated rock is or has been excavated and the site has not been rehabilitated.

Rehabilitation

To treat the land from which aggregate has been excavated to a pre-excitation condition or use, or to a condition compatible with adjacent land.

Royalty

A payment made to the Crown in recognition of the extraction of aggregates owned by the Crown. Under the Aggregate Resources Act, the royalty is set at a minimum of 50 cents per tonne. The Minister may set a higher rate or may allow exemption.

Sand

Any hard granular rock material finer than gravel and coarser than dust. MTO specifications define sand as granular material ranging in size from .075mm to 4.75 mm.

Wayside Permit

A permit issued to a public authority or a person who has a contract with a public authority for a temporary road project or an urgent project for which no alternative source of aggregate is available under licence or permit. A wayside permit expires 18 months from the date of issue or upon completion of the project, whichever comes first.

APPENDIX B

**HISTORICAL DESIGNATION OF PRIVATE LAND UNDER THE
PITS AND QUARRIES CONTROL ACT AND
THE AGGREGATE RESOURCES ACT**

(by Geographic Twp)

Designations under the Pits and Quarries Control Act (1971-1989)

DECEMBER 19, 1971

Adjala	Euphrasia	Nottawasaga
Albemarle	Flamborough East	Osprey
Albion	Flamborough West	Pelham
Amabel	Grantham	Reach
Ancaster	Grimsby North	Saltfleet
Artemesia	Holland	Stamford
Barton	Keppel	St. Edmunds
Beverly	Lindsay	St. Vincent
Caledon	London	Sydenham
Chinguacousy	Louth	Thorold
Clinton	Melancthon	Toronto Gore
Collingwood	Mono	Trafalgar
Derby	Mulmur	Westminster
Eastnor	Nassagaweya	West Nissouri
Erin	Nelson	Whitby
Esquesing	Niagara	Whitchurch

MARCH 3, 1972

Brock	Lobo	Pickering
East Whitby	Markham	Toronto
Gloucester	Nepean	Vaughan
Hallowell	Osgoode	

MAY 9, 1972

Brantford	Pittsburgh	South Dumfries
Guelph	Puslinch	Waterloo
Kingston	North Dumfries	

AUGUST 15, 1973

Anderdon	Dereham	Humberstone
Bertie	Dunn	Huntley
Blenheim	Eramosa	King
Brighton	Fitzroy	Malden
Clarke	Gosfield South	Manvers
Colchester North	Gosfield North	March
Colchester South	Haldimand	Mersea
Cramahe	Hamilton	Murray
Crowland	Harwich	Nichol
Darlington	Hope	North Cayuga

North Gower
North Oxford
Oneida
Orillia
Oro
Pilkington
Raleigh
Romney

Sidney
Sunnidale
Thurlow
Tilbury East
Tyendinaga
Uxbridge
Vespra
Walpole

Wellesley
West Oxford
Willoughby
Wilmot
Woodhouse
Woolwich
Yarmouth

FEBRUARY 15, 1974

Delaware
North Dorchester

MAY 17, 1974

Pelee

MAY 1, 1975

Alnwick
Amaranth
Arran
Arthur
Asphodel
Balfour
Bayham
Belmont
Bexley
Biddulph
Binbrook
Blandford
Blanshard
Blezard
Bowell
Broder
Burford
Caistor
Camden
Capreol
Cartwright
Cavan
Charlotteville
Chatham
Creighton
Cumberland
Denison
Dieppe
Dill
Douro
Dover
Dowling
Drury

Dryden
Dummer
East York
East Garafraxa
East Nissouri
East Luther
East Gwillimbury
East Oxford
East Zorra
Eldon
Emily
Ennismore
Essa
Etobicoke
Fairbank
Falconbridge
Fenelon
Flos
Gainsborough
Garson
Georgina
Glanford
Glenelg
Goulburn
Graham
Hanmer
Harvey
Houghton
Howard
Hutton
Innisfil
Levack
Lorne

Louise
Lumsden
MacLennan
Maidstone
Malahide
Mara
Mariposa
Marlborough
Maryborough
Matchedash
McKim
Medonte
Middleton
Minto
Morgan
Moulton
Neelon
Norman
North Monaghan
North Walsingham
North Norwich
North Gwillimbury
North York
Oakland
Onondaga
Ops
Orford
Otonabee
Peel
Percy
Proton
Rainham
Rama

Rawden
Rayside
Rochester
Sandwich, East
Sandwich, West
Scarborough
Scott
Scugog
Seneca
Seymour
Sherbrooke
Smith
Snider
South Walsingham

South Cayuga
South Dorchester
South Grimsby
South Norwich
South Monaghan
Sullivan
Tay
Tecumseh
Thorah
Tilbury, North
Tilbury, West
Tiny
Torbolton
Tosorontio

Townsend
Trill
Tuscarora
Verulam
Wainfleet
Waters
West Luther
West Garafraxa
West Gwillimbury
West Zorra
Windham
Wisner
York
Zone

APRIL 6, 1976

Great LaCloche Island
Little LaCloche Island

AUGUST 27, 1976

Avenge
Bosanquet
Carden

Korah
Parke
Prince

Rankin
St. Mary's
Tarentorus

JANUARY 1, 1981

Adelaide
Aldborough
All of the County of Perth
All of the County of Huron
All of the County of Lanark
Ameliasburgh
Athol
Bentinck
Brant
Brooke
Bruce
Carrick
City of Belleville
Culross
Dawn
Dunwich
E. Williams
Egremont
Elderslie
Elzevir and Grimsthorpe

Enniskillen
Euphemia
Exfrid
Greenock
Hillier
Hungerford
Huntingdon
Huron
Kincardine
Kinloss
Madoc
Marmora and Lake
McGillivray
Moore
Mosa
Normanby
North Marysburgh
Plympton
Sarnia
Saugeen

Separated Town of Trenton
Sombra
Sophiasburgh
South Marysburgh
Southwold
Town of Deseronto
Tudor
United Counties of Prescott
and Russell
United Counties of Stormont,
Dundas & Glengarry
United Counties of Leeds and
Grenville
Villages of Deloro, Frankford,
Madoc, Marmora, Stirling
and Tweed
W. Williams
Walford
Warwich
Wyoming

JULY 1, 1984

Storrington

Designations under the Aggregate Resources Act (Jan. 1, 1990)

APRIL 1, 1992

Adolphustown	Howe Island	Somerville
Amherst Island	Laxton	South Fredericksburgh
Bedford	Longford	Town of Napanee
Camden East	Loughborough	Villages of Bath and
Dalton	North Fredericksburgh	Newburgh
Digby	Portland	Wolfe Island
Ernestown	Richmond	

SEPTEMBER 1, 1993

Admaston		Towns of Arnprior and
Alice and Fraser	McNab	Renfrew
Bagot and Blithfield	Pembroke	Villages of Beachburg,
Bromley	Petawawa	Braeside, Cobden and
City of Pembroke	Ross	Petawawa
Horton	Stafford	Westmeath

JANUARY 1, 1998

Anderson	Gaudette	Ley
Appleby	Gough	Loughrin
Archibald	Hagar	Macdonald
Aweres	Hallam	May
Awrey	Harrow	McKinnon
Baldwin	Harty	Meredith and Aberdeen
Burwash	Haviland	Additional
Cartier	Hawley	Merritt
Cascaden	Hendrie	Mongowin
Casimir	Henry	Nairn
Chesley Additional	Herrick	Pennefather
Cleland	Hess	Ratter
Cosby	Hilton	Secord
Curtin	Hodgins	Servos
Delamere	Hoskin	Shakespeare
Dennis	Hyman	Shields
Deroche	Jarvis	St. Joseph
Duncan	Jennings	Street
Dunnet	Jocelyn	Tarbutt and Tarbutt
Eden	Johnson	Additional
Fenwick	Kars	Tilley
Fisher	Kehoe	Tilton
Foster	Laird	Tupper
Foy	Laura	VanKoughnet

DECEMBER 4, 1999

Village of Hilton Beach

JULY 22, 2004

Andre
Bostwick
Franchere
Groseilliers
Legarde

Levesque
Macaskill
Menzies
Michipicoten
Musquash

Rabazo
St. Germain
Warpula

Newly Designated Private Lands (Effective January 1, 2007)

1. Those parts of the County of Frontenac consisting of the townships of Central Frontenac and North Frontenac.
2. Those parts of the County of Renfrew consisting of,
 - a) the Township of Bonnechere Valley, the Township of Brudenell, Lyndoch and Raglan, the Township of Head, Clara and Maria, the Township of Killaloe, Hagarty and Richards, the Township of Madawaska Valley and the Township of North Algona Wilberforce;
 - b) the Township of Greater Madawaska, except the townships of Bagot and Blythfield; and
 - c) the towns of Deep River and Laurentian Hills.
3. Those parts of the County of Lennox and Addington consisting of,
 - a) the Township of Addington Highlands; and
 - b) the Township of Stone Mills, except the Township of Camden East.
4. Those parts of the County of Hastings consisting of,
 - a) the Town of Bancroft;
 - b) the townships of Carlow/Mayo, Faraday, Limerick and Wollaston;
 - c) the Municipality of Hastings Highlands; and
 - d) the Township of Tudor and Cashel, except the Township of Tudor.
5. Those parts of the County of Peterborough consisting of,
 - a) the Township of Galway-Cavendish-Harvey, except the Township of Harvey;
 - b) the Township of Havelock-Belmont-Methuen, except the Township of Belmont and the Town of Havelock; and
 - c) the Township of North Kawartha.
6. All of the County of Haliburton.
7. Those parts of the Territorial District of Nipissing consisting of,
 - a) the Town of Mattawa;
 - b) the City of North Bay;
 - c) the Municipality of West Nipissing;
 - d) the townships of Bonfield, Calvin, Chisholm, East Ferris, Mattawan, Papineau- Cameron and South Algonquin; and
 - e) the geographical townships of Airy, Anglin, Antoine, Ballantyne, Barron, Biggar, Bishop, Blyth, Boulter, Bower, Boyd, Bronson, Butler, Butt, Canisbay, Charlton, Clancy, Clarkson, Commanda, Deacon, Devine, Dickson, Eddy, Edgar, Finlayson, Fitzgerald, French, Freswick, Garrow, Gladman, Guthrie, Hammell, Hunter, Jocko, Lauder, Lyman, Lister, Lockhart, Master, McCraney, McLaughlin, McLaren, Merrick, Mulock, Niven, Notman, Olig, Osborne, Osler, Paxton, Peck, Pentland, Phelps, Poitras, Preston, Sproule, Stewart, Stratton, Thistle, White and Wilkes

8. All parts of the Territorial District of Parry Sound consisting of,
 - a) the townships of Armour, Carling, Joly, Machar, McKellar, McMurrich/Monteith, Nipissing, Perry, Ryerson, Seguin, Strong and The Archipelago;
 - b) the municipalities of Powassan, Magnetawan, McDougall, Callander and Whitestone;
 - c) the towns of Kearney and Parry Sound;
 - d) the villages of Burk's Falls, South River and Sundridge; and
 - e) the geographical townships of Bethune, Blair, Brown, East Mills, Gurd, Hardy, Harrison, Henvey, Laurier, Lount, McConkey, Mowat, Patterson, Pringle, Proudfoot, Shawanaga, Wallbridge and Wilson.

9. All parts of the Territorial District of Muskoka consisting of,
 - a) the towns of Bracebridge, Gravenhurst and Huntsville;
 - b) the townships of Georgian Bay, Lake of Bays and Muskoka Lakes; and
 - c) the District Municipality of Muskoka.

10. Those parts of the Territorial District of Sudbury consisting of,
 - a) the Municipality of French River, except the geographical townships of Cosby, Delamere and Hoskin;
 - b) the Township of Sables – Spanish River, except the geographical townships of Gough, Hallam, Harrow, May, McKinnon and Shakespeare;
 - c) the Town of Killarney;
 - d) the Municipality of Killarney;
 - e) those parts of the City of Greater Sudbury consisting of the geographical townships of Aylmer, Fraleck, Hutton, MacKelcan, Parkin, Rathburn and Scadding; and
 - f) the geographical townships of Bevin, Caen, Carlyle, Cox, Davis, Dunlop, Halifax, Humboldt, Janes, Kelly, Leinster, McCarthy, Munster, Porter, Roosevelt, Shibananing, Truman, Tyrone and Waldie.

11. All parts of the Territorial District of Manitoulin, except Great LaCloche Island and Little LaCloche Island.

12. Those parts of the Territorial District of Algoma consisting of,
 - a) the towns of Blind River, Bruce Mines and Thessalon;
 - b) the City of Elliot Lake;
 - c) the townships of The North Shore, Plummer Additional and Shedden;
 - d) the Municipality of Huron Shores; and
 - e) the geographical townships of Aberdeen, Boon, Bridgland, Brule, Cadeau, Curtis, Dablon, Daumont, Deagle, Gaiashk, Galbraith, Gerow, Gillmor, Grenoble, Hughes, Hurlburt, Hynes, Kane, Kincaid, Lamming, Laverendrye, Marne, McMahan, Montgomery, Morin, Nicolet, Norberg, Palmer, Parkinson, Patton, Peever, Plummer, Rix, Rose, Ryan, Slater, Smilsky, Wells, Whitman and Wishart.

13. Those parts of the Territorial District of Thunder Bay consisting of,
 - a) the City of Thunder Bay;
 - b) the Municipality of Neebing; and
 - c) the townships of Conmee, Dorion, Gillies, O'Conner, Oliver Paipoonge and Shuniah.

Please refer to the Revised Regulations of Ontario for accuracy.

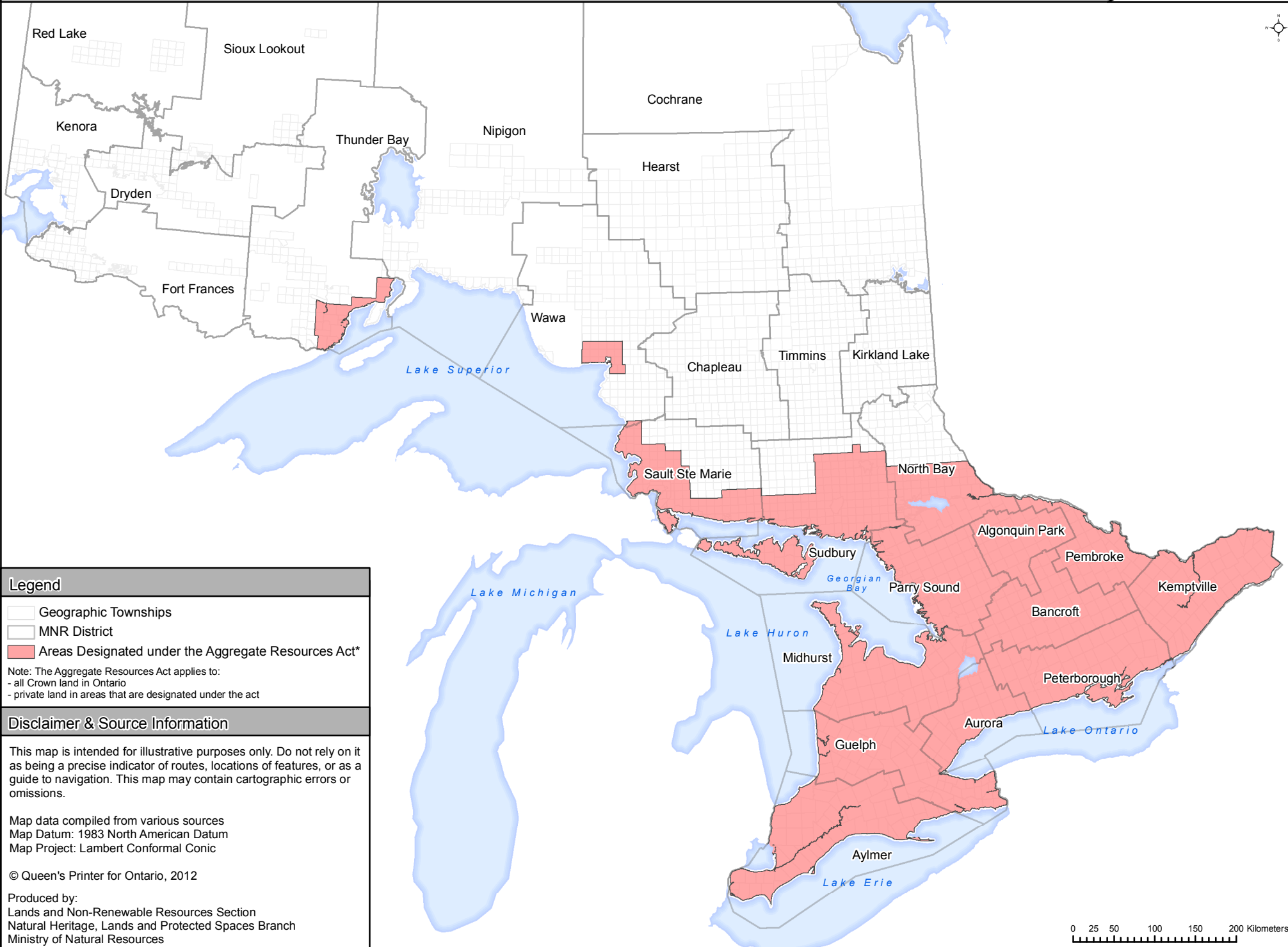
CANADIAN PORTLAND CEMENT ASSOCIATION* GEOGRAPHIC AREAS

* Now CAC - Cement Association of Canada



Area 1 Southwest	Area 2 Peninsula	Area 3 West Central	Area 4 GTA	Area 5 East Central	Area 6 East	Area 7 Northeast	Area 8 Northwest
Essex	Niagara	Bruce	Metro Toronto	Kawartha Lakes	Prescott & Russell	Nipissing	Algoma
Chatham-Kent	Brant	Grey	Peel	Peterborough	Leeds & Grenville	Parry Sound	Thunder Bay
Lambton	Haldimand	Simcoe	York	Haliburton	Stormont, Dundas, & Glengarry	Timiskaming	Kenora
Elgin	Norfolk	Dufferin	Durham	Northumberland	Frontenac	Cochrane	Rainy River
Middlesex	Hamilton	Wellington	Halton	Hastings	Greater Ottawa	Sudbury District	
Huron		Waterloo		Prince Edward	Lanark	Greater Sudbury	
Perth				Muskoka	Renfrew	Manitoulin	
Oxford					Lennox & Addington		

Areas Designated under the Aggregate Resources Act



Legend

- Geographic Townships
- MNR District
- Areas Designated under the Aggregate Resources Act*

Note: The Aggregate Resources Act applies to:
- all Crown land in Ontario
- private land in areas that are designated under the act

Disclaimer & Source Information

This map is intended for illustrative purposes only. Do not rely on it as being a precise indicator of routes, locations of features, or as a guide to navigation. This map may contain cartographic errors or omissions.

Map data compiled from various sources
Map Datum: 1983 North American Datum
Map Project: Lambert Conformal Conic

© Queen's Printer for Ontario, 2012

Produced by:
Lands and Non-Renewable Resources Section
Natural Heritage, Lands and Protected Spaces Branch
Ministry of Natural Resources





Ontario Ministry of Natural Resources and Forestry - Contact Information

Aggregate Inspectors/Officers

		<u>TELEPHONE</u>	<u>EXT</u>	<u>FAX</u>
Algonquin	Henry Checko	613-637-2780		613-637-2864
Aurora District	Emily Moore Kayla Stephenson	905-713-7396 905-713-7388		905-713-7361 905-713-7361
Aylmer District	Stephen Douglas Darryl Hagman	519-773-4716 519-773-4747		519-773-9014 519-773-9014
Bancroft District Haliburton Highlands Minden	Paul Shalla Jeff Schosser Scott Bird	613-332-3940 705-646-5526 705-286-5223	208	613-332-0608 705-646-8372 705-286-4355
Cochrane	Chris Waslyk	705-272-7194		705-272-7183
Chapleau	Andrew Orton	705-864-3153		705-864-0681
Dryden	Mike Durocher	807-223-7552		807-223-2825
Espanola/Manitoulin	Prabin Sharma	705-564-7863		705-564-7879
Fort Frances	Sonya Zuber	807-274-8609		807-274-4438
Guelph District	Diane Schwier Seana Richardson	519-826-4930 519-826-4927		519-826-4929 519-826-4929
Guelph District, Huron/Perth Office	Laura Warner	519-482-3311		519-482-5031
Hearst	Veronique Felardeau	705-372-2222		705-272-7184
Kemptville District	Christopher Bierman Jennifer Tighe Olissia Stechishen	613-258-8264 613-258-8364 613-258-8207		613-258-3920 613-258-3920 613-258-3920
Kenora	Sonya Zuber	807-274-8609		807-274-4438
Kirkland Lake	Bill Keegan	705-235-1335		705-235-1377
Midhurst District Midhurst District, Owen Sound Office	Brent Armstrong Jason McLay	705-725-7532 519-371-8470		705-725-7584 519-372-3305
Nipigon	Herb Neubrand	807-887-5028		807-854-0335
North Bay	Remi Labreche	705-475-5531		705-475-5500
Parry Sound Bracebridge	Sid Larson Jeff Schosser	705-773-4233 705-646-5526		705-746-8828 705-646-8372
Pembroke District	Donald Lewis Kristen Wagner	613-732-5516 613-732-5525		613-732-2972 613-732-2972
Peterborough District Peterborough District, Kingston Office	Pankaj Vaishnav Rose Copland Darren Bonnenberg Todd Baker	705-755-3109 705-755-3110 613-531-5735 613-531-5712		705-755-3125 705-755-3125 613-531-5730 613-531-5730
Red Lake	Mike Durocher	807-223-7552		807-223-2825
Sioux Lookout	Mike Durocher	807-223-7552		807-223-2825
Sudbury	Kendall Haddow	705-564-7855		705-564-7879
Sault Ste. Marie	Steve Acorn	705-941-5132		705-949-6450
Thunder Bay	Calinda Manning	807-475-1167		807-475-1527
Timmins	Bill Keegan	705-235-1335		705-235-1377
Wawa	Corey Young	705-856-4751		705-856-7511

Go to <http://www.toarc.com/permits-licenses/mnr-contacts.html>
for the most current listing of MNR Inspectors.