



AGGREGATE RESOURCES STATISTICS IN ONTARIO

PRODUCTION STATISTICS 2016

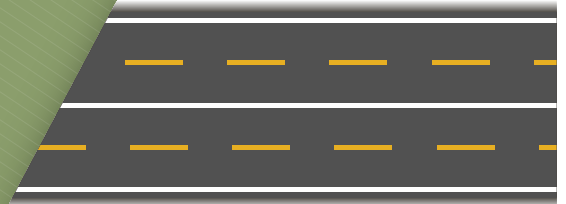
DID YOU KNOW?

1,760

TRUCKLOADS



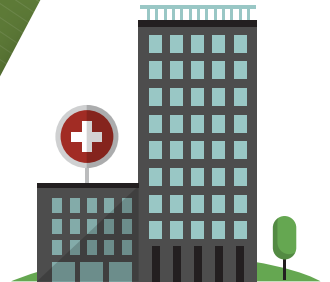
1KM



1 km of 4-lane highway

3,760

TRUCKLOADS



A 32,000m² hospital

4,560

TRUCKLOADS



1 km of subway line

14 TONNES



Every Ontarian uses
14 TONNES of stone,
sand and gravel each year.

AGGREGATE RESOURCES STATISTICS IN ONTARIO

PRODUCTION STATISTICS

2016

READER'S NOTE

The information in this document is based on production statistics reported to April 30, 2017. This document will be revised following December 31st, 2017 and will be considered final at that time. It is believed that aggregate production for 2016 is substantially reported in this document and gross numbers should remain unchanged in the final version. However, some numbers will change at the municipal level.

Prepared by

The Ontario Aggregate Resources Corporation

TABLE OF CONTENTS

Overview	1
----------------	---

TABLES AND GRAPHS

1. Aggregate Production in Ontario 2004-2016	2
2. Licence and Wayside Permit Production by Lower Tier Municipality	3
3. Licence and Wayside Permit Production by Upper Tier Municipality	11
4. The Top 10 Producing Municipalities	12
5. Number and Type of Aggregate Licences	13
6. Licenced Aggregate Production by Commodity Type (MNRF Districts)....	14
7. Aggregate Permit Production by Commodity Type (MNRF Districts)	15
8. Aggregate Permit Production by Commodity Type (by year)	16
9. Aggregate Permit & Licence Production (CAC Geographic Areas)	17
10. Rehabilitation of Licenced Aggregate Sites	18
11. Number and Type of Aggregate Permits	19

APPENDICES

- A. Glossary of Terms
- B. Historical Designation of Private Land under the Pits and Quarries Control Act and the Aggregate Resources Act
- C. CPCA (now CAC) Geographic Areas
- D. Map of Areas Designated under the Aggregate Resources Act
- E. Listing of MNRF Aggregate Officers of Ontario

Additional copies of this report may be obtained at a cost of \$5.00 each to cover preparation and postage from:

The Ontario Aggregate Resources Corporation
1001 Champlain Avenue, Suite 103
Burlington, ON L7L 5Z4
Toll Free 1-866-308-6272
or Telephone (905) 319-7424
or Fax (905) 319-7423

Cette publication spécialisée n'est disponible qu'en anglais

For internal use only.

*In order for TOARC to better meet the needs of those using this publication,
we welcome any comments or suggestions.*

You may send your comments/suggestions to the attention of John Dorlas,
Database Administrator at the above address or fax number or contact him directly via
email, jcdorlas@toarc.com

AGGREGATE RESOURCES STATISTICS IN ONTARIO

Overview

Aggregate resources are used in the everyday lives of all Ontario residents, and make up an integral part of our roads, sidewalks, sewers, subway tunnels and airports, as well as our homes, offices, hospitals, schools and shopping centres. On average, Ontarians use about 14 tonnes of aggregate per person per year.

The aggregate industry plays a foundational role within the Ontario economy. The economic activity generated by the industry begins with the aggregate production itself but also feeds industries which receive and use the raw materials: including cement and concrete products, other aggregate-based products (asphalt, chemical, clay, glass, etc.) and construction.

In 2016, there were 3,696 licences for pits and quarries on private land in areas designated under the Aggregate Resources Act (refer to Appendix D – Map of Areas Designated), 2,586 aggregate permits on Crown land and 2 wayside permits.

Aggregate Production

Overall production of mineral aggregates in 2016 totaled approximately 154 million tonnes, down 7 million tonnes or 4.3% from the previous year. Production from licenced operations was down 6 million tonnes or 4.0% compared to 2015. Forestry Aggregate Pits (formerly Category 14) pit production has remained the same. Wayside permit production increased on small volumes (.35 million in 2016 compared to .15 million in 2015). Production from aggregate permits on Crown Land decreased 11.8% from 2015 (6.7 million in 2016 from 7.6 million tonnes in 2015).

Note: Totals and percentage changes are based on rounded numbers from Table 1.

Table 1

AGGREGATE PRODUCTION IN ONTARIO - 2004 - 2016
(rounded to nearest million tonnes)

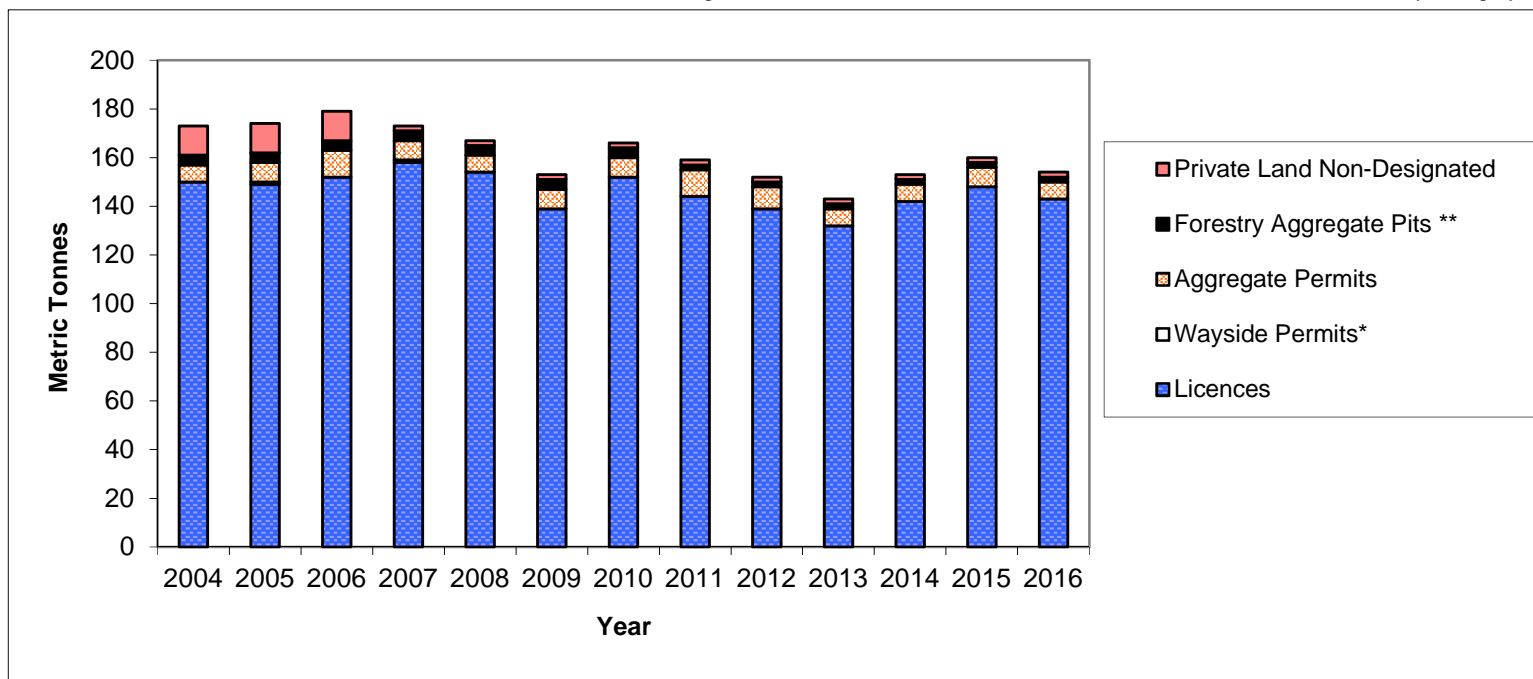
	2004	2005	2006	2007	2008	2009	2010	2011	2012	2013	2014	2015	2016
Licences	150	149	152	158	154	139	152	144	139	132	142	148	143
Wayside Permits*	0	1	0	1	0	0	0	0	0	0	0	0	0
Aggregate Permits	7	8	11	8	7	8	8	11	9	7	7	8	7
Forestry Aggregate Pits **	4	4	4	4	4	4	4	2	2	2	2	2	2
Private Land Non-Designated (estimated)	12	12	12	2	2	2	2	2	2	2	2	2	2
ONTARIO TOTAL	173	174	179	173	167	153	166	159	152	143	153	160	154

*Wayside Permit production is reported as the 'total applied for' tonnage of all permits issued, adjusted where actual tonnages for completed contracts are known.

*Actual production for Wayside Permits was .1 million tonnes for 2004, .3 million tonnes for 2006

.1 million tonnes for 2008, .2 million tonnes for 2009, zero tonnes for 2010 through 2014, .15 million tonnes for 2015, .35 million tonnes for 2016; ** Formerly Category 14

2



Production Statistics Report
Table 2 Lower Tier Grouping Guidelines

The guiding principal is to not disclose the confidential information of a single client's tonnage.

1. There must be a least 3 clients with a minimum of 2 reporting tonnage, each with licenses, in any municipal (lower) tier that appears in the stats report.
2. If the above guideline can't be met then the grouping of lower tiers is required based on the following rules:
 - a. Upper tiers with multiple lower tier groups of 2 or less must be combined for the 3 client minimum lower tier grouping provided there are at least 2 clients reporting tonnage.
 - b. The preferred criteria for determining groups will be based on geographical proximity.
 - c. A single lower tier reporting ZERO tonnage is not reported if it is not required for the above minimum 3 client grouping.
 - d. If geographic proximity can't be resolved then historical (grouping of past stats reports) will determine grouping.

Table 2

**LICENCE AND WAYSIDE PERMIT PRODUCTION
BY LOWER TIER MUNICIPALITY**

Municipality	Licences (Reported in Metric Tonnes)	Wayside Permits	Total
<i>Algoma District</i>			
Algoma District, Unorganized	133,048.00		133,048.00
Blind River, Town of	38,430.28		38,430.28
Bruce Mines, Town of/Plummer Additional Tp	1,480,825.05		1,480,825.05
Elliot Lake, City of/Spanish, Town of/The North Shore, Tp	59,376.83		59,376.83
Hilton Tp	60,677.00		60,677.00
Huron Shores, Municipality of	494,136.00		494,136.00
Jocelyn Tp	12,273.16		12,273.16
Johnson Tp/Tarbutt & Tarbutt Add'l Tp/St. Joseph Tp	38,218.45		38,218.45
Macdonald, Meredith & Aberdeen Add'l Tp	12,235.63		12,235.63
Sault Ste. Marie, City of/Prince Tp	466,453.52		466,453.52
Sub-Total	2,795,673.92	0.00	2,795,673.92
<i>Brant</i>			
Brant, County of/Brantford, City of	1,741,974.64		1,741,974.64
Sub-Total	1,741,974.64	0.00	1,741,974.64
<i>Bruce</i>			
Arran-Elderslie, Municipality of	217,131.49		217,131.49
Brockton, Municipality of	48,477.97		48,477.97
Huron-Kinloss Tp	364,249.98		364,249.98
Kincardine, Municipality of	50,078.90		50,078.90
Northern Bruce Peninsula, Municipality of	140,977.10		140,977.10
Saugeen Shores, Town of	146,456.20		146,456.20
South Bruce Peninsula, Town of	233,622.95		233,622.95
South Bruce, Municipality of	290,896.74		290,896.74
Sub-Total	1,491,891.33	0.00	1,491,891.33
<i>Chatham-Kent</i>			
Chatham-Kent, Municipality of	286,740.43		286,740.43
Sub-Total	286,740.43	0.00	286,740.43
<i>Dufferin</i>			
Amaranth Tp/East Luther Grand Valley Tp	63,794.00		63,794.00
East Garafraxa Tp	1,026,918.57		1,026,918.57
Melancthon Tp	838,504.98		838,504.98
Mono Tp	165,018.85		165,018.85
Mulmur Tp	122,921.43		122,921.43
Sub-Total	2,217,157.83	0.00	2,217,157.83
<i>Durham</i>			
Brock Tp	1,101,618.55		1,101,618.55
Clarington, Municipality of	5,474,470.07		5,474,470.07
Oshawa, City of/Scugog Tp	160,350.23		160,350.23
Uxbridge Tp	2,799,027.14		2,799,027.14
Sub-Total	9,535,465.99	0.00	9,535,465.99
<i>Elgin</i>			
Bayham/West Elgin, Municipality of/Malahide Tp	176,243.32		176,243.32
Central Elgin, Municipality of	266,670.61		266,670.61
Sub-Total	442,913.93	0.00	442,913.93

Table 2

**LICENCE AND WAYSIDE PERMIT PRODUCTION
BY LOWER TIER MUNICIPALITY**

Municipality	Licences (Reported in Metric Tonnes)	Wayside Permits	Total
Essex			
Amherstburg, Town of/Leamington, Municipality of/Pelee Tp	1,474,951.07		1,474,951.07
Kingsville, Town of	439,085.51		439,085.51
Sub-Total	1,914,036.58	0.00	1,914,036.58
Frontenac			
Central Frontenac Tp	57,845.16		57,845.16
Frontenac Islands Tp	32,425.48		32,425.48
Kingston, City of	925,657.16		925,657.16
North Frontenac Tp	110,474.81		110,474.81
South Frontenac Tp	412,130.22		412,130.22
Sub-Total	1,538,532.83	0.00	1,538,532.83
Greater Sudbury			
Greater Sudbury, City of	2,636,693.11		2,636,693.11
Sub-Total	2,636,693.11	0.00	2,636,693.11
Grey			
Chatsworth Tp	405,473.15		405,473.15
Georgian Bluffs, Tp	397,960.27		397,960.27
Grey Highlands, Municipality of	975,841.52		975,841.52
Meaford, Municipality of	491,548.41		491,548.41
Southgate Tp	470,397.86		470,397.86
The Blue Mountains, Town of	208,396.76		208,396.76
West Grey, Municipality of	790,509.01		790,509.01
Sub-Total	3,740,126.98	0.00	3,740,126.98
Haldimand			
Haldimand, County of	1,120,916.25		1,120,916.25
Sub-Total	1,120,916.25	0.00	1,120,916.25
Haliburton			
Algonquin Highlands, Tp	46,753.80		46,753.80
Dysart et al, Tp	202,893.46		202,893.46
Highlands East, Tp	16,540.49		16,540.49
Minden Hills, TP	104,554.54		104,554.54
Sub-Total	370,742.29	0.00	370,742.29
Halton			
Burlington, City of/Halton Hills, Town of	5,344,756.95		5,344,756.95
Milton, Town of	1,226,448.47		1,226,448.47
Sub-Total	6,571,205.42	0.00	6,571,205.42
Hamilton			
Hamilton, City of	5,944,526.14		5,944,526.14
Sub-Total	5,944,526.14	0.00	5,944,526.14

Table 2

**LICENCE AND WAYSIDE PERMIT PRODUCTION
BY LOWER TIER MUNICIPALITY**

Municipality	Licences (Reported in Metric Tonnes)	Wayside Permits	Total
Hastings			
Bancroft, Town of	12,436.63		12,436.63
Belleville, City of	661,344.46		661,344.46
Carlo/Mayo Tp	16,967.52		16,967.52
Centre Hastings, Municipality of	271,966.95		271,966.95
Faraday Tp	22,362.36		22,362.36
Hasting Highlands, Municipality of	251,718.92		251,718.92
Limerick Tp	23,804.54		23,804.54
Madoc Tp	626,068.31		626,068.31
Marmora & Lake, Municipality of/Sterling-Rawdon Tp	8,372.34		8,372.34
Quinte West, City of	571,994.69		571,994.69
Tweed, Municipality of	65,982.44		65,982.44
Tyendinaga Tp	229,501.10		229,501.10
Wollaston Tp	46,100.09		46,100.09
Sub-Total	2,808,620.35	0.00	2,808,620.35
Huron			
Ashfield-Colborne-Wawanosh Tp	888,573.09		888,573.09
Bluewater, Municipality of	25,194.00		25,194.00
Central Huron, Municipality of	366,134.96	200,000.00	566,134.96
Howick Tp	563,409.39		563,409.39
Huron East, Municipality of	664,954.66		664,954.66
Morris-Turnberry, Municipality of	207,745.77		207,745.77
North Huron Tp	108,969.11		108,969.11
South Huron, Municipality of	97,512.80		97,512.80
Sub-Total	2,922,493.78	200,000.00	3,122,493.78
Kawartha Lakes			
Kawartha Lakes, City of	6,496,319.99		6,496,319.99
Sub-Total	6,496,319.99	0.00	6,496,319.99
Lambton			
Lambton Shores, Municipality of	186,048.17		186,048.17
Warwick Tp/Plympton-Wyoming, Town of	294,558.04		294,558.04
Sub-Total	480,606.21	0.00	480,606.21
Lanark			
Beckwith Tp/Drummond-North Elmsley Tp	159,460.81		159,460.81
Lanark Highlands Tp	1,087,745.03		1,087,745.03
Mississippi Mills, Town of	384,555.94		384,555.94
Montague Tp	116,492.88		116,492.88
Tay Valley Tp	26,080.44		26,080.44
Sub-Total	1,774,335.10	0.00	1,774,335.10

Table 2

**LICENCE AND WAYSIDE PERMIT PRODUCTION
BY LOWER TIER MUNICIPALITY**

Municipality	Licences (Reported in Metric Tonnes)	Wayside Permits	Total
Leeds & Grenville			
Athens Tp/Front of Yonge Tp/Leeds and Thousand Islands Tp	226,268.93		226,268.93
Augusta Tp	70,072.44		70,072.44
Edwardsburgh-Cardinal Tp	64,765.43		64,765.43
Elizabethtown-Kitley Tp/Merrickville-Wolford, Village of	324,894.65		324,894.65
Leeds and Thousand Islands Tp	371,622.68		371,622.68
North Grenville Tp	784,948.21		784,948.21
Rideau Lakes Tp	127,530.72		127,530.72
Sub-Total	1,970,103.06	0.00	1,970,103.06
Lennox & Addington			
Addington Highlands Tp	10,390.07		10,390.07
Greater Napanee, Town of	188,057.55		188,057.55
Loyalist Tp	1,758,540.64		1,758,540.64
Stone Mills Tp	51,497.89		51,497.89
Sub-Total	2,008,486.15	0.00	2,008,486.15
Manitoulin District			
Assignack, Tp/Billings Tp	12,587.00		12,587.00
Central Manitoulin Tp	48,202.76		48,202.76
Gordon/Barrie Island/Burpee & Mills, Tp/Cockburn Island, Tp	27,823.38		27,823.38
Northeastern Manitoulin & The Islands	142,610.89		142,610.89
Tehkummah, Tp	37,124.88		37,124.88
Unorganized - Manitoulin D	2,692,000.07		2,692,000.07
Sub-Total	2,960,348.98	0.00	2,960,348.98
Middlesex			
Adelaide Metcalfe Tp/Strathroy-Caradoc Tp	128,410.16		128,410.16
London, City of	736,605.85		736,605.85
Lucan Biddulph Tp/North Middlesex, Municipality of	56,275.94		56,275.94
Middlesex Centre Tp	224,063.98		224,063.98
Thames Centre, Municipality of	2,669,200.72		2,669,200.72
Sub-Total	3,814,556.65	0.00	3,814,556.65
Muskoka			
Bracebridge	693,207.11		693,207.11
Georgian Bay	6,384.50		6,384.50
Gravenhurst	137,244.69		137,244.69
Huntsville	967,455.73		967,455.73
Lake of Bays, Tp	104,097.20		104,097.20
Muskoka Lakes, Tp	249,396.81		249,396.81
Sub-Total	2,157,786.04	0.00	2,157,786.04
Niagara			
Fort Erie, Town of/Pelham, Town of/Port Colborne, City of/ Wainfleet Tp	2,489,458.33		2,489,458.33
Lincoln, Town of/Niagara-on-the-Lake, Town of	1,848,553.01		1,848,553.01
Niagara Falls, City of	766,664.34		766,664.34
Sub-Total	5,104,675.68	0.00	5,104,675.68

Table 2

**LICENCE AND WAYSIDE PERMIT PRODUCTION
BY LOWER TIER MUNICIPALITY**

Municipality	Licences (Reported in Metric Tonnes)	Wayside Permits	Total
<i>Nipissing District</i>			
Bonfield Tp/Calvin Tp	33,268.08		33,268.08
Calvin Tp/East Ferris, Municipality of	20,671.81		20,671.81
Chisholm Tp	29,262.01		29,262.01
Mattawan Tp/South Algonquin Tp/Unorganized - Nippissing D	16,047.62		16,047.62
North Bay, City of	463,021.02		463,021.02
Papineau-Cameron Tp	33,262.40		33,262.40
West Nipissing, Municipality of	358,280.69		358,280.69
Sub-Total	953,813.63	0.00	953,813.63
<i>Norfolk</i>			
Norfolk, County of	653,093.56		653,093.56
Sub-Total	653,093.56	0.00	653,093.56
<i>Northumberland</i>			
Alnwick-Haldimand Tp	522,060.52		522,060.52
Brighton, Municipality of	340,385.27		340,385.27
Cramahe Tp	2,124,316.87		2,124,316.87
Hamilton Tp	134,978.42		134,978.42
Port Hope, Municipality of	46,831.00		46,831.00
Trent Hills, Municipality of	260,714.90		260,714.90
Sub-Total	3,429,286.98	0.00	3,429,286.98
<i>Ottawa</i>			
Ottawa, City of	8,692,301.39		8,692,301.39
Sub-Total	8,692,301.39	0.00	8,692,301.39
<i>Oxford</i>			
Blandford-Blenheim Tp	614,605.43		614,605.43
East Zorra-Tavistock Tp/Norwich Tp	190,561.64		190,561.64
South-West Oxford Tp	953,990.18		953,990.18
Zorra Tp	4,674,364.56		4,674,364.56
Sub-Total	6,433,521.81	0.00	6,433,521.81
<i>Parry Sound District</i>			
Armour Tp/Burks Falls, Village of	46,944.73		46,944.73
Callander, Municipality of	125,146.00		125,146.00
Carling Tp/The Archipelago Tp	17,037.97		17,037.97
Joly Tp	57,391.70		57,391.70
Kearney, Town of	14,422.00		14,422.00
Macher Tp	57,565.64		57,565.64
Magnetawan, Municipality of	142,064.12		142,064.12
McDougall Tp/Parry Sound, Town of	39,784.51		39,784.51
McKeller Tp	6,472.92		6,472.92
McMurrich-Monteith Tp	19,979.00		19,979.00
Nipissing Tp	22,340.00		22,340.00
Perry Tp	37,580.71		37,580.71
Powassan, Municipality of	204,143.88		204,143.88
Ryerson Tp	24,880.15		24,880.15
Seguin Tp	530,038.03		530,038.03
Strong Tp	5,504.92		5,504.92
Unorganized - Parry Sound	150,770.47		150,770.47
Whitestone The Municipality of	21,073.92		21,073.92
Sub-Total	1,523,140.67	0.00	1,523,140.67

Table 2

**LICENCE AND WAYSIDE PERMIT PRODUCTION
BY LOWER TIER MUNICIPALITY**

Municipality	Licences (Reported in Metric Tonnes)	Wayside Permits	Total
<i>Peel</i>			
Caledon, Town of	2,462,283.13	150,000.00	2,612,283.13
Sub-Total	2,462,283.13	150,000.00	2,612,283.13
<i>Perth</i>			
Perth East Tp	606,563.20		606,563.20
Perth South Tp/St. Marys, Separated Town of	1,625,809.10		1,625,809.10
West Perth Tp	393,278.84		393,278.84
Sub-Total	2,625,651.14	0.00	2,625,651.14
<i>Peterborough</i>			
Asphodel-Norwood Tp	142,764.63		142,764.63
Cavan-Millbrook-North Monaghan Tp	97,903.06		97,903.06
Douro-Dummer Tp	515,219.30		515,219.30
Havelock-Belmont-Methuen Tp	1,072,453.91		1,072,453.91
North Kawartha Tp	5,934.85		5,934.85
Otonabee South Monaghan Tp	324,252.05		324,252.05
Selwyn Tp	308,401.22		308,401.22
Trent Lakes, Municipality of	674,409.25		674,409.25
Sub-Total	3,141,338.27	0.00	3,141,338.27
<i>Prescott & Russell</i>			
Alfred & Plantagenet Tp	265,593.80		265,593.80
Champlain Tp	644,324.01		644,324.01
Clarence-Rockland, City of	110,316.32		110,316.32
East Hawkesbury Tp	17,014.50		17,014.50
Russell Tp	93,854.94		93,854.94
The Nation, Municipality of	274,678.21		274,678.21
Sub-Total	1,405,781.78	0.00	1,405,781.78
<i>Prince Edward Co</i>			
Prince Edward, County of	1,629,938.90		1,629,938.90
Sub-Total	1,629,938.90	0.00	1,629,938.90
<i>Renfrew</i>			
Admaston-Bromley Tp/Renfrew, Town of	140,931.90		140,931.90
Bonnechere Valley Tp	90,434.16		90,434.16
Brudenell, Lyndoc and Raglan Tp	43,418.62		43,418.62
Deep River Tp/Head, Clara & Maria Tp	2,434.00		2,434.00
Greater Madawaska Tp	11,100.00		11,100.00
Horton Tp	326,988.66		326,988.66
Killaloe, Hagarty and Richards Tp	60,104.14		60,104.14
Laurentian Hills	86,437.14		86,437.14
Laurentian Valley Tp	340,379.88		340,379.88
Madawaska Valley	61,418.58		61,418.58
McNab-Braeside Tp	300,390.05		300,390.05
North Algona-Wilberforce Tp	29,646.37		29,646.37
Petawawa, Town of	267,080.96		267,080.96
Whitewater Region Tp	186,602.85		186,602.85
Sub-Total	1,947,367.31	0.00	1,947,367.31

Table 2

**LICENCE AND WAYSIDE PERMIT PRODUCTION
BY LOWER TIER MUNICIPALITY**

Municipality	Licences (Reported in Metric Tonnes)	Wayside Permits	Total
<i>Simcoe</i>			
Adjala-Tosorontio Tp/New Tecumseth, Town of	102,313.63		102,313.63
Clearview Tp	1,086,880.25		1,086,880.25
Collingwood, Town of/Essa Tp/Innisfil, Town of	100,456.28		100,456.28
Midland, Town of/Penetanguishine, Town of/	251,054.02		251,054.02
Oro-Medonte Tp	2,689,530.14		2,689,530.14
Ramara Tp	2,480,375.35		2,480,375.35
Severn Tp	3,468,712.36		3,468,712.36
Springwater Tp	1,030,181.10		1,030,181.10
Tay Tp	120,585.43		120,585.43
Tiny Tp	88,207.83		88,207.83
Sub-Total	11,418,296.39	0.00	11,418,296.39
<i>Stormont, Dundas & Glengarry</i>			
North Dundas Tp	502,354.29		502,354.29
North Glengarry Tp	66,245.96		66,245.96
North Stormont Tp	1,028,639.02		1,028,639.02
South Dundas Tp	259,426.68		259,426.68
South Glengarry Tp	204,850.33		204,850.33
South Stormont Tp	738,534.24		738,534.24
Sub-Total	2,800,050.52	0.00	2,800,050.52
<i>Sudbury District</i>			
Baldwin Tp	54,625.56		54,625.56
French River, Municipality of	81,733.90		81,733.90
Killarny, Municipality of/Nairn & Hyman Tp	6,362.86		6,362.86
Markstay-Warren, Municipality of	33,303.48		33,303.48
Sables Spanish Rivers Tp/Espanola, Town of	54,679.95		54,679.95
Sudbury District, Unorganized	367,328.20		367,328.20
Sub-Total	598,033.95	0.00	598,033.95
<i>Thunder Bay District</i>			
Conmee, Tp	285,208.56		285,208.56
Neebing, Municipality of	19,733.36		19,733.36
Oliver Paipoonge, Municipality of/Thunder Bay, City of	219,225.17		219,225.17
Shuniah, Tp	226,850.47		226,850.47
Thunder Bay District, Unorganized	229,494.05		229,494.05
Sub-Total	980,511.61	0.00	980,511.61
<i>Waterloo</i>			
Cambridge, City of/Kitchener, City of	156,719.05		156,719.05
North Dumfries Tp	5,476,571.14		5,476,571.14
Wellesley Tp	1,448,378.92		1,448,378.92
Wilmot Tp	1,561,587.36		1,561,587.36
Woolwich Tp	336,319.40		336,319.40
Sub-Total	8,979,575.87	0.00	8,979,575.87

Table 2

**LICENCE AND WAYSIDE PERMIT PRODUCTION
BY LOWER TIER MUNICIPALITY**

Municipality	(Reported in Metric Tonnes)	Licences	Wayside Permits	Total
Wellington				
Centre Wellington Tp		811,749.09		811,749.09
Erin, Town of		1,785,957.92		1,785,957.92
Guelph-Eramosa Tp		464,299.34		464,299.34
Mapleton Tp		114,276.93		114,276.93
Minto, Town of		245,790.44		245,790.44
Puslinch Tp		3,524,854.47		3,524,854.47
Wellington North Tp		117,339.71		117,339.71
Sub-Total		7,064,267.90	0.00	7,064,267.90
York				
East Gwillimbury, Town of		136,801.72		136,801.72
Georgina, Town of		15,065.44		15,065.44
Whitchurch-Stouffville, Town of		1,119,946.34		1,119,946.34
Sub-Total		1,271,813.50	0.00	1,271,813.50
GRAND TOTAL		142,856,997.97	350,000.00	143,206,997.97

Table 3

**LICENCE AND WAYSIDE PRODUCTION
BY UPPER TIER MUNICIPALITY
(Million Tonnes)**

Municipality	2007	2008	2009	2010	2011	2012	2013	2014	2015	2016
Algoma, District of	2.8	2.9	2.6	2.9	2.9	2.6	2.4	2.7	2.9	2.8
Brant Co.	2.3	2.2	1.4	1.9	1.7	1.7	1.7	1.6	1.9	1.7
Bruce Co.	2.4	2.0	1.7	2.3	1.7	1.5	1.4	1.8	2.0	1.5
Chatham-Kent, R. M. of	0.3	0.2	0.3	0.3	0.4	0.2	0.3	0.2	0.2	0.3
Dufferin Co.	3.0	3.1	2.7	2.7	2.3	2.2	2.3	2.7	2.3	2.2
Durham, R. M. of	11.7	10.0	8.3	9.6	10.2	9.9	10.1	10.3	10.0	9.5
Elgin Co.	0.6	0.6	0.6	0.5	0.5	0.4	0.4	0.4	0.3	0.4
Essex Co.	1.7	1.6	1.7	2.6	2.0	2.0	2.1	1.6	1.9	1.9
Frontenac Co.	2.1	2.9	2.6	2.3	2.2	1.9	2.0	2.0	1.8	1.5
Greater Sudbury, City of	2.7	3.2	2.1	2.5	3.1	2.7	2.6	2.8	3.1	2.6
Grey Co.	3.2	3.3	2.9	3.5	3.0	2.6	2.8	3.2	4.1	3.7
Haldimand Co.	1.4	1.3	1.1	1.4	1.2	1.3	1.2	1.5	0.8	1.1
Haliburton Co.	0.5	0.6	0.5	0.5	0.5	0.4	0.4	0.5	0.4	0.4
Halton, R. M. of	9.5	8.5	6.9	7.2	8.7	7.4	6.8	7.7	7.2	6.6
Hamilton, City of	5.6	5.7	4.9	5.3	5.0	5.0	4.9	5.2	5.9	5.9
Hastings Co.	2.6	3.0	3.4	3.5	3.1	2.7	2.5	3.1	2.8	2.8
Huron Co.	2.9	2.9	3.0	2.5	2.8	2.5	2.7	3.7	3.1	3.1
Kawartha Lakes, City of	5.9	5.5	4.5	4.6	4.7	5.1	4.3	5.5	7.0	6.5
Lambton Co.	0.5	0.6	0.5	0.5	0.5	0.4	0.4	0.7	0.6	0.5
Lanark Co.	2.3	1.9	2.5	2.9	1.8	1.5	1.8	1.7	1.9	1.8
Leeds & Grenville Co.'s	2.0	2.3	2.1	2.6	2.0	2.1	1.9	2.2	1.9	2.0
Lennox & Addington Co.	2.0	2.0	2.0	2.4	2.2	2.2	1.8	2.0	2.4	2.0
Manitoulin, District of	3.6	3.9	2.9	3.6	3.2	2.5	2.2	2.8	2.9	3.0
Middlesex Co.	5.2	4.8	4.3	4.8	4.0	3.8	3.6	3.6	3.6	3.8
Muskoka	2.1	2.1	2.3	2.4	2.1	1.9	2.1	2.0	2.3	2.2
Niagara, R. M. of	4.0	4.0	3.9	4.6	3.9	4.7	4.6	4.3	5.0	5.1
Nipissing, District of	1.3	1.2	1.2	1.1	1.1	1.2	1.0	1.1	1.1	1.0
Norfolk Co.	0.5	0.5	0.4	0.5	0.5	0.8	1.0	0.8	0.6	0.7
Northumberland Co.	3.4	3.0	2.8	3.1	2.7	3.1	2.6	2.6	3.1	3.4
Ottawa, City of	11.4	11.2	11.0	12.7	10.9	10.6	9.6	10.0	9.7	8.7
Oxford Co.	7.1	5.8	4.9	5.2	4.9	5.6	5.8	6.3	5.8	6.4
Parry Sound, District of	1.5	1.8	2.4	3.5	2.1	1.5	1.2	1.4	1.2	1.5
Peel, R. M. of	4.7	3.8	3.6	3.9	3.6	3.9	3.6	4.0	3.5	2.6
Perth Co.	2.1	1.9	1.9	2.7	2.2	2.1	1.8	2.5	2.6	2.6
Peterborough Co.	2.9	3.2	3.2	3.3	3.2	2.6	2.6	2.7	3.1	3.1
Prescott & Russell Co.'s	1.4	1.7	1.7	1.6	1.6	1.5	1.3	1.5	1.5	1.4
Prince Edward Co.	2.4	2.4	1.6	1.7	1.6	1.6	1.3	1.5	1.3	1.6
Renfrew Co.	2.3	2.1	2.3	2.3	2.2	2.2	1.9	1.9	2.1	1.9
Simcoe Co.	12.0	12.1	10.5	10.3	10.7	10.5	10.1	11.4	13.4	11.4
Stormont, Dundas & Glengarry Co.'s	2.8	3.2	3.4	3.3	4.1	3.5	3.2	2.8	2.5	2.8
Sudbury, District of	1.7	1.1	0.8	0.8	0.9	1.0	0.8	0.9	0.9	0.6
Thunder Bay, District of	0.3	0.7	1.0	0.8	1.0	1.1	0.8	0.9	0.5	1.0
Waterloo, R. M. of	8.2	7.9	7.1	7.5	7.8	7.3	6.9	6.9	8.7	9.0
Wellington Co.	9.0	8.0	6.6	6.8	6.5	7.0	6.5	6.4	7.1	7.1
York, R. M. of	0.7	1.1	1.0	0.7	0.6	0.9	0.7	0.6	1.1	1.3
TOTAL	158.9	153.8	139.0	151.7	143.7	139.3	132.0	142.0	148.1	143.2

Note: Totals may not equal due to rounding.

Table 4

**LICENCE PRODUCTION IN 2016
THE TOP TEN PRODUCING MUNICIPALITIES
(Rounded to nearest million tonnes)**

Municipality(1)	County/Region	2016 Production	Production(2)				
			2015	2014	2013	2012	2011
1 City of Ottawa	City of Ottawa	8.7	9.7	10.0	9.6	10.6	10.9
2 City of Kawartha Lakes	City of Kawartha Lakes	6.5	7.0	5.5	4.3	5.1	4.7
3 City of Hamilton	City of Hamilton	5.9	5.9	5.2	4.9	5.0	5.0
4 Township of North Dumfries	Waterloo	5.5	5.4	4.2	4.1	4.4	4.5
5 Municipality of Clarington	Durham	5.5	5.8	5.5	5.3	5.1	5.0
6 City of Burlington/ Town Of Halton Hills (3)	Halton	5.3	2.4	2.2	2.1	3.1	3.8
7 Township of Zorra	Oxford	4.7	4.1	4.9	4.1	4.1	3.6
8 Township of Puslinch	Wellington	3.5	3.9	3.5	3.5	3.8	3.1
9 Severn Township	Simcoe	3.5	4.0	3.7	3.0	3.1	2.7
10 Township of Uxbridge	Wellington	2.8	3.0	3.6	3.7	3.6	3.9
Total		51.9	51.2	48.3	44.6	47.9	47.2

Notes:

1. Municipalities are ranked in order of their licenced production for 2016.
2. Historical data are for current year's Top Ten Producing Municipalities.
3. City of Burlington/Town Of Halton Hills combined due to lower tier grouping guidelines.

Table 5

**NUMBER AND TYPE OF AGGREGATE LICENCES
(Reported by MNR District)**

District	No. of Licences	Category		Type of Operation			
		Class A	Class B	Pit	Quarry	Pit & Quarry	Underwater
Aurora (GTA)	134	118	16	117	17	0	0
Aylmer	297	236	61	283	8	6	0
Bancroft	263	99	164	188	35	40	0
Guelph (Cambridge)	458	399	59	419	36	3	0
Kemptville	465	292	173	318	122	25	0
Midhurst	485	374	111	418	62	5	0
North Bay	140	61	79	106	8	26	0
Parry Sound	292	117	175	187	10	95	0
Pembroke	222	78	144	198	13	11	0
Peterborough (Tweed)	518	292	226	416	85	17	0
Sault Ste. Marie	100	57	43	80	7	13	0
Sudbury	224	128	96	158	20	46	0
Thunder Bay	96	52	44	72	7	17	0
Wawa	2	2	0	1	0	1	0
TOTAL	3,696	2,305	1,391	2,961	430	305	0

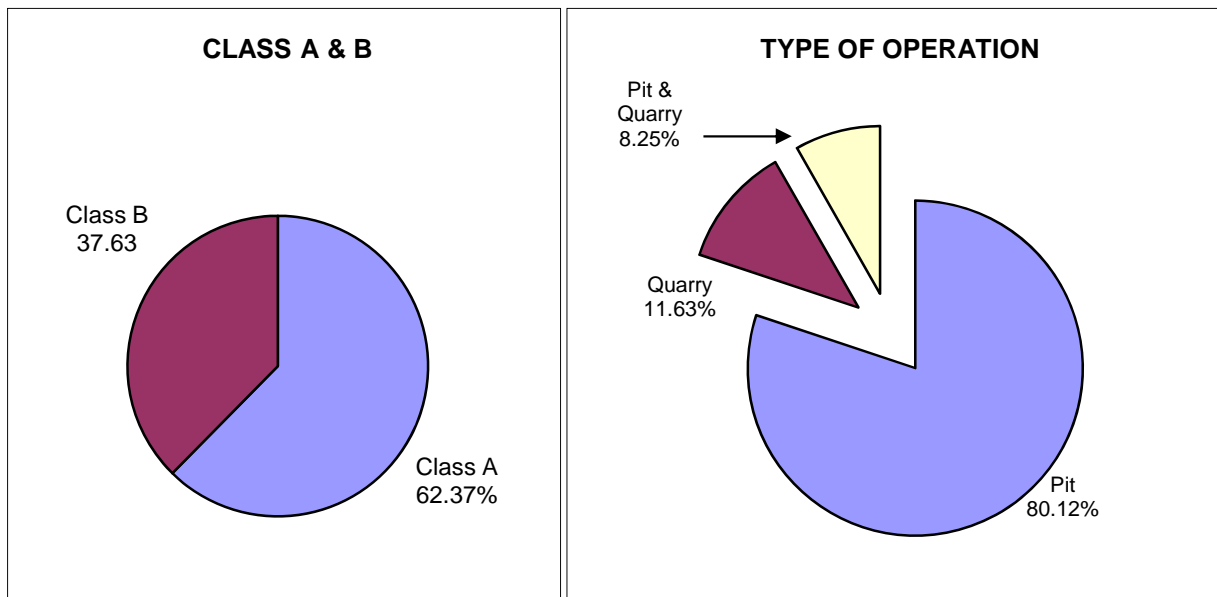
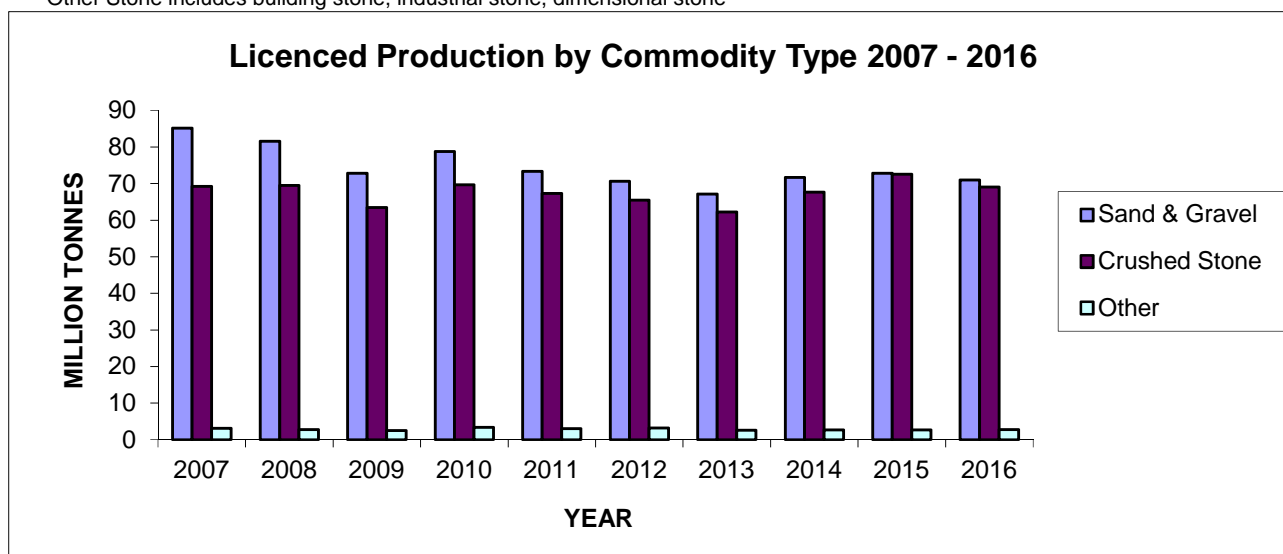


Table 6

**2016 LICENCED AGGREGATE PRODUCTION
BY COMMODITY TYPE
(Reported by MNR District)**

District	Total	Sand & Gravel	Crushed Stone	Clay/ Shale	Other Stone
Aurora (GTA)	19,837,418.04	9,388,125.62	9,480,641.00	675,866.35	292,785.07
Aylmer	14,025,469.17	10,323,684.68	3,631,503.14	9,107.83	61,173.52
Bancroft	5,094,486.61	603,670.42	4,346,408.20	0.00	144,407.99
Guelph (Cambridge)	35,624,592.27	22,676,546.26	12,872,359.70	74,307.00	1,379.31
Kemptville	16,639,882.22	2,926,866.31	12,624,360.71	1,012.80	1,087,642.40
Midhurst	18,746,961.66	10,509,295.72	8,055,912.70	6,316.87	175,436.37
North Bay	1,383,545.22	866,798.38	501,578.59	0.00	15,168.25
Parry Sound	3,259,127.40	1,249,689.41	1,986,943.73	76.55	22,417.71
Pembroke	1,950,056.94	1,442,249.19	501,762.22	4,272.38	1,773.15
Peterborough	16,329,923.87	6,631,417.20	9,557,783.89	110,169.97	30,552.81
Sault Ste. Marie	2,794,673.92	1,130,308.75	1,661,828.04	2,215.63	321.50
Sudbury	6,190,349.04	2,405,609.07	3,747,070.01	34,117.66	3,552.30
Thunder Bay	980,511.61	854,059.55	126,321.41	0.00	130.65
TOTAL	142,856,997.97	71,008,320.56	69,094,473.34	917,463.04	1,836,741.03

Note: Totals may not equal due to rounding - Reported in metric tonnes
Other Stone includes building stone, industrial stone, dimensional stone



**Yearly Production for Aggregate Licences
(in Million Tonnes)**

	Total	Sand & Gravel	Crushed Stone	Other
2007	157.56	85.17	69.24	3.15
2008	153.80	81.55	69.52	2.73
2009	138.84	72.79	63.51	2.54
2010	151.76	78.78	69.64	3.34
2011	143.73	73.36	67.34	3.03
2012	139.30	70.60	65.50	3.20
2013	131.97	67.13	62.23	2.61
2014	142.02	71.68	67.67	2.67
2015	148.06	72.83	72.55	2.68
2016	142.86	71.01	69.10	2.75

Table 7

**2016 AGGREGATE PERMIT PRODUCTION
BY COMMODITY TYPE
(Reported by MNR District)**

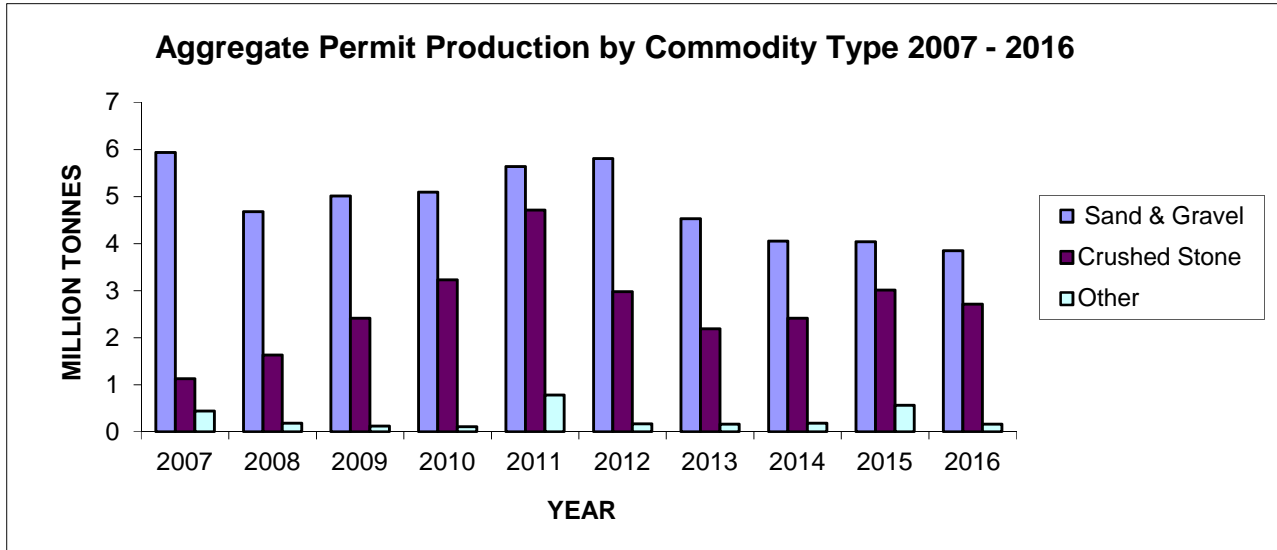
Region/District	Total Production	Sand & Gravel	Crushed Stone	Clay/Shale	Other Stone
NORTHEAST					
Chapleau	113,454.63	113,454.63	-	-	-
Cochrane	574,306.38	177,869.44	396,436.94	-	-
Hearst	487,539.04	176,396.44	310,224.60	-	918.00
Kirkland Lake	202,227.27	202,227.27	-	-	-
North Bay	255,240.95	133,710.30	121,439.00	-	91.65
Sault Ste. Marie	134,808.10	134,808.10	-	-	-
Sudbury	1,162,832.79	523,217.99	639,583.30	-	31.50
Timmins	192,162.54	175,345.54	-	16,817.00	-
Wawa	124,551.64	108,699.92	15,851.72	-	-
Sub-Total	3,247,123.34	1,745,729.63	1,483,535.56	16,817.00	1,041.15
NORTHWEST					
Dryden	551,756.25	334,244.25	216,255.00	-	1,257.00
Fort Frances	707,542.39	606,806.63	98,168.76	-	2,567.00
Kenora	268,995.48	83,688.69	170,945.42	-	14,361.37
Nipigon	410,085.78	301,606.42	107,146.56	-	1,332.80
Red Lake	149,164.26	148,439.93	724.33	-	-
Sioux Lookout	280,798.13	205,843.13	74,955.00	-	-
Thunder Bay	278,348.52	272,828.82	5,479.00	-	40.70
Sub-Total	2,646,690.81	1,953,457.87	673,674.07	-	19,558.87
SOUTHCENTRAL					
Algonquin Park	-	-	-	-	-
Aurora (GTA)	-	-	-	-	-
Aylmer	7,709.15	7,709.15	-	-	-
Bancroft	591,923.99	39,175.26	434,678.45	2,288.00	115,782.28
Guelph (Cambridge)	-	-	-	-	-
Kemptville	2,728.53	2,728.53	-	-	-
Midhurst	-	-	-	-	-
Parry Sound	57,874.33	25,903.09	31,374.24	-	597.00
Pembroke	77,010.20	77,010.20	-	-	-
Peterborough (Tweed)	91,043.95	-	91,043.95	-	-
Sub-Total	828,290.15	152,526.23	557,096.64	2,288.00	116,379.28
TOTAL	6,722,104.30	3,851,713.73	2,714,306.27	19,105.00	136,979.30

Note: Totals may not equal due to rounding - Reported in metric tonnes

Other Stone includes building stone, industrial stone, dimensional stone

Table 8

**2016 AGGREGATE PERMIT PRODUCTION
BY COMMODITY TYPE
(Reported By Year)**



**Yearly Production for Aggregate Permits
(in Million Tonnes)**

	Total	Sand & Gravel	Crushed Stone	Other
2007	7.51	5.94	1.13	0.44
2008	6.49	4.68	1.63	0.18
2009	7.54	5.01	2.41	0.12
2010	8.43	5.09	3.23	0.11
2011	11.13	5.64	4.71	0.78
2012	8.96	5.81	2.98	0.17
2013	6.88	4.53	2.19	0.16
2014	6.64	4.05	2.41	0.18
2015	7.61	4.04	3.01	0.56
2016	6.72	3.85	2.71	0.16

Table 9

**2016 AGGREGATE PERMIT PRODUCTION
BY COMMODITY TYPE
(Reported by CAC* Geographic Areas)**

Area	Total	Sand & Gravel	Crushed Stone	Clay/ Shale	Other Stone
Southwest (1)	7,709	7,709	0	0	0
Peninsula (2)	0	0	0	0	0
West Central (3)	0	0	0	0	0
GTA (4)	0	0	0	0	0
East Central (5)	695,613	51,223	525,722	2,288	116,379
East (6)	80,340	80,340	0	0	0
Northeast (7)	2,952,712	1,435,796	1,499,058	16,817	1,041
Northwest (8)	2,985,730	2,276,646	689,526	0	19,559
TOTAL	6,722,104	3,851,714	2,714,306	19,105	136,979

Note: Totals may not equal due to rounding - Reported in metric tonnes

Other Stone includes building stone, industrial stone, dimensional stone

*CAC - Cement Association of Canada formerly CPCA - Canadian Portland Cement Association

**2016 AGGREGATE LICENCE PRODUCTION
BY COMMODITY TYPE
(Reported by CAC* Geographic Areas)**

Area	Total	Sand & Gravel	Crushed Stone	Clay/ Shale	Other Stone
Southwest (1)	18,920,521	14,273,996	4,546,504	37,693	62,328
Peninsula (2)	14,565,186	2,845,340	11,673,899	45,722	225
West Central (3)	34,911,316	26,390,190	8,339,373	6,317	175,436
GTA (4)	19,840,768	9,390,626	9,480,641	675,866	293,635
East Central (5)	20,034,033	7,533,239	12,227,755	88,213	184,825
East (6)	22,136,958	4,874,763	16,136,143	27,318	1,098,733
Northeast (7)	8,672,030	3,715,458	4,901,349	34,118	21,106
Northwest (8)	3,776,186	1,984,708	1,788,809	2,216	452
TOTAL	142,856,998	71,008,321	69,094,473	917,463	1,836,741

Note: Totals may not equal due to rounding - Reported in metric tonnes

Other Stone includes building stone, industrial stone, dimensional stone

*CAC - Cement Association of Canada formerly CPCA - Canadian Portland Cement Association

Table 10

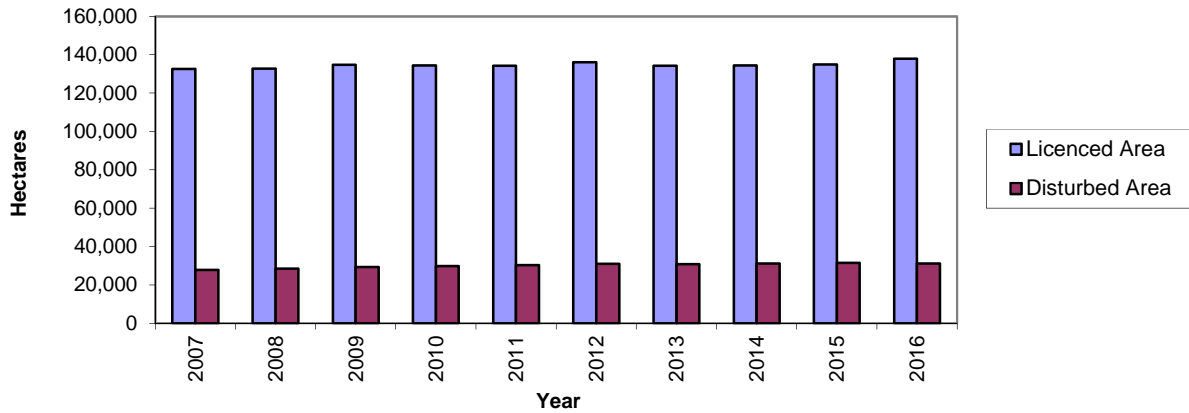
**REHABILITATION OF
LICENCED AGGREGATE SITES IN 2016
(Reported by MNR District)**

District	Total No. of Licences	Total Licenced Area	Original Disturbed Area	New Disturbed Area	New Rehab. Area	Total Disturbed Area
Aurora (GTA)	134	8,067.87	2,670.84	82.50	106.35	2,646.99
Aylmer	297	8,617.13	2,791.29	122.85	169.41	2,744.73
Bancroft	263	9,577.98	1,202.22	84.40	17.70	1,268.92
Guelph (Cambridge)	458	16,665.08	5,181.34	302.02	171.72	5,311.64
Kemptville	465	14,393.76	4,580.67	52.02	78.99	4,553.70
Midhurst	485	16,144.52	4,214.02	234.01	124.88	4,323.15
North Bay	140	6,689.98	786.20	17.97	0.03	804.14
Parry Sound	292	9,350.23	2,065.94	39.04	14.16	2,090.83
Pembroke	222	5,773.87	870.62	30.14	14.40	886.36
Peterborough (Tweed)	518	15,420.90	3,986.46	129.33	200.71	3,915.09
Sault Ste. Marie	100	4,045.59	769.01	45.50	68.27	746.24
Sudbury	224	16,156.50	1,651.36	30.59	27.27	1,654.68
Thunder Bay	96	6,990.92	346.78	271.20	39.81	578.18
Wawa	2	46.87	0.00	0.00	0.00	0.00
TOTAL	3,696	137,941.20	31,116.75	1,441.58	1,033.69	31,524.64

Note: Areas reported in hectares

These statistics are compiled from information supplied by licencees and are not independently checked for accuracy.

Total Licenced & Disturbed Area 2007 - 2016



New Rehabilitated & Disturbed Area 2007 - 2016

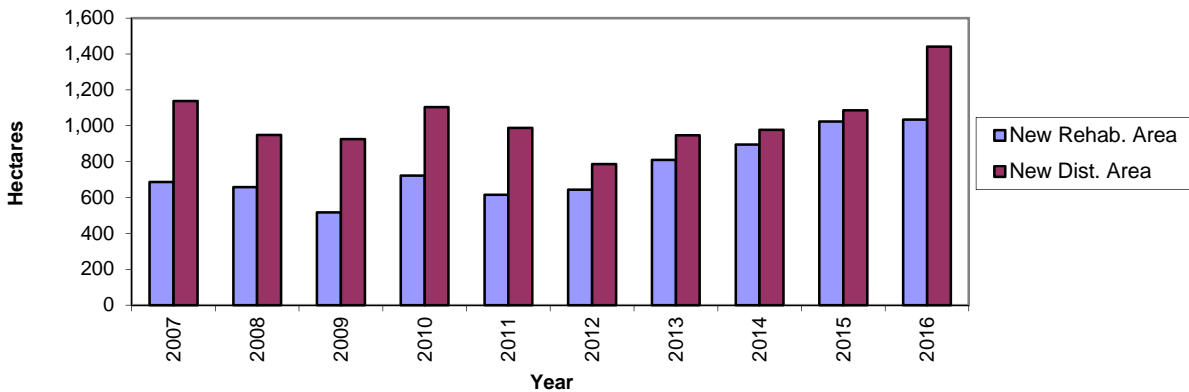
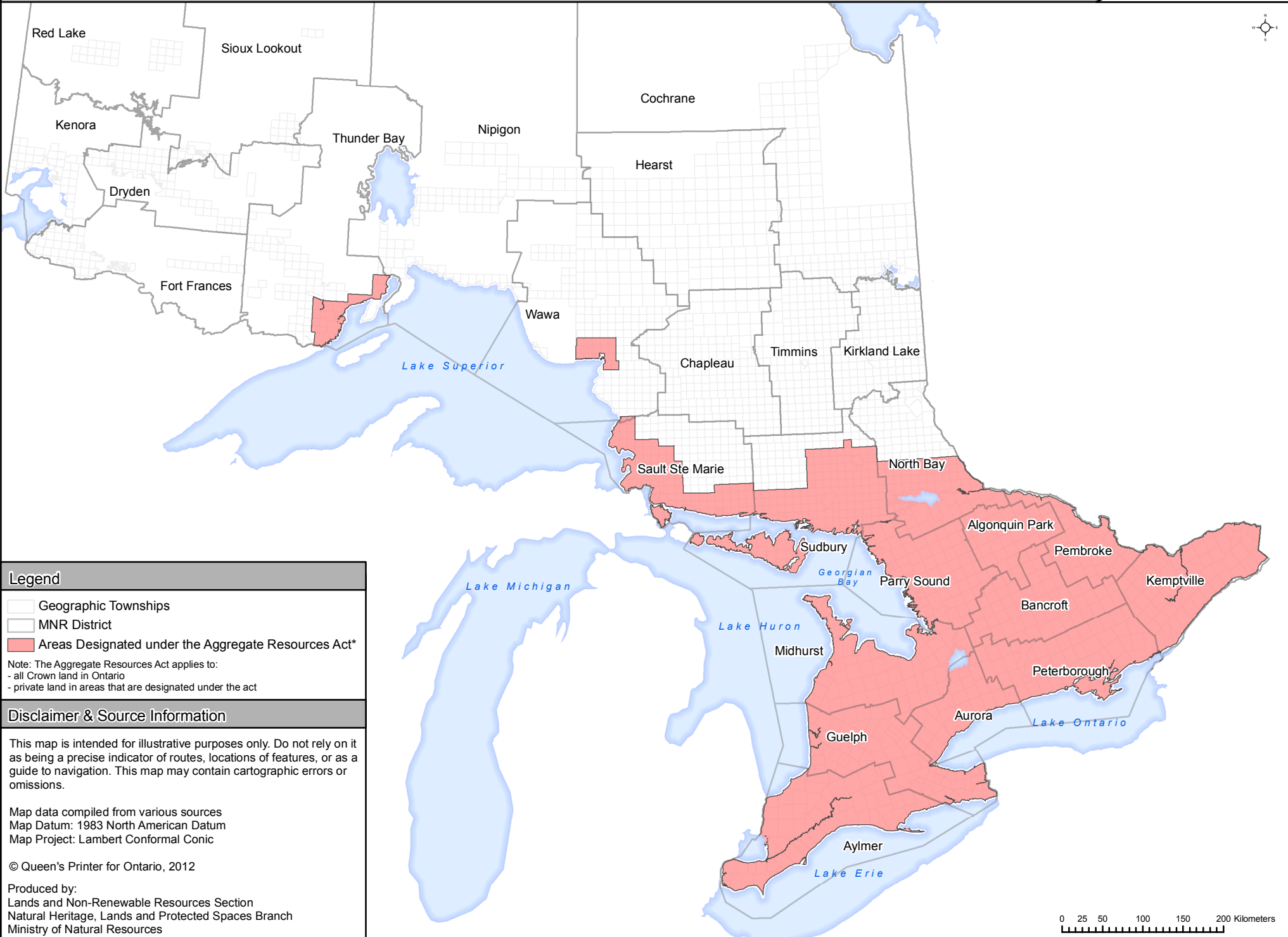


Table 11




**NUMBER AND TYPE OF AGGREGATE PERMITS
(Reported by MNR District)**

Region/District	Total Hectarage	Total No. of Permits	Pit	Quarry	Pit & Quarry	Underwater
NORTHEAST						
Chapleau	1,260.40	92	88	4	0	0
Cochrane	3,323.60	118	101	10	7	0
Hearst	3,865.82	189	162	25	2	0
Kirkland Lake	2,000.08	150	138	9	3	0
North Bay	3,206.63	193	152	31	10	0
Sault Ste. Marie	1,097.09	90	84	4	2	0
Sudbury	4,981.76	159	118	24	17	0
Timmins	2,175.71	142	127	9	6	0
Wawa	2,423.11	173	156	10	7	0
Sub-Total	24,334.20	1,306	1,126	126	54	0
NORTHWEST						
Dryden	2,453.66	173	168	9	11	0
Fort Frances	2,364.62	206	187	7	16	0
Kenora	3,034.21	175	133	25	19	0
Nipigon	3,523.26	217	186	17	19	0
Red Lake	1,258.68	69	65	5	2	0
Sioux Lookout	2,143.91	84	77	2	3	0
Thunder Bay	4,196.21	160	117	25	12	0
Sub-Total	18,974.55	1,084	933	90	82	0
SOUTHCENTRAL						
Aurora	4.90	1	1	0	0	0
Aylmer	0.10	1	0	0	0	1
Bancroft	1,383.80	69	53	16	0	0
Guelph (Cambridge)	620.00	1	0	0	0	1
Kemptville	2.00	1	1	0	0	0
Parry Sound	975.18	87	60	19	8	0
Pembroke	145.92	34	34	0	0	0
Peterborough (Tweed)	31.40	2	0	1	1	0
Sub-Total	3,163.30	196	149	36	9	2
TOTAL	46,472.05	2,586	2,208	252	145	2

Areas Designated under the Aggregate Resources Act



Legend

-  Geographic Townships
-  MNR District
-  Areas Designated under the Aggregate Resources Act*

Note: The Aggregate Resources Act applies to:
- all Crown land in Ontario
- private land in areas that are designated under the act

Disclaimer & Source Information

This map is intended for illustrative purposes only. Do not rely on it as being a precise indicator of routes, locations of features, or as a guide to navigation. This map may contain cartographic errors or omissions.

Map data compiled from various sources
Map Datum: 1983 North American Datum
Map Project: Lambert Conformal Conic

© Queen's Printer for Ontario, 2012

Produced by:
Lands and Non-Renewable Resources Section
Natural Heritage, Lands and Protected Spaces Branch
Ministry of Natural Resources

0 25 50 100 150 200 Kilometers



CANADIAN PORTLAND CEMENT ASSOCIATION* GEOGRAPHIC AREAS

* Now CAC - Cement Association of Canada



Area 1 Southwest	Area 2 Peninsula	Area 3 West Central	Area 4 GTA	Area 5 East Central	Area 6 East	Area 7 Northeast	Area 8 Northwest
Essex	Niagara	Bruce	Metro Toronto	Kawartha Lakes	Prescott & Russell	Nipissing	Algoma
Chatham-Kent	Brant	Grey	Peel	Peterborough	Leeds & Grenville	Parry Sound	Thunder Bay
Lambton	Haldimand	Simcoe	York	Haliburton	Stormont, Dundas, & Glengarry	Timiskaming	Kenora
Elgin	Norfolk	Dufferin	Durham	Northumberland	Frontenac	Cochrane	Rainy River
Middlesex	Hamilton	Wellington	Halton	Hastings	Greater Ottawa	Sudbury District	
Huron		Waterloo		Prince Edward	Lanark	Greater Sudbury	
Perth				Muskoka	Renfrew	Manitoulin	
Oxford					Lennox & Addington		



Ontario Ministry of Natural Resources and Forestry - Contact Information

Aggregate Inspectors/Officers

		<u>TELEPHONE</u>	<u>EXT</u>	<u>FAX</u>
Algonquin	Henry Checko	613-637-2780		613-637-2864
Aurora District	Emily Moore Kayla Stephenson	905-713-7396 905-713-7388		905-713-7361 905-713-7361
Aylmer District	Stephen Douglas Vacant	519-773-4716		519-773-9014
Bancroft District Haliburton Highlands Minden	Paul Shalla Jeff Schosser Scott Bird	613-332-3940 705-646-5526 705-286-5223	208	613-332-0608 705-646-8372 705-286-4355
Cochrane	Chris Waslyk	705-272-7194		705-272-7183
Chapleau	Andrew Orton	705-864-3153		705-864-0681
Dryden	Mike Durocher	807-223-7552		807-223-2825
Espanola/Manitoulin	Prabin Sharma	705-564-7863		705-564-7879
Fort Frances	Sonya Zuber	807-274-8609		807-274-4438
Guelph District	Diane Schwier Seana Richardson	519-826-4930 519-826-4927		519-826-4929 519-826-4929
Guelph District, Huron/Perth Office	Vacant			
Hearst	Veronique Felardeau	705-372-2222		705-272-7184
Kemptville District	Christopher Bierman Jennifer Tighe Olissia Stechishen	613-258-8264 613-258-8364 613-258-8207		613-258-3920 613-258-3920 613-258-3920
Kenora	Sonya Zuber	807-274-8609		807-274-4438
Kirkland Lake	Travis Brunet	705-235-1315		705-235-1377
Midhurst District Midhurst District, Owen Sound Office	Brent Armstrong Jason McLay	705-725-7532 519-371-8470		705-725-7584 519-372-3305
Nipigon	Herb Neubrand	807-887-5028		807-854-0335
North Bay	Remi Labreche	705-475-5531		705-475-5500
Parry Sound Bracebridge	Sid Larson Jeff Schosser	705-773-4233 705-646-5526		705-746-8828 705-646-8372
Pembroke District	Donald Lewis Shane Stewart	613-732-5516 613-732-5562		613-732-2972 613-732-2972
Peterborough District Peterborough District, Kingston Office	Pankaj Vaishnav Rose Copland Darren Bonnenberg Todd Baker	705-755-3109 705-755-3110 613-531-5735 613-531-5712		705-755-3125 705-755-3125 613-531-5730 613-531-5730
Red Lake	Mike Durocher	807-223-7552		807-223-2825
Sioux Lookout	Mike Durocher	807-223-7552		807-223-2825
Sudbury	Kendall Haddow	705-564-7855		705-564-7879
Sault Ste. Marie	Steve Acorn	705-941-5132		705-949-6450
Thunder Bay	Calinda Manning	807-475-1167		807-475-1527
Timmins	Travis Brunet	705-235-1315		705-235-1377
Wawa	Corey Young	705-856-4751		705-856-7511

Go to <http://www.toarc.com/permits-licenses/mnr-contacts.html> for the most current listing of MNR Inspectors.

APPENDIX A

GLOSSARY OF TERMS

For actual definitions, please refer to the Aggregate Resources Act.

Active Licence

A licence that has been issued, being transferred, or under suspension at the end of the calendar year.

Aggregate

Includes sand, gravel, limestone, dolostone, crushed stone, rock other than metallic ores, and other prescribed material.

Aggregate Permit

A permit for a pit or quarry issued under the Aggregate Resources Act allowing for the excavation of aggregate that is the property of the Crown, on land where the surface rights are the property of the Crown, or from land under water.

ALPS

The Aggregate Licence and Permit System (ALPS) is an automated data base that facilitates the management of mineral aggregate production and related information, for individual licences, aggregate permits and wayside permits across the province.

Building Dimension

A slab or block of rock, flagstone if foliated and dimension stone if massive, generally rectangular, and cut to specified measurements for ornamental surfacing in buildings or other construction applications.

Clay/Shale

Clay is a fine-grained, natural, earthy material composed primarily of hydrous aluminum silicates. It is plastic when moist and hardens when dried. Shale is fine-grained sedimentary laminated rock predominantly composed of clay grade and other fine minerals.

Class A Licence

A licence under the Aggregate Resources Act to allow excavation of more than 20,000 tonnes of aggregate annually from a pit or quarry within parts of Ontario that have been designated under the Aggregate Resources Act.

Class B Licence

A licence under the Aggregate Resources Act to allow excavation of 20,000 tonnes or less of aggregate annually from a pit or quarry within parts of Ontario that have been designated under the Aggregate Resources Act.

Crown Land

Ownership of land which is vested in the Crown or owned by the Province of Ontario.

Crushed Stone

Rock or stone mechanically crushed to specified sizes and grading.

Designated Area

An area of the Province identified by regulation under the Aggregate Resources Act where a person requires a licence for the excavation of aggregate from private land.

Disturbed Area

An area within a site that has been, or is being excavated to operate a pit or quarry, and has not been rehabilitated.

Gravel

Small stones and pebbles or a mixture of sand and small stones. More specifically, fragments of rock worn by the action of air and water, larger and coarser than sand. MTO specifications define gravel as unconsolidated granular material greater than 4.75mm.

Housing Starts

The number of housing units started where construction has advanced to 100 per cent of footings. In case of multiple dwellings, a "start" implies the commencement of individual structures.

Inactive Licence

A licence that has been revoked or surrendered prior to the end of the calendar year.

Licence

A licence for a pit or quarry issued under the Aggregate Resources Act allowing for the extraction of aggregate in designated areas.

Licensed Area

A specific area for which a licence has been issued for the extraction of mineral aggregates under the Aggregate Resources Act.

Pit

Land or land under water from which unconsolidated aggregate is being or has been excavated, and has not been rehabilitated.

Private Land

Land owned by an individual or corporation, as opposed to land which is owned by the Crown.

Progressive Rehabilitation

As per the requirements of the Aggregate Resources Act, sequential rehabilitation completed within reasonable time over disturbed land from which aggregate has been extracted. The rehabilitation is carried out according to the Act, the regulations, the site plan, and the conditions of the licence or permit during the period that aggregate is being extracted.

Pits & Quarries Control Act

An Act to manage and regulate mineral aggregate extraction in Ontario. The Act had been automatically repealed and replaced by the Aggregate Resources Act as of January 1, 1990.

Quarry

Land or land under water from which consolidated rock is or has been excavated and the site has not been rehabilitated.

Rehabilitation

To treat the land from which aggregate has been excavated to a pre-excitation condition or use, or to a condition compatible with adjacent land.

Royalty

A payment made to the Crown in recognition of the extraction of aggregates owned by the Crown. Under the Aggregate Resources Act, the royalty is set at a minimum of 50 cents per tonne. The Minister may set a higher rate or may allow exemption.

Sand

Any hard granular rock material finer than gravel and coarser than dust. MTO specifications define sand as granular material ranging in size from .075mm to 4.75 mm.

Wayside Permit

A permit issued to a public authority or a person who has a contract with a public authority for a temporary road project or an urgent project for which no alternative source of aggregate is available under licence or permit. A wayside permit expires 18 months from the date of issue or upon completion of the project, whichever comes first.

APPENDIX B

**HISTORICAL DESIGNATION OF PRIVATE LAND UNDER THE
PITS AND QUARRIES CONTROL ACT AND
THE AGGREGATE RESOURCES ACT**

(by Geographic Twp)

Designations under the Pits and Quarries Control Act (1971-1989)

DECEMBER 19, 1971

Adjala	Euphrasia	Nottawasaga
Albemarle	Flamborough East	Osprey
Albion	Flamborough West	Pelham
Amabel	Grantham	Reach
Ancaster	Grimsby North	Saltfleet
Artemesia	Holland	Stamford
Barton	Keppel	St. Edmunds
Beverly	Lindsay	St. Vincent
Caledon	London	Sydenham
Chinguacousy	Louth	Thorold
Clinton	Melancthon	Toronto Gore
Collingwood	Mono	Trafalgar
Derby	Mulmur	Westminster
Eastnor	Nassagaweya	West Nissouri
Erin	Nelson	Whitby
Esquesing	Niagara	Whitchurch

MARCH 3, 1972

Brock	Lobo	Pickering
East Whitby	Markham	Toronto
Gloucester	Nepean	Vaughan
Hallowell	Osgoode	

MAY 9, 1972

Brantford	Pittsburgh	South Dumfries
Guelph	Puslinch	Waterloo
Kingston	North Dumfries	

AUGUST 15, 1973

Anderdon	Dereham	Humberstone
Bertie	Dunn	Huntley
Blenheim	Eramosa	King
Brighton	Fitzroy	Malden
Clarke	Gosfield South	Manvers
Colchester North	Gosfield North	March
Colchester South	Haldimand	Mersea
Cramahe	Hamilton	Murray
Crowland	Harwich	Nichol
Darlington	Hope	North Cayuga

North Gower
North Oxford
Oneida
Orillia
Oro
Pilkington
Raleigh
Romney

Sidney
Sunnidale
Thurlow
Tilbury East
Tyendinaga
Uxbridge
Vespra
Walpole

Wellesley
West Oxford
Willoughby
Wilmot
Woodhouse
Woolwich
Yarmouth

FEBRUARY 15, 1974

Delaware
North Dorchester

MAY 17, 1974

Pelee

MAY 1, 1975

Alnwick
Amaranth
Arran
Arthur
Asphodel
Balfour
Bayham
Belmont
Bexley
Biddulph
Binbrook
Blandford
Blanshard
Blezard
Bowell
Broder
Burford
Caistor
Camden
Capreol
Cartwright
Cavan
Charlotteville
Chatham
Creighton
Cumberland
Denison
Dieppe
Dill
Douro
Dover
Dowling
Drury

Dryden
Dummer
East York
East Garafraxa
East Nissouri
East Luther
East Gwillimbury
East Oxford
East Zorra
Eldon
Emily
Ennismore
Essa
Etobicoke
Fairbank
Falconbridge
Fenelon
Flos
Gainsborough
Garson
Georgina
Glanford
Glenelg
Goulburn
Graham
Hanmer
Harvey
Houghton
Howard
Hutton
Innisfil
Levack
Lorne

Louise
Lumsden
MacLennan
Maidstone
Malahide
Mara
Mariposa
Marlborough
Maryborough
Matchedash
McKim
Medonte
Middleton
Minto
Morgan
Moulton
Neelon
Norman
North Monaghan
North Walsingham
North Norwich
North Gwillimbury
North York
Oakland
Onondaga
Ops
Orford
Otonabee
Peel
Percy
Proton
Rainham
Rama

Rawden
Rayside
Rochester
Sandwich, East
Sandwich, West
Scarborough
Scott
Scugog
Seneca
Seymour
Sherbrooke
Smith
Snider
South Walsingham

South Cayuga
South Dorchester
South Grimsby
South Norwich
South Monaghan
Sullivan
Tay
Tecumseh
Thorah
Tilbury, North
Tilbury, West
Tiny
Torbolton
Tosorontio

Townsend
Trill
Tuscarora
Verulam
Wainfleet
Waters
West Luther
West Garafraxa
West Gwillimbury
West Zorra
Windham
Wisner
York
Zone

APRIL 6, 1976

Great LaCloche Island
Little LaCloche Island

AUGUST 27, 1976

Avenge
Bosanquet
Carden

Korah
Parke
Prince

Rankin
St. Mary's
Tarentorus

JANUARY 1, 1981

Adelaide
Aldborough
All of the County of Perth
All of the County of Huron
All of the County of Lanark
Ameliasburgh
Athol
Bentinck
Brant
Brooke
Bruce
Carrick
City of Belleville
Culross
Dawn
Dunwich
E. Williams
Egremont
Elderslie
Elzevir and Grimsthorpe

Enniskillen
Euphemia
Exfrid
Greenock
Hillier
Hungerford
Huntingdon
Huron
Kincardine
Kinloss
Madoc
Marmora and Lake
McGillivray
Moore
Mosa
Normanby
North Marysburgh
Plympton
Sarnia
Saugeen

Separated Town of Trenton
Sombra
Sophiasburgh
South Marysburgh
Southwold
Town of Deseronto
Tudor
United Counties of Prescott
and Russell
United Counties of Stormont,
Dundas & Glengarry
United Counties of Leeds and
Grenville
Villages of Deloro, Frankford,
Madoc, Marmora, Stirling
and Tweed
W. Williams
Walford
Warwich
Wyoming

JULY 1, 1984

Storrington

Designations under the Aggregate Resources Act (Jan. 1, 1990)

APRIL 1, 1992

Adolphustown
Amherst Island
Bedford
Camden East
Dalton
Digby
Ernestown

Howe Island
Laxton
Longford
Loughborough
North Fredericksburgh
Portland
Richmond

Somerville
South Fredericksburgh
Town of Napanee
Villages of Bath and
Newburgh
Wolfe Island

SEPTEMBER 1, 1993

Admaston
Alice and Fraser
Bagot and Blithfield
Bromley
City of Pembroke
Horton

McNab
Pembroke
Petawawa
Ross
Stafford

Towns of Arnprior and
Renfrew
Villages of Beachburg,
Braeside, Cobden and
Petawawa
Westmeath

JANUARY 1, 1998

Anderson
Appleby
Archibald
Aweres
Awrey
Baldwin
Burwash
Cartier
Cascaden
Casimir
Chesley Additional
Cleland
Cosby
Curtin
Delamere
Dennis
Deroche
Duncan
Dunnet
Eden
Fenwick
Fisher
Foster
Foy

Gaudette
Gough
Hagar
Hallam
Harrow
Harty
Haviland
Hawley
Hendrie
Henry
Herrick
Hess
Hilton
Hodgins
Hoskin
Hyman
Jarvis
Jennings
Jocelyn
Johnson
Kars
Kehoe
Laird
Laura

Ley
Loughrin
Macdonald
May
McKinnon
Meredith and Aberdeen
Additional
Merritt
Mongowin
Nairn
Pennefather
Ratter
Secord
Servos
Shakespeare
Shields
St. Joseph
Street
Tarbutt and Tarbutt
Additional
Tilley
Tilton
Tupper
VanKoughnet

DECEMBER 4, 1999

Village of Hilton Beach

JULY 22, 2004

Andre
Bostwick
Franchere
Groseilliers
Legarde

Levesque
Macaskill
Menzies
Michipicoten
Musquash

Rabazo
St. Germain
Warpula

Newly Designated Private Lands (Effective January 1, 2007)

1. Those parts of the County of Frontenac consisting of the townships of Central Frontenac and North Frontenac.
2. Those parts of the County of Renfrew consisting of,
 - a) the Township of Bonnechere Valley, the Township of Brudenell, Lyndoch and Raglan, the Township of Head, Clara and Maria, the Township of Killaloe, Hagarty and Richards, the Township of Madawaska Valley and the Township of North Algona Wilberforce;
 - b) the Township of Greater Madawaska, except the townships of Bagot and Blythfield; and
 - c) the towns of Deep River and Laurentian Hills.
3. Those parts of the County of Lennox and Addington consisting of,
 - a) the Township of Addington Highlands; and
 - b) the Township of Stone Mills, except the Township of Camden East.
4. Those parts of the County of Hastings consisting of,
 - a) the Town of Bancroft;
 - b) the townships of Carlow/Mayo, Faraday, Limerick and Wollaston;
 - c) the Municipality of Hastings Highlands; and
 - d) the Township of Tudor and Cashel, except the Township of Tudor.
5. Those parts of the County of Peterborough consisting of,
 - a) the Township of Galway-Cavendish-Harvey, except the Township of Harvey;
 - b) the Township of Havelock-Belmont-Methuen, except the Township of Belmont and the Town of Havelock; and
 - c) the Township of North Kawartha.
6. All of the County of Haliburton.
7. Those parts of the Territorial District of Nipissing consisting of,
 - a) the Town of Mattawa;
 - b) the City of North Bay;
 - c) the Municipality of West Nipissing;
 - d) the townships of Bonfield, Calvin, Chisholm, East Ferris, Mattawan, Papineau- Cameron and South Algonquin; and
 - e) the geographical townships of Airy, Anglin, Antoine, Ballantyne, Barron, Biggar, Bishop, Blyth, Boulter, Bower, Boyd, Bronson, Butler, Butt, Canisbay, Charlton, Clancy, Clarkson, Commanda, Deacon, Devine, Dickson, Eddy, Edgar, Finlayson, Fitzgerald, French, Freswick, Garrow, Gladman, Guthrie, Hammell, Hunter, Jocko, Lauder, Lyman, Lister, Lockhart, Master, McCraney, McLaughlin, McLaren, Merrick, Mulock, Niven, Notman, Olig, Osborne, Osler, Paxton, Peck, Pentland, Phelps, Poitras, Preston, Sproule, Stewart, Stratton, Thistle, White and Wilkes

8. All parts of the Territorial District of Parry Sound consisting of,
 - a) the townships of Armour, Carling, Joly, Machar, McKellar, McMurrich/Monteith, Nipissing, Perry, Ryerson, Seguin, Strong and The Archipelago;
 - b) the municipalities of Powassan, Magnetawan, McDougall, Callander and Whitestone;
 - c) the towns of Kearney and Parry Sound;
 - d) the villages of Burk's Falls, South River and Sundridge; and
 - e) the geographical townships of Bethune, Blair, Brown, East Mills, Gurd, Hardy, Harrison, Henvey, Laurier, Lount, McConkey, Mowat, Patterson, Pringle, Proudfoot, Shawanaga, Wallbridge and Wilson.

9. All parts of the Territorial District of Muskoka consisting of,
 - a) the towns of Bracebridge, Gravenhurst and Huntsville;
 - b) the townships of Georgian Bay, Lake of Bays and Muskoka Lakes; and
 - c) the District Municipality of Muskoka.

10. Those parts of the Territorial District of Sudbury consisting of,
 - a) the Municipality of French River, except the geographical townships of Cosby, Delamere and Hoskin;
 - b) the Township of Sables – Spanish River, except the geographical townships of Gough, Hallam, Harrow, May, McKinnon and Shakespeare;
 - c) the Town of Killarney;
 - d) the Municipality of Killarney;
 - e) those parts of the City of Greater Sudbury consisting of the geographical townships of Aylmer, Fraleck, Hutton, MacKelcan, Parkin, Rathburn and Scadding; and
 - f) the geographical townships of Bevin, Caen, Carlyle, Cox, Davis, Dunlop, Halifax, Humboldt, Janes, Kelly, Leinster, McCarthy, Munster, Porter, Roosevelt, Shibananing, Truman, Tyrone and Waldie.

11. All parts of the Territorial District of Manitoulin, except Great LaCloche Island and Little LaCloche Island.

12. Those parts of the Territorial District of Algoma consisting of,
 - a) the towns of Blind River, Bruce Mines and Thessalon;
 - b) the City of Elliot Lake;
 - c) the townships of The North Shore, Plummer Additional and Shedden;
 - d) the Municipality of Huron Shores; and
 - e) the geographical townships of Aberdeen, Boon, Bridgland, Brule, Cadeau, Curtis, Dablon, Daumont, Deagle, Gaiashk, Galbraith, Gerow, Gillmor, Grenoble, Hughes, Hurlburt, Hynes, Kane, Kincaid, Lamming, Laverendrye, Marne, McMahan, Montgomery, Morin, Nicolet, Norberg, Palmer, Parkinson, Patton, Peever, Plummer, Rix, Rose, Ryan, Slater, Smilsky, Wells, Whitman and Wishart.

13. Those parts of the Territorial District of Thunder Bay consisting of,
 - a) the City of Thunder Bay;
 - b) the Municipality of Neebing; and
 - c) the townships of Conmee, Dorion, Gillies, O'Conner, Oliver Paipoonge and Shuniah.

Please refer to the Revised Regulations of Ontario for accuracy.